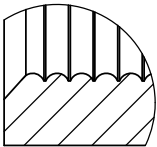
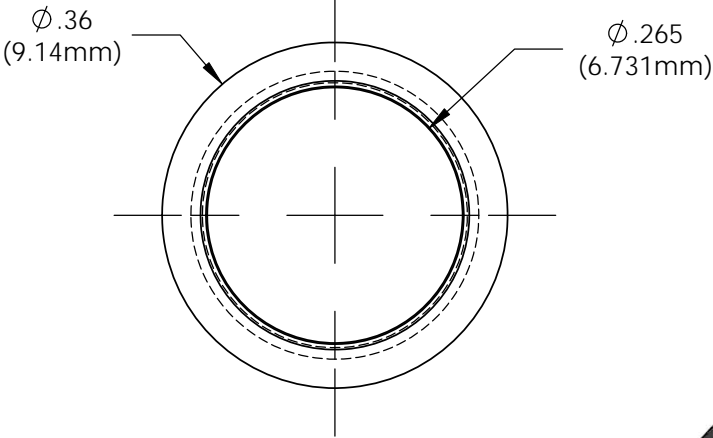
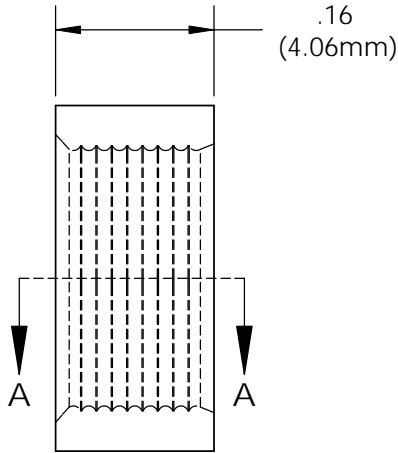


NOTES:

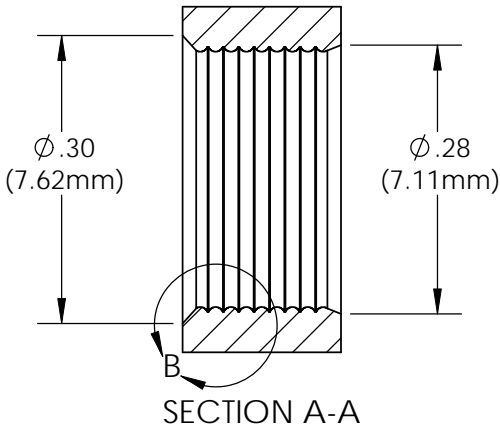
1. U.S. & Foreign Pat. Issued & Pend.

REVISIONS

| ECN # | REV | DESCRIPTION | DATE | INITIALS |
|-------|-----|---------------------------|----------|----------|
| | 1 | VARIOUS | 7/94 | JS |
| | 2 | WAS .275 IS .272 | 9/26/02 | JS |
| | 3 | WAS .272 IS .265 | 10/17/02 | JS |
| | 001 | REVISED PER ECR111009AZ01 | 2/11/10 | KH |
| 145 | 002 | CHANGE IN MATERIAL | 7/12/10 | KH |



DETAIL B
SCALE 8 : 1

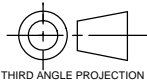


ISOMETRIC VIEW
4:1

UNLESS OTHERWISE SPECIFIED
DIMENSIONS ARE IN INCHES:

ANGLES DECIMALS
± 1' .X ±.020
 .XX ±.010
FINISH .XXX ±.005

BREAK ALL CORNERS AND SHARP
EDGES .030 MAX



THIRD ANGLE PROJECTION

PROPRIETARY AND CONFIDENTIAL
THE INFORMATION CONTAINED IN THIS
DRAWING IS THE SOLE PROPERTY OF
VISUAL COMMUNICATIONS COMPANY, INC.
ANY REPRODUCTION IN PART OR AS A
WHOLE WITHOUT THE WRITTEN PERMISSION
OF VISUAL COMMUNICATIONS COMPANY, INC.
IS PROHIBITED.

MATERIAL

POLYPROPYLENE,
BLACK

FINISH

SEE NOTES

APPROVALS

DATE

DRAWN K.Howard

2/11/10

CHECKED DPZ

2/22/10

DO NOT SCALE DRAWING

VISUAL COMMUNICATIONS COMPANY

190 Bosstick Boulevard, Suite 101 San Marcos, CA 92069 USA
Phone (760) 560-1300 Fax (760) 560-1301 email vcsales@vccite.com

TITLE:

CLIPMOUNT RING RNG 268

SIZE

A

DWG. NO.

RNG 268

REV

002

SCALE: 5:1

SHEET 1 OF 1