
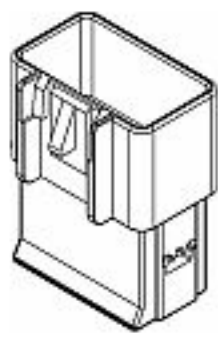


SEARCH KEYWORD, PART NUMBER 



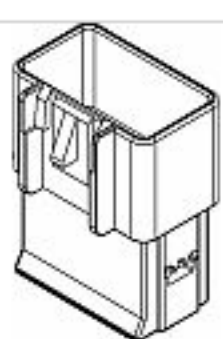
Part Number: 15332166

Product Name: [GT 150 Series](#)

12 Way M GT 150 Unsealed

 [Share](#)  [Print](#) [Contact Us About This Item](#)

GET SAMPLES 

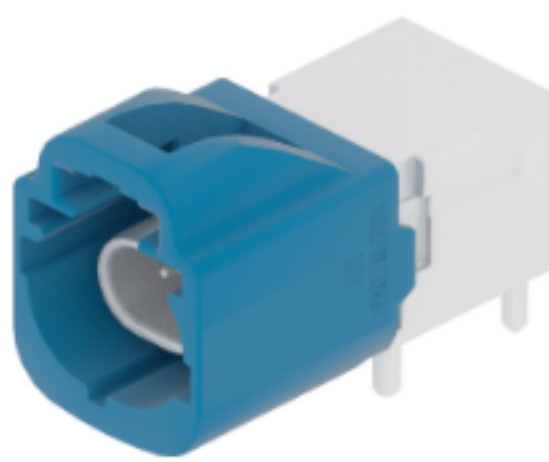
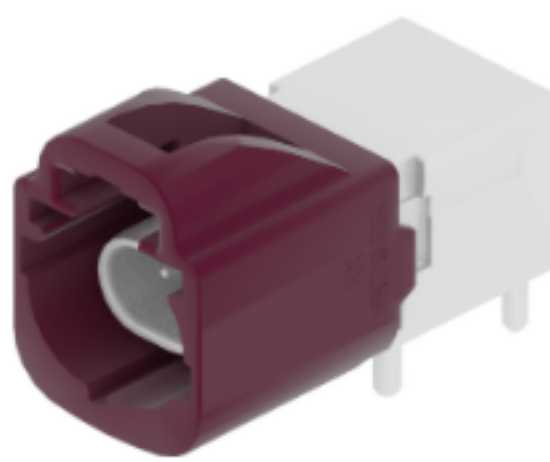
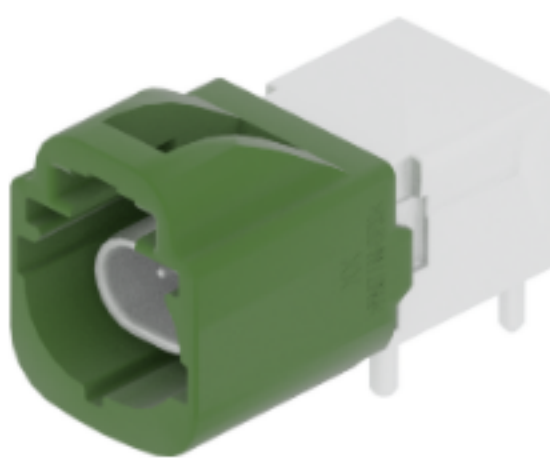


ATTRIBUTES DOCUMENTS ECAD COMPATIBLE PARTS

Attributes

Product Family	GT	Height (mm)	22.5
Product Series	150 Series	Color	BLACK
Max. operating temperature	+125°C	Primary Locking Mechanism	LOCKING LANCE
Min. operating temperature	-40°C	Weight (g)	11.0712
No. of Ways	12	Terminal 1 Size	1.5
Cable Exit Orientation	180°	Sealing	Unsealed
Gender	Male	Primary Material	PA 6 GB 20 + GF 10
Length (mm)	36.1	Coding/Index	112
Width (mm)	28.6		

Other Products



RESOURCE-CENTER-ITEM
COV CONN CLIP CDT BLACK

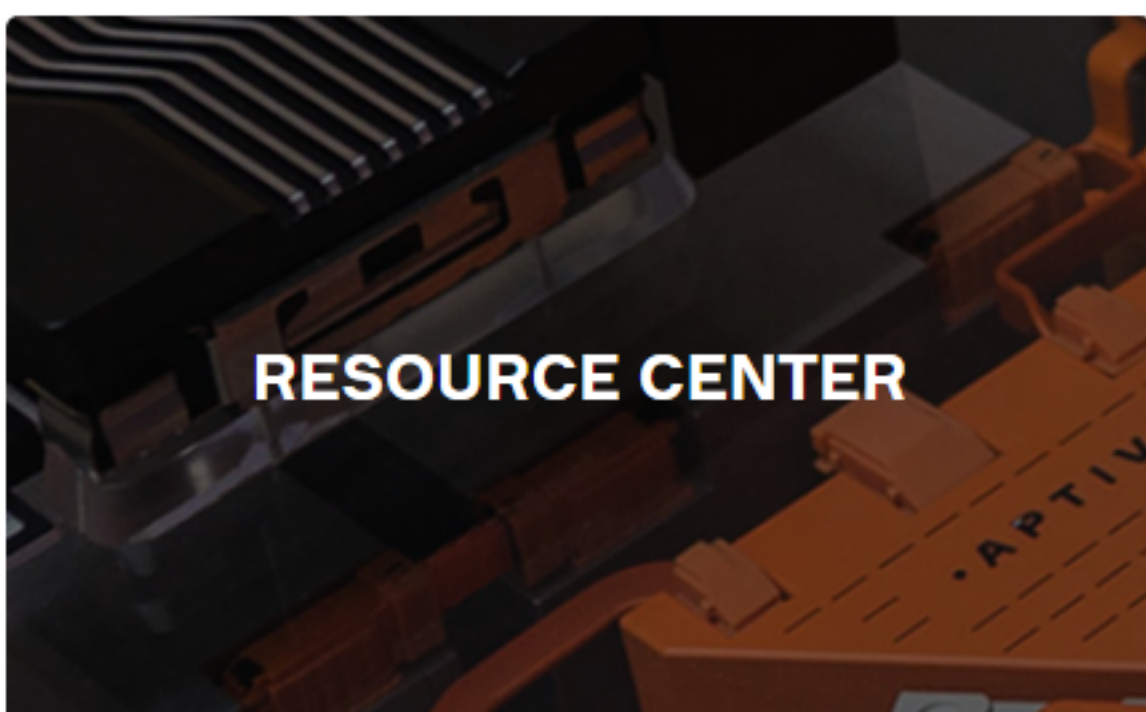
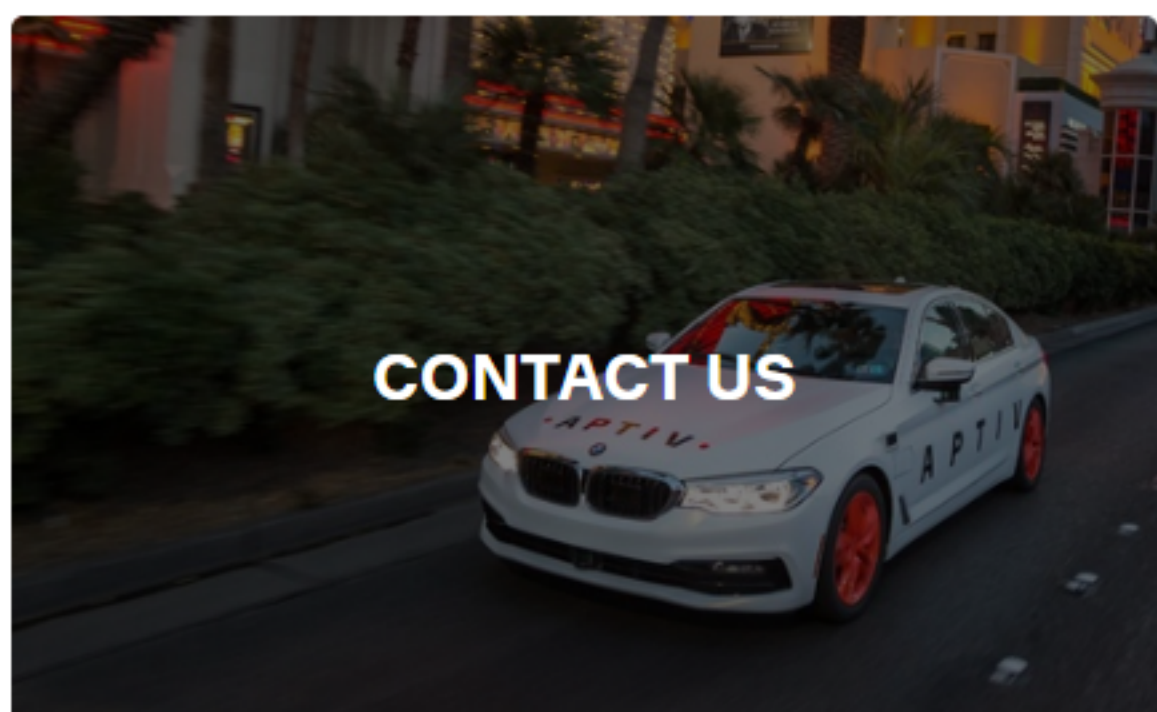
35829171
2 Way Male 0.5 Unsealed Green

35829170
2 Way Male 0.5 Unsealed Violet

35829169
2 Way Male 0.5 Unsealed Blue



Next Steps



Keep pace with where mobility is going.

See what's next and get the latest updates.

SIGN UP TO GET UPDATES 

Don't worry. We won't flood your inbox or share your email.

INSIGHTS

EXPLORE ALL ARTICLES
CASE STUDIES
MOBILITY INSIDER
RESEARCH PUBLICATIONS
WHITE PAPERS

SOLUTIONS

Advanced Safety
Connected Services
Connection Systems
Connectivity and Security
Electrical Distribution Systems
Middleware & DevOps
Smart Vehicle Architecture
User Experience
Vehicle Electrification Systems
HellermannTyton
Intercable Automotive Solutions
Motional
Winchester Interconnect
Wind River

CATALOG

ABOUT

Our Mission
Our Businesses
Our Locations
Our Foundation
Sustainability
Suppliers

PRIVACY

Terms of Use
Cookie Policy

LEGAL & COMPLIANCE

CAREERS

INVESTORS
NEWSROOM
CONTACT