

6

5

4

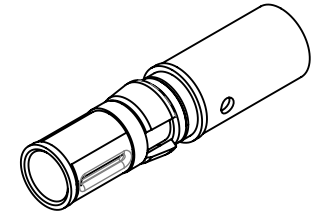
3

2

1

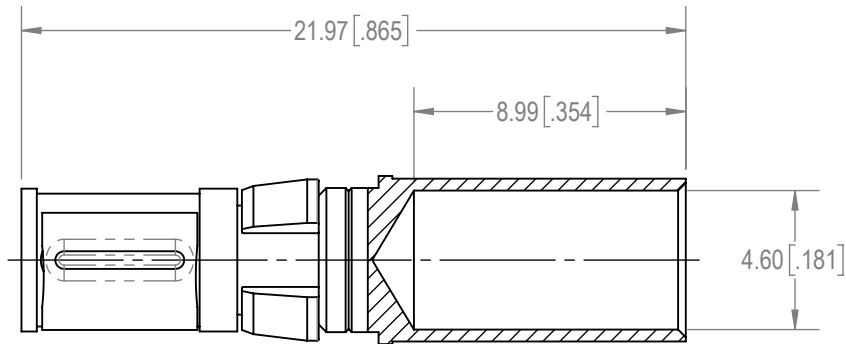
D

D



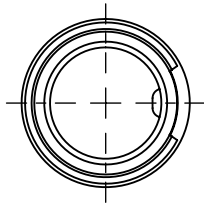
C

C



B

B



A

A

NOTES:



1. MATERIAL AND FINISHES:

CONTACT: PRECISION MACHINED COPPER ALLOY, 1.27 μ [.000050] GOLD OVER COPPER PLATE.SPRING CLIP: BERYLLIUM COPPER, 1.27 μ [.000050] GOLD OVER COPPER PLATE.

PLASTIC RETAINER: POLYETHERIMIDE.

2. COMPONENT SHOULD BE FREE FROM SCRATCHES AND DAMAGES.

3. DETAILED PRODUCT, MECHANICAL AND ELECTRICAL INFORMATION IS AVAILABLE IN THE LATEST HIGH PERFORMANCE D-SUB PRODUCT PUBLICATION AT CONNECTPOSITRONIC.COM.4. CRIMPING TOOL INFORMATION IS AVAILABLE AT WWW.CONNECTPOSITRONIC.COM/CrimpToolCrosslist.

BY	GJ	CHK	EB	3RD ANGLE	POSITRONIC BELIEVES THE DATA ON THE DRAWING TO BE RELIABLE. THE USER EMPLOYS SUCH INFORMATION AT HIS OWN DISCRETION AND RISK. POSITRONIC ASSUMES NO RESPONSIBILITY FOR RESULTS OBTAINED OR DAMAGES INCURRED FROM USE OF SUCH INFORMATION IN WHOLE OR IN PART.	 Positronic [®] CONNECTPOSITRONIC.COM
APR	PA	RELEASED DATE: 2020-04-03				
TOLERANCES				SCALE	FC4008M	SERIES SCBD/SCBM
$\pm 0.03\text{mm}$ [.001 INCHES] FOR MALE CONTACT MATING DIAMETERS $\pm 0.08\text{mm}$ [.003 INCHES] FOR CONTACT TERMINATION DIAMETERS $\pm 0.13\text{mm}$ [.005 INCHES] FOR ALL OTHER DIAMETERS $\pm 0.38\text{mm}$ [.015 INCHES] FOR ALL OTHER DIMENSIONS $\pm 5^\circ$ FOR ALL ANGLES DIMENSION ARE IN MILLIMETERS [INCHES]				NTS		
PART NUMBER				TITLE		
2020-03-14				SHEET	SHEET 1 OF 1	
				REV	A	

6

5

4

3

2

1