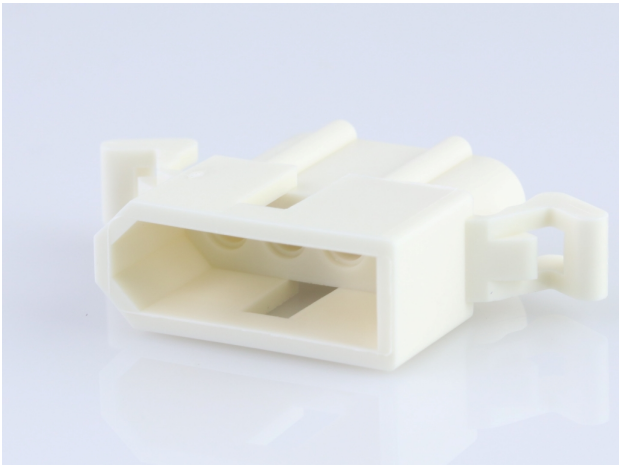




Part Number : [469990353](#)
Product Description : 1.57mm Diameter
Standard .062" Pin and Socket Plug Housing, 4
Circuits, with Pre-bent Mounting Ears,
Natural, Glow-Wire Capable
Series Number : 1625
Status : Active
Product Category : Connector Housings
Engineering Number : 1625-4P2-1



Documents & Resources


Drawings
[469990353_sd.pdf](#)

3D Models and Design Files
[469990353_stp.zip](#)

Specifications
[PK-1625-003-001.pdf](#)
[PS-02-06-001.pdf](#)

Product Environment Compliance

Compliance

GADSL/IMDS	Not Relevant
China RoHS	
EU ELV	Not Relevant
Low-Halogen Status	Not Low-Halogen per IEC 61249-2-21
REACH SVHC	Not Contained per D(2024)7663-DC (21 Jan 2025)
EU RoHS	Compliant per EU 2015/863

Multiple Part Product Compliance Statements
- Eu RoHS
- REACH SVHC

- Low-Halogen

Multiple Part Industry Compliance Documents

- IPC 1752A Class C

- IPC 1752A Class D

- Molex Product Compliance Declaration

- IEC-62474

- chemSHERPA (xml)

EU RoHS Certificate of Compliance

Part Details

General

Status	Active
Category	Connector Housings
Series	1625
Description	1.57mm Diameter Standard .062" Pin and Socket Plug Housing, 4 Circuits, with Pre-bent Mounting Ears, Natural, Glow-Wire Capable
Application	Power, Wire-to-Wire
Product Name	Standard .062"
UPC	191128082037

Agency

CSA	LR19980
UL	E29179

Physical

Circuits Detail	1x4
Circuits (maximum)	4
Color - Resin	Natural
Flammability	94V-2
Gender	Plug
Glow-Wire Capable	Yes
Keying to Mating Part	None
Lock to Mating Part	Yes
Material - Resin	Nylon

Net Weight	1.173/g
Number of Rows	1
Packaging Type	Bag
Panel Mount	Yes
Pitch - Mating Interface	3.68mm
Pitch - Termination Interface	3.68mm
Polarized to Mating Part	Yes
Stackable	No
Temperature Range - Operating	-40° to +105°C

Solder Process Data

Lead-Free Process Capability	N/A
------------------------------	-----

Use with Part(s)

Description	Part Number
Standard .062" Pin and Socket Female Crimp Terminals	<u>1561</u>
Standard .062" Pin and Socket Female Crimp Terminals	<u>1855</u>
Standard .062" Pin and Socket Male Crimp Terminals	<u>1560</u>
Standard .062" Pin and Socket Male Crimp Terminals	<u>1854</u>
Standard .062" Pin and Socket Male PC Tail Terminals	<u>1778</u>
Standard .062" Pin and Socket Female PC Tail Terminals	<u>1779</u>

This document was generated on Apr 22, 2025