

74LCXZ162244

Low Voltage 16-Bit Buffer/Line Driver with 5V Tolerant Inputs/Outputs and 26Ω Series Resistors in the Outputs

General Description

The LCXZ162244 contains sixteen non-inverting buffers with 3-STATE outputs designed to be employed as a memory and address driver, clock driver, or bus oriented transmitter/receiver. The device is nibble controlled. Each nibble has separate 3-STATE control inputs which can be shorted together for full 16-bit operation.

When V_{CC} is between 0 and 1.5V, the LCXZ162244 is in the high impedance state during power up or power down. this places the outputs in the high impedance (Z) state preventing intermittent low impedance loading or glitching in bus oriented applications.

The LCXZ162244 is designed for low voltage (2.7V or 3.3V) V_{CC} applications with capability of interfacing to a 5V signal environment.

In addition the outputs include 26Ω (nominal) series resistors to reduce overshoot and undershoot and are designed to sink/source 12 mA at $V_{CC} = 3.0V$.

The LCXZ162244 is fabricated with an advanced CMOS technology to achieve high speed operation while maintaining CMOS low power dissipation.

Features

- 5V tolerant inputs and outputs
- Guaranteed power up/down high impedance
- Supports live insertion/withdrawal
- Outputs have equivalent 26Ω series resistors
- 2.7V–3.6V V_{CC} specifications provided
- 5.3 ns t_{PD} max ($V_{CC} = 3.0V$), 20 μA I_{CC} max
- ± 12 mA output drive ($V_{CC} = 3.0V$)
- Implements patented noise/EMI reduction circuitry
- Latch-up performance exceeds 500 mA
- ESD performance:
 - Human body model > 2000V
 - Machine model > 200V

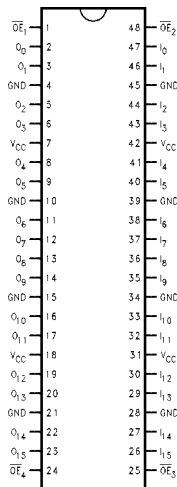
Ordering Code:

| Order Number | Package Number | Package Description |
|-----------------------------|----------------|---|
| 74LCXZ162244MEA | MS48A | 48-Lead Small Shrink Outline Package (SSOP), JEDEC MO-118, 0.300" Wide [TUBES] |
| 74LCXZ162244MEX (Note 1) | MS48A | 48-Lead Small Shrink Outline Package (SSOP), JEDEC MO-118, 0.300" Wide [TAPE and REEL] |
| 74LCXZ162244MTD | MTD48 | 48-Lead Thin Shrink Small Outline Package (TSSOP), JEDEC MO-153, 6.1mm Wide [TUBES] |
| 74LCXZ162244MTX (Note 1) | MTD48 | 48-Lead Thin Shrink Small Outline Package (TSSOP), JEDEC MO-153, 6.1mm Wide [TAPE and REEL] |

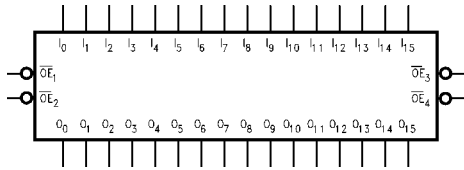
Note 1: Use this Order Number to receive devices in Tape and Reel.

74LCXZ162244 Low Voltage 16-Bit Buffer/Line Driver with 5V Tolerant Inputs/Outputs and 26Ω Series Resistors in the Outputs

Connection Diagram



Logic Symbol



Pin Descriptions

| Pin Names | Description |
|-------------------|----------------------------------|
| \overline{OE}_n | Output Enable Input (Active LOW) |
| I_0-I_{15} | Inputs |
| O_0-O_{15} | Outputs |

Truth Tables

| Inputs | | Outputs |
|-------------------|-----------|-----------|
| \overline{OE}_1 | I_0-I_3 | O_0-O_3 |
| L | L | L |
| L | H | H |
| H | X | Z |

| Inputs | | Outputs |
|-------------------|--------------|--------------|
| \overline{OE}_3 | I_8-I_{11} | O_8-O_{11} |
| L | L | L |
| L | H | H |
| H | X | Z |

| Inputs | | Outputs |
|-------------------|-----------|-----------|
| \overline{OE}_2 | I_4-I_7 | O_4-O_7 |
| L | L | L |
| L | H | H |
| H | X | Z |

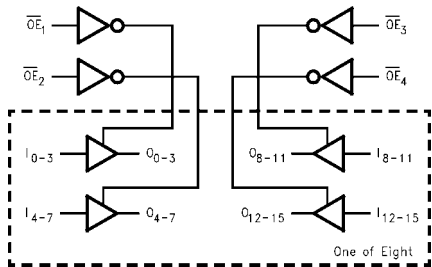
| Inputs | | Outputs |
|-------------------|-----------------|-----------------|
| \overline{OE}_4 | $I_{12}-I_{15}$ | $O_{12}-O_{15}$ |
| L | L | L |
| L | H | H |
| H | X | Z |

H = HIGH Voltage Level
L = LOW Voltage Level
X = Immaterial
Z = High Impedance

Functional Description

The LCXZ162244 contains sixteen non-inverting buffers with 3-STATE standard outputs. The device is nibble (4 bits) controlled with each nibble functioning identically, but independent of the other. The control pins can be shorted together to obtain full 16-bit operation. The 3-STATE outputs are controlled by an Output Enable (\overline{OE}_n) input for each nibble. When \overline{OE}_n is LOW, the outputs are in 2-state mode. When \overline{OE}_n is HIGH, the outputs are in the high impedance mode, but this does not interfere with entering new data into the inputs.

Logic Diagram



| Absolute Maximum Ratings ^(Note 2) | | | | |
|--|----------------------------------|---|---|-------|
| Symbol | Parameter | Value | Conditions | Units |
| V _{CC} | Supply Voltage | −0.5 to +7.0 | | V |
| V _I | DC Input Voltage | −0.5 to +7.0 | | V |
| V _O | DC Output Voltage | −0.5 to +7.0 −0.5 to V _{CC} + 0.5 | Output in 3-STATE or V _{CC} = 0–1.5V Output in HIGH or LOW State (Note 3) | V |
| I _{IK} | DC Input Diode Current | −50 | V _I < GND | mA |
| I _{OK} | DC Output Diode Current | −50 +50 | V _O < GND V _O > V _{CC} | mA |
| I _O | DC Output Source/Sink Current | ±50 | | mA |
| I _{CC} | DC Supply Current per Supply Pin | ±100 | | mA |
| I _{GND} | DC Ground Current per Ground Pin | ±100 | | mA |
| T _{STG} | Storage Temperature | −65 to +150 | | °C |

Recommended Operating Conditions (Note 4)

| Symbol | Parameter | Min | Max | Units | |
|----------------------------------|--|--|--------|------------------------|----|
| V _{CC} | Supply Voltage | Operating | 2.7 | 3.6 | V |
| V _I | Input Voltage | 0 | 5.5 | V | |
| V _O | Output Voltage | HIGH or LOW State 3-STATE | 0 0 | V _{CC} 5.5 | V |
| I _{OH} /I _{OL} | Output Current | V _{CC} = 3.0V – 3.6V V _{CC} = 2.7V – 3.0V | | ±12 ±8 | mA |
| T _A | Free-Air Operating Temperature | −40 | 85 | °C | |
| Δt/ΔV | Input Edge Rate, V _{IN} = 0.8V–2.0V, V _{CC} = 3.0V | 0 | 10 | ns/V | |

Note 2: The Absolute Maximum Ratings are those values beyond which the safety of the device cannot be guaranteed. The device should not be operated at these limits. The parametric values defined in the Electrical Characteristics tables are not guaranteed at the Absolute Maximum Ratings. The “Recommended Operating Conditions” table will define the conditions for actual device operation.

Note 3: I_O Absolute Maximum Rating must be observed.

Note 4: Unused inputs must be held HIGH or LOW. They may not float.

DC Electrical Characteristics

| Symbol | Parameter | Conditions | V _{CC} (V) | T _A = −40°C to +85°C | | Units |
|--------------------|---|---|------------------------|---------------------------------|------|-------|
| | | | | Min | Max | |
| V _{IH} | HIGH Level Input Voltage | | 2.7 – 3.6 | 2.0 | | V |
| V _{IL} | LOW Level Input Voltage | | 2.7 – 3.6 | | 0.8 | V |
| V _{OH} | HIGH Level Output Voltage | I _{OH} = −100 μA | 2.7 – 3.6 | V _{CC} − 0.2 | | V |
| | | I _{OH} = −4 mA | 2.7 | 2.2 | | |
| | | I _{OH} = −6 mA | 3.0 | 2.4 | | |
| | | I _{OH} = −8 mA | 2.7 | | | |
| | | I _{OH} = −12 mA | 3.0 | 2.0 | | |
| V _{OL} | LOW Level Output Voltage | I _{OL} = 100 μA | 2.7 – 3.6 | | 0.2 | V |
| | | I _{OL} = 4 mA | 2.7 | | 0.4 | |
| | | I _{OL} = 6 mA | 3.0 | | 0.55 | |
| | | I _{OL} = 8 mA | 2.7 | | 0.6 | |
| | | I _{OL} = 12 mA | 3.0 | | 0.8 | |
| I _I | Input Leakage Current | 0 ≤ V _I ≤ 5.5V | 2.7 – 3.6 | | ±5.0 | μA |
| I _{OZ} | 3-STATE Output Leakage | 0 ≤ V _O ≤ 5.5V V _I = V _{IH} or V _{IL} | 2.7 – 3.6 | | ±5.0 | μA |
| I _{OFF} | Power-Off Leakage Current | V _I or V _O = 5.5V | 0 | | 10 | μA |
| I _{PU/PD} | Power Up/Down 3-STATE Output Current | V _O = 0.5V to V _{CC} V _I = GND or V _{CC} | 0 – 1.5 | | ±5.0 | μA |
| I _{CC} | Quiescent Supply Current | V _I = V _{CC} or GND | 2.7 – 3.6 | | 225 | μA |
| | | 3.6V ≤ V _I , V _O ≤ 5.5V (Note 5) | 2.7 – 3.6 | | ±225 | |
| ΔI _{CC} | Increase in I _{CC} per Input | V _{IH} = V _{CC} − 0.6V | 2.7 – 3.6 | | 500 | μA |

DC Electrical Characteristics (Continued)

Note 5: Outputs disabled or 3-STATE only.

AC Electrical Characteristics

| Symbol | Parameter | T _A = -40°C to +85°C, R _L = 500 Ω | | | | Units |
|-------------------|--------------------------------|---|-----|------------------------|-----|-------|
| | | V _{CC} = 3.3V ± 0.3V | | V _{CC} = 2.7V | | |
| | | C _L = 50 pF | | C _L = 50 pF | | |
| | | Min | Max | Min | Max | |
| t _{PHL} | Propagation Delay | 1.0 | 5.3 | 1.0 | 6.0 | ns |
| t _{PLH} | Data to Output | 1.0 | 5.3 | 1.0 | 6.0 | |
| t _{PZL} | Output Enable Time | 1.0 | 6.3 | 1.0 | 7.1 | ns |
| t _{PZH} | | 1.0 | 6.3 | 1.0 | 7.1 | |
| t _{PLZ} | Output Disable Time | 1.0 | 5.4 | 1.0 | 5.7 | ns |
| t _{PHZ} | | 1.0 | 5.4 | 1.0 | 5.7 | |
| t _{OSHL} | Output to Output Skew (Note 6) | | 1.0 | | | ns |
| t _{OSLH} | | | 1.0 | | | |

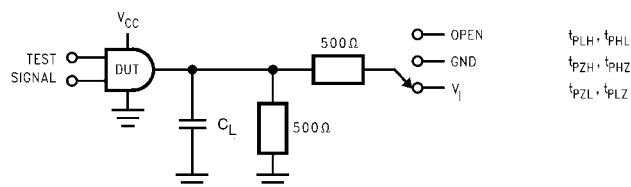
Note 6: Skew is defined as the absolute value of the difference between the actual propagation delay for any two separate outputs of the same device. The specification applies to any outputs switching in the same direction, either HIGH-to-LOW (t_{OSHL}) or LOW-to-HIGH (t_{OSLH}). Parameter guaranteed by design.

Dynamic Switching Characteristics

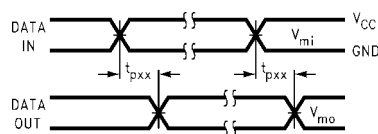
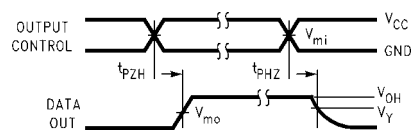
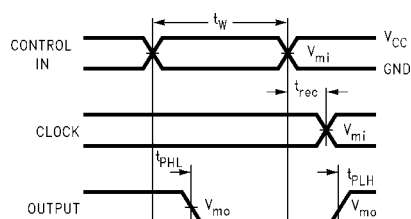
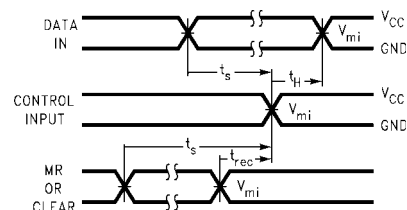
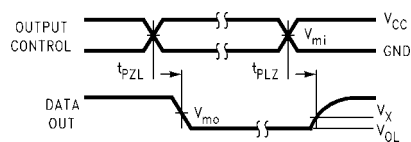
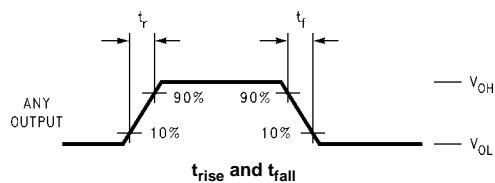
| Symbol | Parameter | Conditions | V_{CC} (V) | $T_A = 25^\circ\text{C}$ | Units |
|-----------|--------------------------------------|---|-----------------|--------------------------|-------|
| | | | | Typical | |
| V_{OLP} | Quiet Output Dynamic Peak V_{OL} | $C_L = 50\ \text{pF}, V_{IH} = 3.3V, V_{IL} = 0V$ | 3.3 | 0.8 | V |
| V_{OLV} | Quiet Output Dynamic Valley V_{OL} | $C_L = 50\ \text{pF}, V_{IH} = 3.3V, V_{IL} = 0V$ | 3.3 | -0.8 | V |

Capacitance

| Symbol | Parameter | Conditions | Typical | Units |
|-----------|-------------------------------|--|---------|-------|
| C_{IN} | Input Capacitance | $V_{CC} = \text{Open}, V_I = 0V \text{ or } V_{CC}$ | 7 | pF |
| C_{OUT} | Output Capacitance | $V_{CC} = 3.3V, V_I = 0V \text{ or } V_{CC}$ | 8 | pF |
| C_{PD} | Power Dissipation Capacitance | $V_{CC} = 3.3V, V_I = 0V \text{ or } V_{CC}, f = 10\ \text{MHz}$ | 20 | pF |

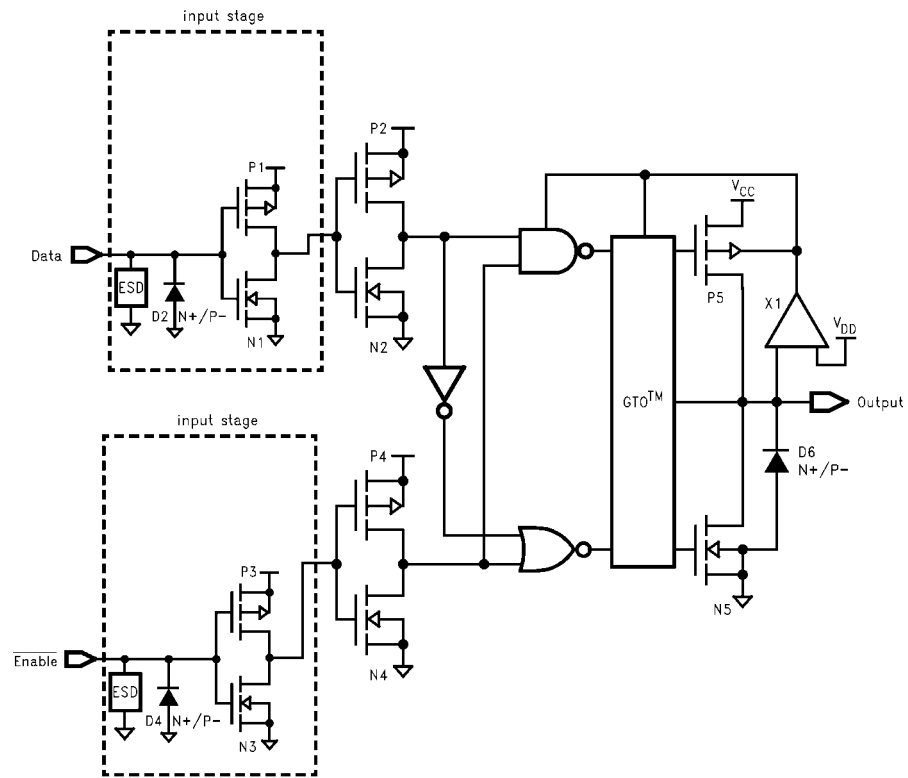
AC LOADING and WAVEFORMS Generic for LCX Family**FIGURE 1. AC Test Circuit (C_L includes probe and jig capacitance)**

| V_I | C_L |
|----------------------------------|-------|
| 6V for $V_{CC} = 3.3V, 2.7V$ | 50 pF |
| $V_{CC} * 2$ for $V_{CC} = 2.5V$ | 30 pF |

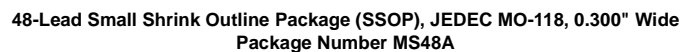
**Waveform for Inverting and Non-Inverting Functions****3-STATE Output High Enable and Disable Times for Logic****Propagation Delay, Pulse Width and t_{rec} Waveforms****Setup Time, Hold Time and Recovery Time for Logic****3-STATE Output Low Enable and Disable Times for Logic****FIGURE 2. Waveforms**
(Input Characteristics; $f = 1MHz$, $t_R = t_F = 3ns$)

| Symbol | V_{CC} | |
|----------|-----------------|-----------------|
| | 3.3V \pm 0.3V | 2.7V |
| V_{mi} | 1.5V | 1.5V |
| V_{mo} | 1.5V | 1.5V |
| V_X | $V_{OL} + 0.3V$ | $V_{OL} + 0.3V$ |
| V_Y | $V_{OH} - 0.3V$ | $V_{OH} - 0.3V$ |

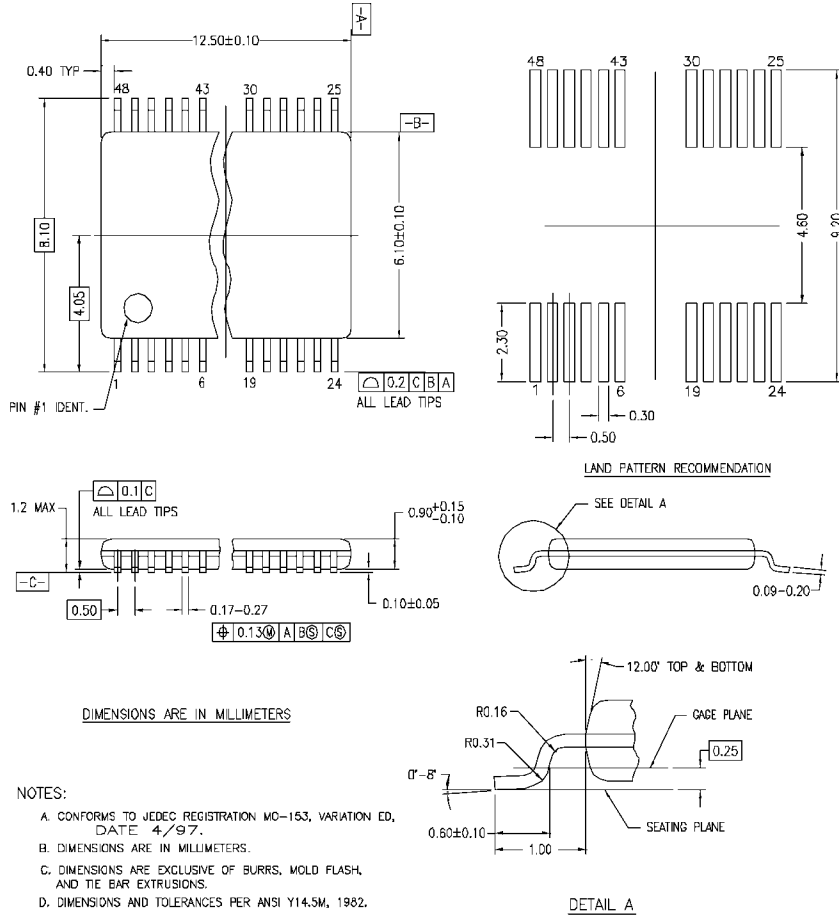
Schematic Diagram Generic for LCX Family



Physical Dimensions inches (millimeters) unless otherwise noted



Physical Dimensions inches (millimeters) unless otherwise noted (Continued)



MTD48REV C

48-Lead Thin Shrink Small Outline Package (TSSOP), JEDEC MO-153, 6.1mm Wide Package Number MTD48

Fairchild does not assume any responsibility for use of any circuitry described, no circuit patent licenses are implied and Fairchild reserves the right at any time without notice to change said circuitry and specifications.

LIFE SUPPORT POLICY

FAIRCHILD'S PRODUCTS ARE NOT AUTHORIZED FOR USE AS CRITICAL COMPONENTS IN LIFE SUPPORT DEVICES OR SYSTEMS WITHOUT THE EXPRESS WRITTEN APPROVAL OF THE PRESIDENT OF FAIRCHILD SEMICONDUCTOR CORPORATION. As used herein:

1. Life support devices or systems are devices or systems which, (a) are intended for surgical implant into the body, or (b) support or sustain life, and (c) whose failure to perform when properly used in accordance with instructions for use provided in the labeling, can be reasonably expected to result in a significant injury to the user.
2. A critical component in any component of a life support device or system whose failure to perform can be reasonably expected to cause the failure of the life support device or system, or to affect its safety or effectiveness.

www.fairchildsemi.com