



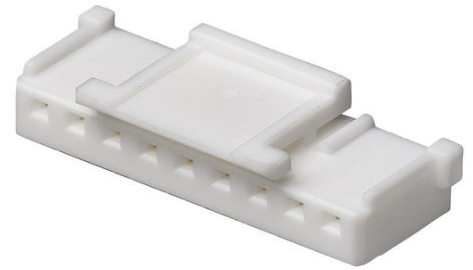
**Part Number :** [355070700](#)

**Product Description :** 2.00mm Pitch Sherlock Wire-to-Board Housing, Natural, 7 Circuits

**Series Number :** 35507

**Status :** Not Recommended For New Design

**Product Category :** Connector Housings



---

## Documents and Resources

### Drawings

[355070700\\_sd.pdf](#)

[355070700\\_stp.zip](#)

### Specifications

[355070200-100.pdf](#)

[PK-35507-001-001.pdf](#)


[PS-35507-001-001.pdf](#)

[PS-35507-003-001.pdf](#)

---

## Product Environment Compliance

### Compliance

GADSL/IMDS	Not Relevant
China RoHS	 per SJ/T 11365-2006
EU ELV	Compliant per 2000/53/EC
Low-Halogen Status	Not Low-Halogen per IEC 61249-2-21
REACH SVHC	Not Contained per D(2025)6375-DC (05 Nov 2025) SCIP:
EU RoHS	Compliant per EU 2015/863

### Compliance Statements

- EU RoHS
- REACH SVHC
- Low-Halogen

## Industry Documents

- IPC 1752A Class C
- IPC 1752A Class D
- Molex Product Compliance Declaration
- IEC-62474
- chemSHERPA (xml)

## Substances of Interest

- PFAS

## EU RoHS Certificate of Compliance

## Additional Product Compliance Information

---

## Part Details

### General

Status	Not Recommended For New Design
Category	Connector Housings
Series	35507
Description	2.00mm Pitch Sherlock Wire-to-Board Housing, Natural, 7 Circuits
Application	Signal, Wire-to-Board
Product Name	Sherlock
UPC	800753877641

### Agency

CSA	LR19980
UL	E29179

### Physical

Circuits Detail	7
Circuits (maximum)	7
Color - Resin	Natural
Flammability	94V-0
Gender	Receptacle
Glow-Wire Capable	No
Keying to Mating Part	None
Lock to Mating Part	Yes

Material - Resin	Polyester
Net Weight	0.300/g
Number of Rows	1
Packaging Type	Bag
Panel Mount	No
Pitch - Mating Interface	2.00mm
Polarized to Mating Part	Yes
Stackable	No
Temperature Range - Operating	-40° to +105°C

---

## Mates With / Use With

### Mates with Part(s)

Description	Part Number
Sherlock Vertical Headers	<a href="#">35362</a>
Sherlock Right-Angle Headers	<a href="#">35363</a>

### Use with Part(s)

Description	Part Number
Micro-Latch Female Crimp Terminals	<a href="#">50212</a>

---

This document was generated on Dec 31, 2025