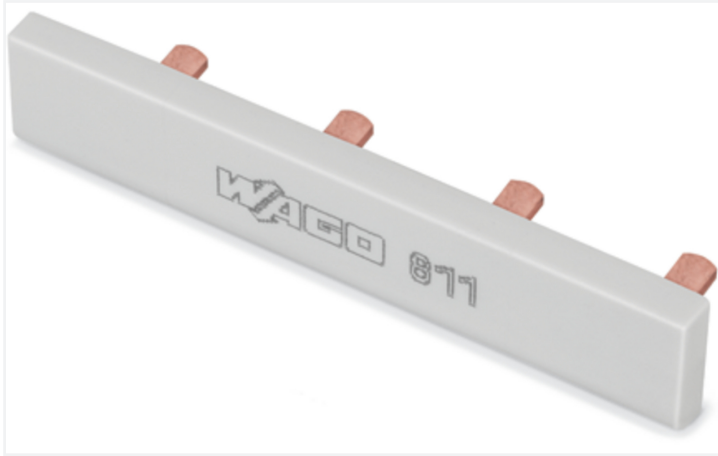


Data Sheet | Item Number: 811-472

Jumper; 2-way; insulated; light gray

<https://www.wago.com/811-472>



Color: ■ light gray

Similar to illustration

Electrical data

Ratings per IEC/EN

| | |
|-------------------------|--------|
| Nominal voltage (III/3) | 1000 V |
| Rated current | 63 A |

Material data

| | |
|----------------------|--|
| Note (material data) | Information on material specifications can be found here |
| Color | light gray |
| Weight | 10 g |

Commercial data

| | |
|-----------------------|---------------|
| PU (SPU) | 50 (10) pcs |
| Packaging type | Box |
| Country of origin | DE |
| GTIN | 4050821838548 |
| Customs tariff number | 85366990990 |

Product Classification

| | |
|-------------|----------------------|
| UNSPSC | 39121421 |
| eCl@ss 10.0 | 27-14-11-33 |
| eCl@ss 9.0 | 27-14-11-40 |
| ETIM 9.0 | EC000489 |
| ETIM 10.0 | EC000489 |
| ECCN | NO US CLASSIFICATION |

Environmental Product Compliance

| | |
|------------------------|-------------------------|
| RoHS Compliance Status | Compliant, No Exemption |
|------------------------|-------------------------|

Downloads

Environmental Product Compliance

| | |
|--|-------------------|
| Compliance Search | |
| Environmental Product Compliance 811-472 | ↓ |

Documentation

| | | | |
|-----------------|------------|-----------------|-------------------|
| Bid Text | | | |
| 811-472 | 19.02.2019 | xml 2.52 KB | ↓ |
| 811-472 | 14.03.2017 | doc 23.00 KB | ↓ |

CAD/CAE-Data

| | |
|----------------------|-------------------|
| CAD data | |
| 2D/3D Models 811-472 | ↓ |

| | |
|---------------------------|-------------------|
| CAE data | |
| EPLAN Data Portal 811-472 | ↓ |
| WSCAD Universe 811-472 | ↓ |
| ZUKEN Portal 811-472 | ↓ |

Installation Notes

Commoning



Jumper bar for quick and convenient commoning

Subject to changes. Please also observe the further product documentation!

Current addresses can be found at: www.wago.com