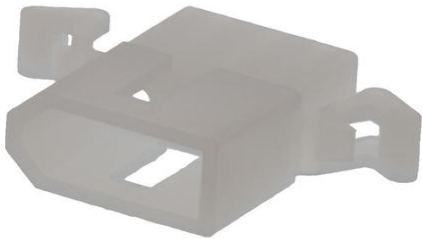




Part Number : [03062033](#)
Product Description : 1.57mm Diameter
Standard .062" Pin and Socket Plug Housing, 3 Circuits,
with Pre-bent Mounting Ears, Natural
Series Number : 1625
Status : Active
Product Category : Connector Housings
Engineering Number : 1625-3P4



Documents & Resources

Drawings

[003062033 sd.pdf](#)

3D Models and Design Files

[STEP AP242](#)

[SOLIDWORKS](#)

[Creo](#)


Specifications

[PK-1625-003-001.pdf](#)

[PS-02-06-001.pdf](#)

Product Environment Compliance

Compliance

GADSL/IMDS	Not Relevant
China RoHS	 per SJ/T 11365-2006
EU ELV	Not Relevant
Low-Halogen Status	Low-Halogen per IEC 61249-2-21
REACH SVHC	Not Contained per D(2025)4165-DC (25 June 2025)
EU RoHS	Compliant per EU 2015/863

[Compliance Statements](#)

- EU RoHS

- REACH SVHC
- Low-Halogen

Industry Documents

- IPC 1752A Class C
- IPC 1752A Class D
- Molex Product Compliance Declaration
- IEC-62474
- chemSHERPA (xml)

Substances of Interest

- PFAS

EU RoHS Certificate of Compliance

Additional Product Compliance Information

Part Details

General

Status	Active
Category	Connector Housings
Series	1625
Description	1.57mm Diameter Standard .062" Pin and Socket Plug Housing, 3 Circuits, with Pre-bent Mounting Ears, Natural
Application	Power, Wire-to-Wire
Comments	Polarized to Mating Part
Product Name	Standard .062"
UPC	800754231435

Agency

CSA	LR19980
UL	E29179

Physical

Breakaway	No
Circuits Detail	1x3
Circuits (maximum)	3
Color - Resin	Natural
Flammability	94V-2

Gender	Plug
Glow-Wire Capable	No
Keying to Mating Part	None
Lock to Mating Part	Yes
Material - Resin	Nylon
Net Weight	1.061/g
Number of Rows	1
Packaging Type	Bag
Panel Mount	Yes
Pitch - Mating Interface	3.68mm
Pitch - Termination Interface	3.68mm
Polarized to Mating Part	Yes
Stackable	No
Temperature Range - Operating	-40° to +105°C

Mates With / Use With

Mates with Part(s)

Description	Part Number
1.57mm Diameter Standard .062" Pin and Socket Receptacle Housing, 3 Circuits, without Mounting Ears, Natural	<u>03061032</u>

Use with Part(s)

Description	Part Number
Standard .062" Pin and Socket Female Crimp Terminals	<u>1561</u>
Standard .062" Pin and Socket Female Crimp Terminals	<u>1855</u>
Standard .062" Pin and Socket Male Crimp Terminals	<u>1560</u>
Standard .062" Pin and Socket Male Crimp Terminals	<u>1854</u>
Standard .062" Pin and Socket Male PC Tail Terminals	<u>1778</u>
Standard .062" Pin and Socket	

Female PC Tail Terminals	<u>1779</u>
--------------------------	-------------

This document was generated on Sep 24, 2025