

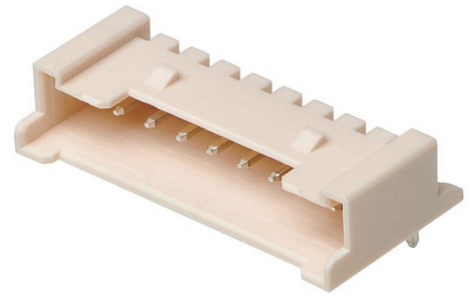
**Part Number :** [353631260](#)

**Product Description :** 2.00mm Pitch Sherlock Wire-to-Board Header, Right-Angle, with Positive Lock, 12 Circuits

**Series Number :** 35363

**Status :** Not Recommended For New Design

**Product Category :** PCB Headers and Receptacles



---

## Documents and Resources

### Drawings

[353631260\\_sd.pdf](#)

[353631260\\_stp.zip](#)

[Symbol and Footprint \(Multi-Format\)](#)


### Specifications

[PS-35507-001-001.pdf](#)

---

## Product Environment Compliance

### Compliance

|                    |   |
|--------------------|---|
| GADSL/IMDS         | Compliant with Exemption 44   |
| China RoHS         |  per SJ/T 11365-2006 |
| EU ELV             | Not Relevant  |
| Low-Halogen Status | Low-Halogen per IEC 61249-2-21  |
| REACH SVHC         | Not Contained per D(2024)6225-DC (07 Nov 2024)  |
| EU RoHS            | Compliant per EU 2015/863   |

### Compliance Statements

- EU RoHS
- REACH SVHC
- Low-Halogen

### Industry Documents

- IPC 1752A Class C
- IPC 1752A Class D

- Molex Product Compliance Declaration
- IEC-62474
- chemSHERPA (xml)

Substances of Interest

- PFAS

EU RoHS Certificate of Compliance

Additional Product Compliance Information

---

## Part Details

### General

|                |  |
|----------------|--|
| Status         | Not Recommended For New Design   |
| Category       | PCB Headers and Receptacles  |
| Series         | 35363  |
| Description    | 2.00mm Pitch Sherlock Wire-to-Board Header, Right-Angle, with Positive Lock, 12 Circuits |
| Application    | Signal, Wire-to-Board  |
| Component Type | PCB Header   |
| Product Name   | Sherlock   |
| UPC            | 822348260621   |

### Agency

|     |         |
|-----|---------|
| CSA | LR19980 |
| UL  | E29179  |

### Electrical

|                               |      |
|-------------------------------|------|
| Current - Maximum per Contact | 2.0A |
| Voltage - Maximum             | 125V |

### Physical

|                                |         |
|--------------------------------|---------|
| Breakaway                      | No      |
| Circuits (Loaded)              | 12      |
| Circuits (maximum)             | 12      |
| Color - Resin                  | Natural |
| Durability (mating cycles max) | 30      |

|                                |                    |
|--------------------------------|--------------------|
| First Mate / Last Break        | No                 |
| Glow-Wire Capable              | No                 |
| Guide to Mating Part           | No                 |
| Keying to Mating Part          | No                 |
| Lock to Mating Part            | Yes                |
| Material - Plating Mating      | Tin                |
| Material - Plating Termination | Tin                |
| Material - Resin               | Nylon              |
| Net Weight                     | 0.780/g            |
| Number of Rows                 | 1                  |
| Orientation                    | Right Angle        |
| Packaging Type                 | Bag                |
| PCB Locator                    | No                 |
| PCB Retention                  | Yes                |
| PCB Thickness - Recommended    | 1.60mm             |
| PC Tail Length                 | 3.20mm             |
| Pitch - Mating Interface       | 2.00mm             |
| Polarized to Mating Part       | Yes                |
| Polarized to PCB               | No                 |
| Shrouded                       | Partially Shrouded |
| Stackable                      | No                 |
| Temperature Range - Operating  | -40° to +105°C     |
| Termination Interface Style    | Through Hole       |

---

## Mates With / Use With

### Mates with Part(s)

| Description                  | Part Number  |
|------------------------------|--------------|
| Sherlock Receptacle Housings | <u>35507</u> |

---

This document was generated on May 09, 2026