

# AKPE002012102R2MA2

Search by :

[Part Number](#)
[Characteristics](#)
[Cross reference](#)


MP Auto ?

Closed Magnetic Circuit Type  
Multilayer

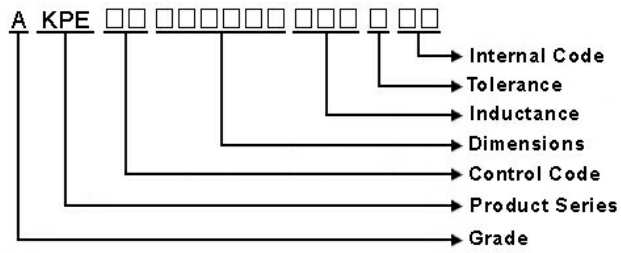
[Series Pdf](#)

[RoHSREACHCoC](#)

[ICP Report](#)

## Product detail

|                       |             |
|-----------------------|-------------|
| L(mm) ±               | 2.0±0.2     |
| W(mm) ±               | 1.25±0.2    |
| T(mm) ±               | 1.0Max.     |
| Inductance(uH)        | 2.2         |
| Tolerance(±%)         | 20          |
| Test Frequency        | 3MHz,200mV  |
| RDC(ohm)              | 0.125       |
| RDC Tolerance(±%)     | 25          |
| Isat(A)Max            | 0.5         |
| Irms(A)Max.85°C*1     | 1.6         |
| Irms(A)Max.125°C*1    | 1.2         |
| Operating Temperature | -40°C~125°C |



## Products

Power Inductor  
 EMI-Common Mode Choke  
 EMI-Bead  
 RF-Signal Inductor  
 RF-Passives/Antennas  
 LAN Transformer  
 Resistor & Current Sensor

## Applications

Automotive  
 Industrial  
 Server/DataCenter  
 Communication  
 Mobile and Tablet  
 Computer/Laptop  
 Consumer

## Design Tools

Simulation Tool  
 Product Search Engine  
 E-Catalogue

## About Us

Corporate Overview  
 Corporate Milestones  
 Core Technology  
 Certificates & Awards  
 Quality and Social Responsibility

## Investor

## News

Media Center

New Products

Events

Product Notices

## Contact Us

Contact Info

Contact Form

Join Chilisin

Terms of Use

Privacy policy

Sitemap



Inductor



Resistor



Powder

Copyrights © 2018. Chilisin. All rights reserved.