

## Han-Eco 24B Outd-HSM1-w. DL-M40-glanded

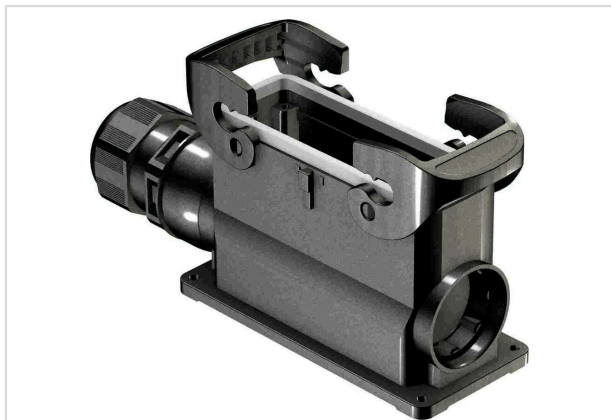


Image is for illustration purposes only. Please refer to product description.

Part number	19 43 324 0233
Specification	Han-Eco 24B Outd-HSM1-w. DL-M40-glanded
HARTING eCatalogue	<a href="https://harting.com/19433240233">https://harting.com/19433240233</a>

### Identification

Category	Hoods / Housings
Series of hoods/housings	Han-Eco® B
Type of hood/housing	Surface mounted housing
Description of hood/housing	With integrated cable gland

### Version

Size	24 B
Version	Side entry
Number of cable entries	1
Cable entry	1x M40
Locking type	Double locking lever
Field of application	Hoods/housings for outdoor applications

### Technical characteristics

Limiting temperature	-40 ... +125 °C
Note on the limiting temperature	For use as a connector according to IEC 61984.
Number of relockings	≥500
Degree of protection acc. to IEC 60529	IP66
Clamping range	16 ... 28 mm

### Material properties

Material (hood/housing)	Polyamide (PA) Fibre-glass reinforced
-------------------------	--



Pushing Performance  
Since 1945

## Material properties

Colour (hood/housing)	RAL 9005 (jet black)
Material (seal)	FPM
Colour (seal)	RAL 7001 (silver-grey)
Material (locking)	Polyamide (PA) Fibre-glass reinforced
Colour (locking)	RAL 9005 (jet black)
Material flammability class acc. to UL 94	V-0
Material flammability class acc. to UL 94 (locking levers)	V-0
RoHS	compliant with exemption
RoHS exemptions	6(c): Copper alloy containing up to 4 % lead by weight
ELV status	compliant with exemption
China RoHS	50
REACH Annex XVII substances	Not contained
REACH ANNEX XIV substances	Not contained
REACH SVHC substances	Yes
REACH SVHC substances	Lead
California Proposition 65 substances	Yes
California Proposition 65 substances	Lead
Fire protection on railway vehicles	EN 45545-2 (2020-08) + A1 (2023-10)
Requirement set with Hazard Levels	R22 (HL 1-2) R23 (HL 1-3)

## Specifications and approvals

Specifications	IEC 61984 EN 45545-2 Fire protection on railway vehicles
Approvals	CE

## Commercial data

Packaging size	1
Net weight	364 g
Country of origin	Germany
European customs tariff number	85389099
GTIN	5713140180444
eCl@ss	27440202 Shell for industrial connectors



**Pushing Performance**  
Since 1945

## Commercial data

ETIM	EC000437
UNSPSC 24.0	39121466