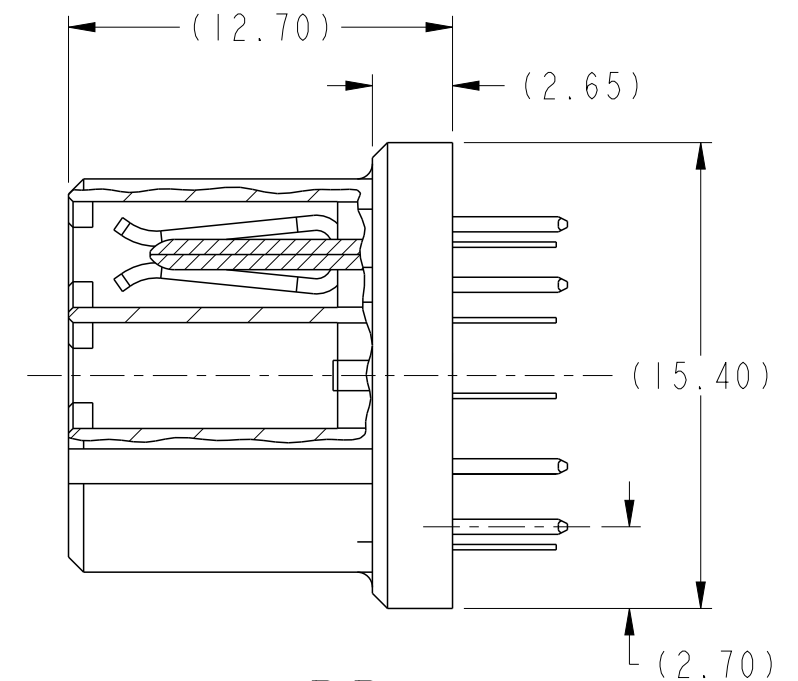
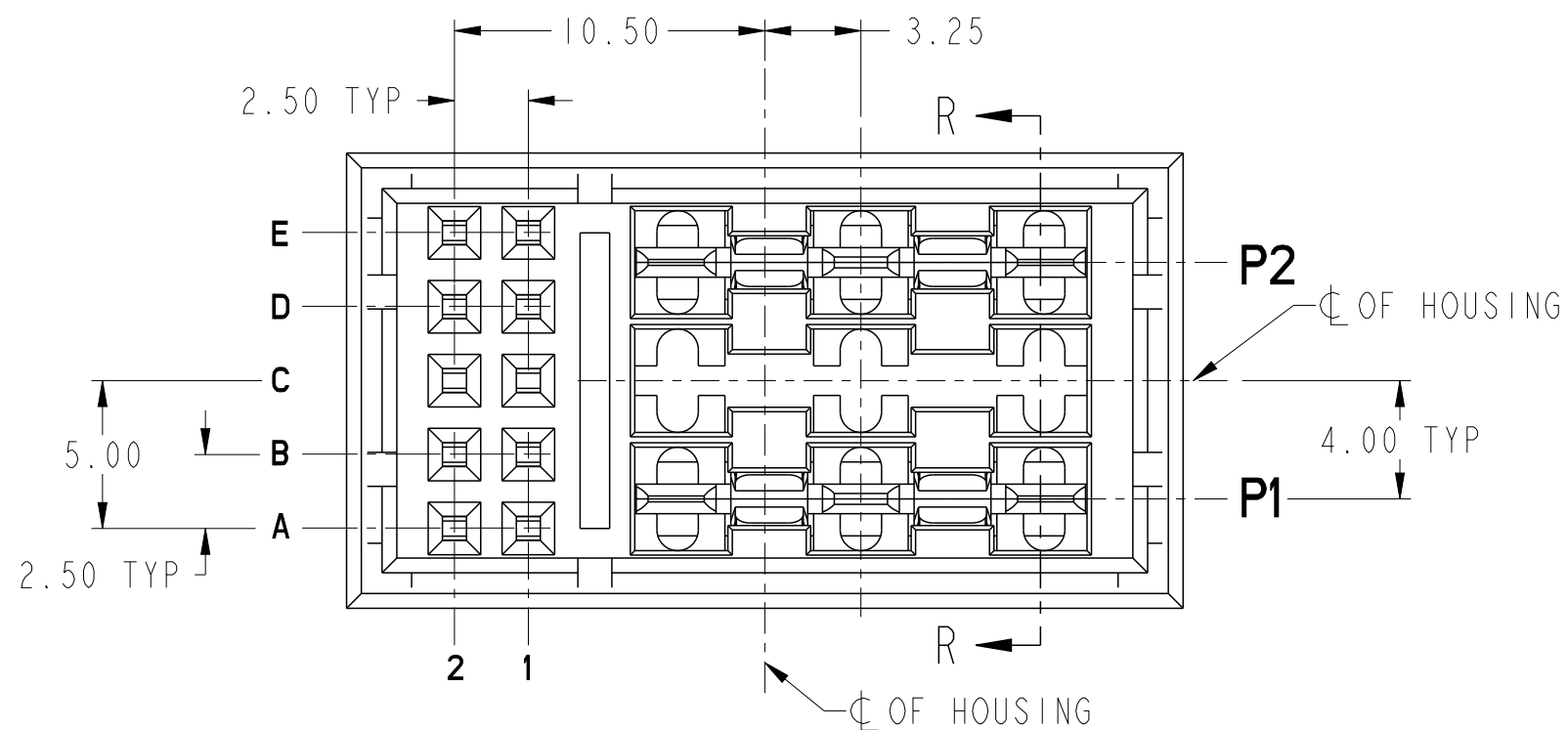
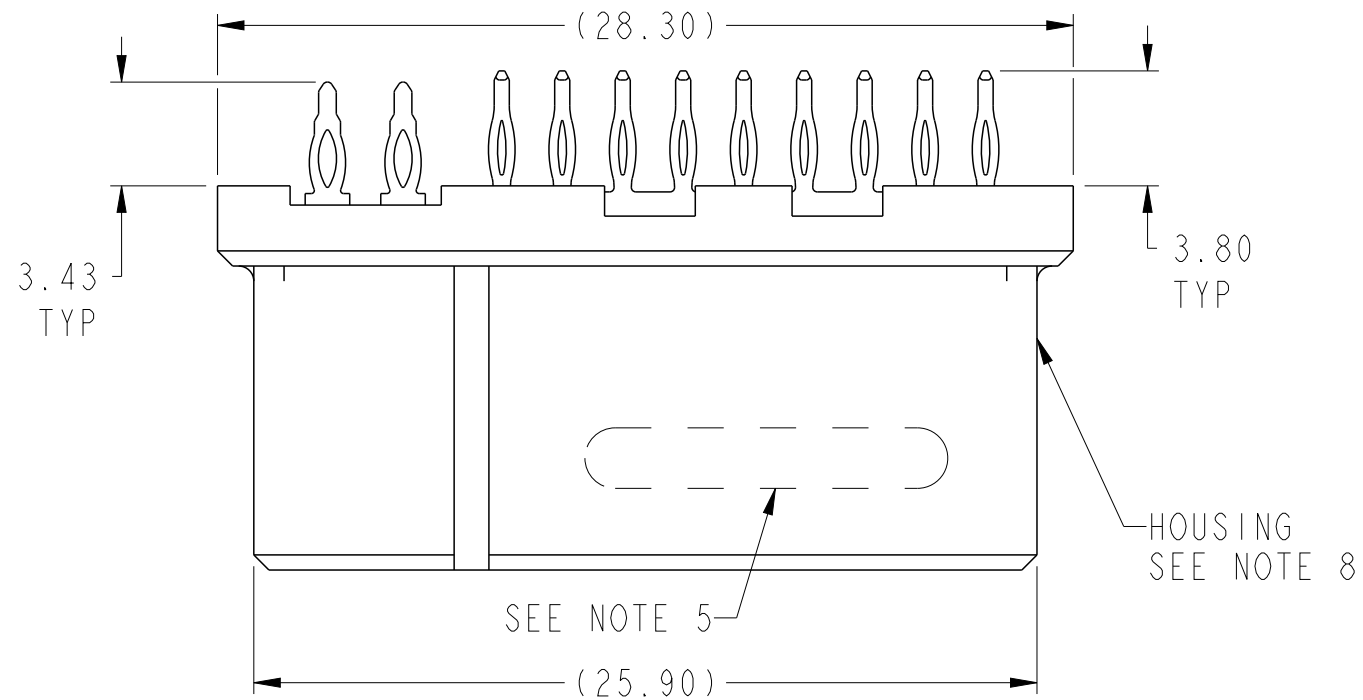
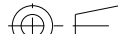
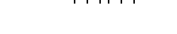



10139864-001LF



SECTION R-R

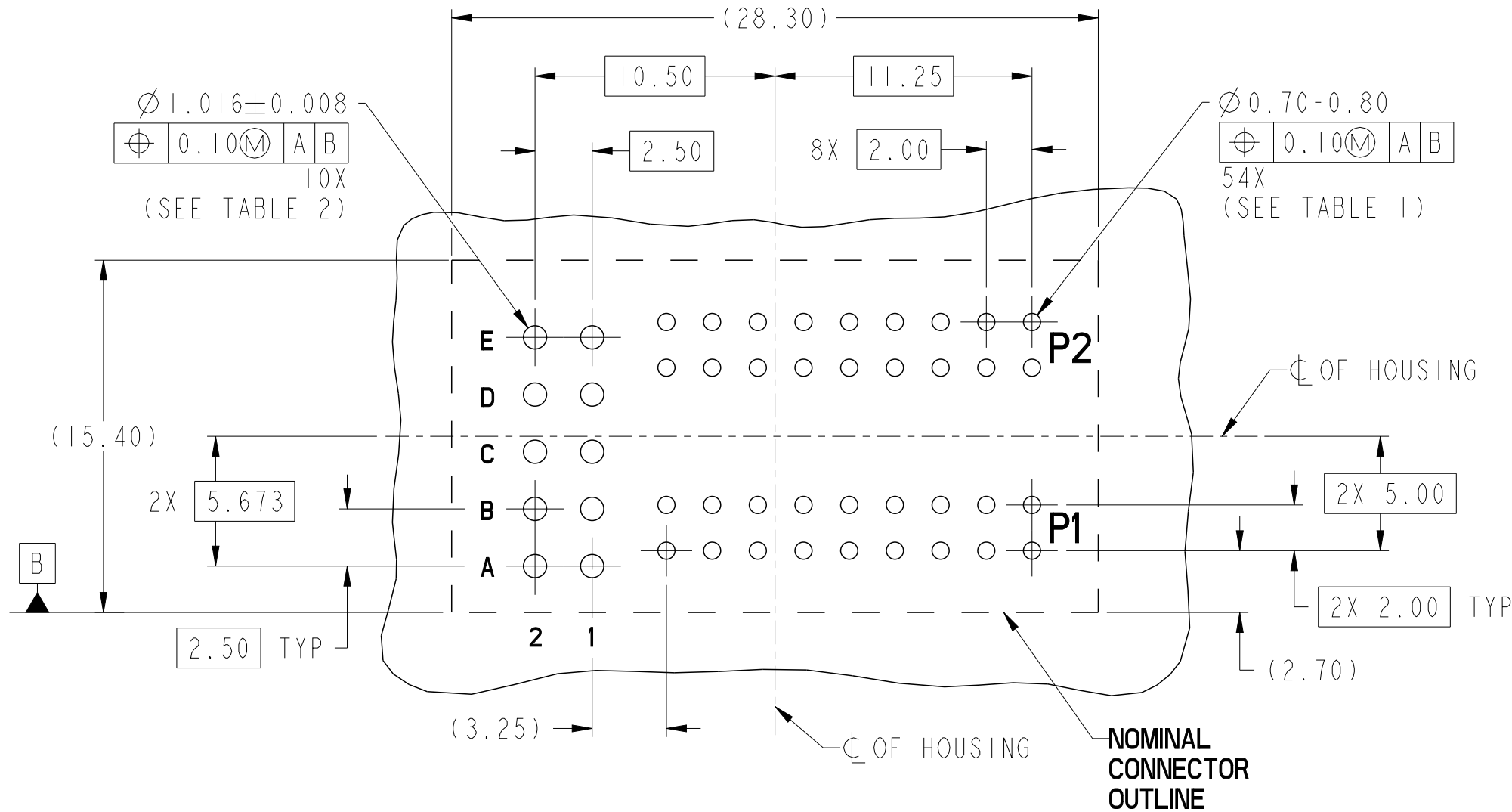
spec ref -				dr Chris Gieski 2016/05/31		<div>projection</div> <div></div> <div></div> <div>mm</div>		size A3		scale 4:1	
tolerance std -				eng Chris Gieski 2016/12/02				ecn no ELX-V-25516-1			
ASME Y14.5				chr -				rel level Released			
TOLERANCES UNLESS OTHERWISE SPECIFIED				appr Skip Fry 2016/12/03		product family PwrMAX					
<div>surface -</div> <div></div> <div>ASME Y14.5</div>		linear		0.X ±0.5		<div>Amphenol FCI</div> <div>title VERT RECPT ASSY 2P+10S</div> <div>PwrMAX Mezz POWER CONNECTOR</div>		<div>dwg no 10139864</div>		rev B	
		0.XX ±0.25									
		0.XXX ±0.100									
angular		0° ±2°		www.fci.com		cat. no. -		Product - Customer Drw		sheet 1 of 4	

A

B

C

D



RECOMMENDED PCB LAYOUT
COMPONENT SIDE
(SEE NOTE 6)

spec ref -				dr		Chris Gieski	2016/05/31		<div>projection</div> <div></div>	<div>mm</div> <div></div>	size		A3	scale		4:1					
tolerance std -				eng		Chris Gieski	2016/12/02				ecn no						ELX-V-25516-1				
ASME Y14.5				chr		-	-				rel level								Released		
TOLERANCES UNLESS OTHERWISE SPECIFIED				appr		Skip Fry	2016/12/03				product family				PwrMAX						
<div>surface</div> <div></div> <div>ASME Y14.5</div>		linear	0.X		±0.5		<div>Amphenol FCI</div>	title	VERT RECPT ASSY 2P+10S						dwg no	10139864				rev	B
			0.XX		±0.25																
			0.XXX		±0.100																
ASME Y14.5		angular	0°		±2°		www.fci.com		cat. no.		-		Product - Customer Drw						sheet 2 of 4		

A

B

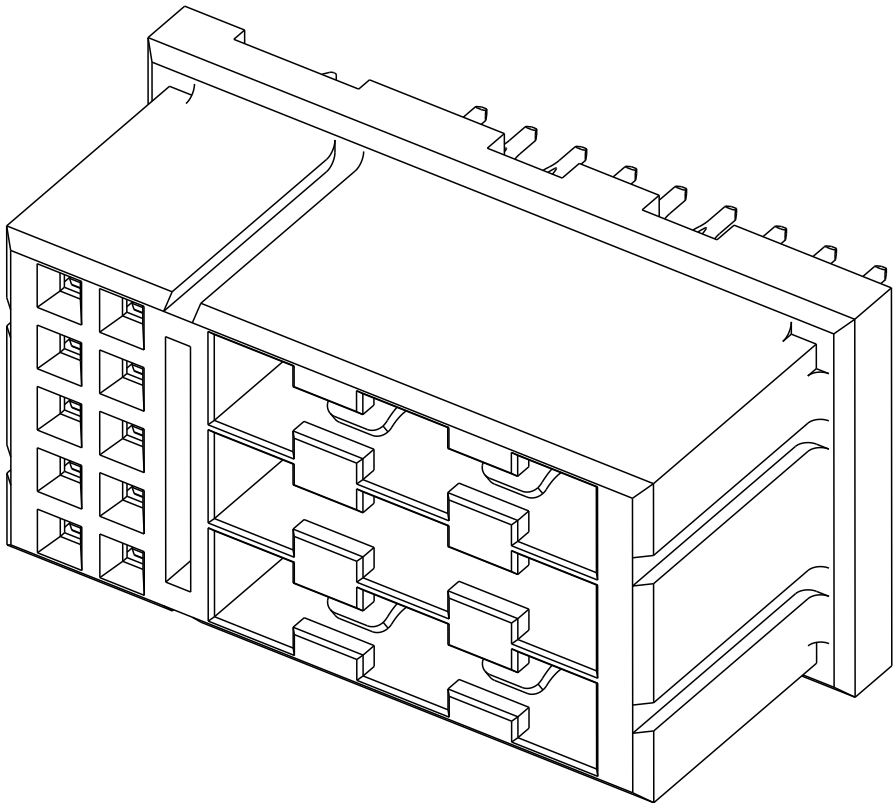
C

D

PART NUMBER	TAIL PLATING	TAIL TYPE
10139864-001LF	Sn	PRESS-FIT

NOTES:

- CONNECTOR MATERIALS:
HOUSING: HIGH TEMPERATURE THERMOPLASTIC, BLACK
UL 94V-0 COMPLIANT
CONTACTS: HIGH PERFORMANCE COPPER ALLOY
- CONTACT FINISH: HIGH PERFORMANCE SILVER BASED PLATING.
CONTACT TAIL FINISH: Sn PLATING 0.5 - 1.5µm
- PRODUCT SPECIFICATION: GS-12-1344.
- APPLICATION SPECIFICATION: GS-20-0463.
- PRODUCT MARKING (PRODUCT NUMBER & DATE CODE) ON HOUSING IN AREA SHOWN.
- MINIMUM NOMINAL PCB THICKNESS: 1.6mm
- PACKAGING MEETS FCI SPECIFICATION GS-14-2494.
- HOUSING COMPONENT WILL WITHSTAND EXPOSURE TO 260°C
PEAK TEMPERATURE FOR 60 SECONDS IN A CONVECTION, INFRA-RED,
OR VAPOR PHASE REFLOW OVEN.
- COPPER PLATING THICKNESS IN CENTER OF VIA-HOLE CAN BE
NO MORE THAN 0.003 LESS THAN OTHER AREAS.
- ALL HOLE SIZES ARE FINISHED HOLE SIZES.



spec ref -				dr Chris Gieski		2016/05/31		projection		mm		size A3		scale 4:1					
tolerance std -		TOLERANCES UNLESS OTHERWISE SPECIFIED				eng Chris Gieski		2016/12/02											
ASME Y14.5						chr -		-											
						appr Skip Fry		2016/12/03								product family PwrMAX		rel level Released	
surface		linear		0.X ±0.5		0.XX ±0.25		0.XXX ±0.100		Amphenol FCI		title VERT RECPT ASSY 2P+10S		PwrMAX Mezz POWER CONNECTOR		dwg no 10139864		rev B	
ASME Y14.5		angular		0° ±2°		www.fci.com		cat. no. -		Product - Customer Drw		sheet 4 of 4							