

PD-1243-IOLINK Hardware Manual

Hardware Version V1.00 | Document Revision V1.01 • 2021-APRIL-08

PD-1243-IOLINK is a small easy-to-use mechatronic PANdrive™ IO-Link® actuator device. It combines a NEMA17 stepper motor with controller and driver electronics. The industry-standard IO-Link connection through the standard 4-pin M12 connector offers full control over the stepper motor as well as configuration, and status monitoring.



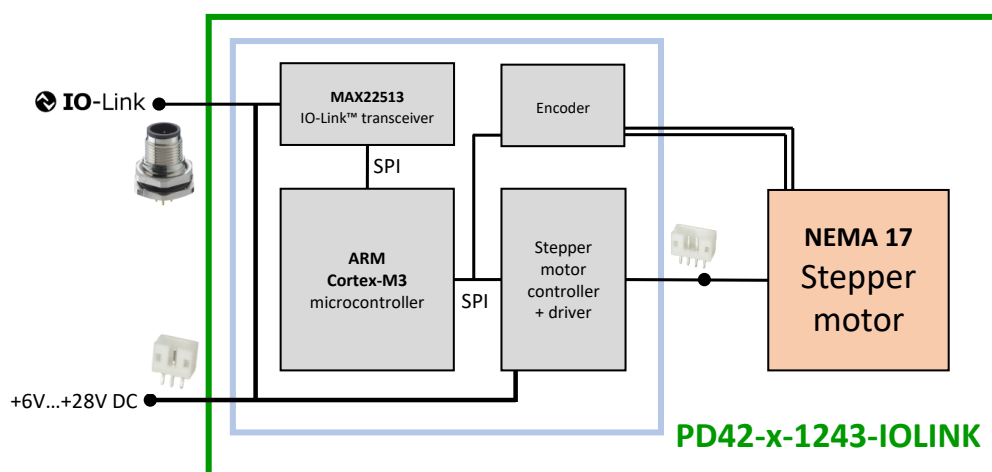
Features

- Stepper motor **NEMA17** / 42mm
- **+6...+28V** DC supply voltage
- Up to **1.2A RMS** motor current
- **IO-Link®** interface
- Integrated motion controller
- **PANdrive™** smart motor
- **StealthChop™** silent PWM mode
- **SpreadCycle™** current control
- **StallGuard2™** load detection
- **CoolStep™** autom. current scaling
- Integrated absolute position sensor

Applications

- Laboratory Automation
- Semiconductor Handling
- Factory Automation
- Manufacturing
- Robotics
- Test & Measurement

Simplified Block Diagram



Contents

1	Features	3
1.1	TRINAMIC's Unique Features	4
1.1.1	StealthChop™	4
1.1.2	SpreadCycle™	4
1.1.3	StallGuard2™	4
1.1.4	CoolStep™	5
2	Order Codes	6
3	Mechanical and Electrical Interfacing	7
3.1	Stepper Motors Characteristics	7
3.2	Dimensions of PD-1243-IOLINK	8
3.3	Overall dimensions of NEMA17	9
3.4	Integrated SensOstep™ encoder	9
4	Connectors	10
4.1	Power Supply Input Connector	11
4.2	Motor Connector	11
4.3	IO-Link M12 Connector	12
5	On-Board LEDs	12
6	Communication	13
6.1	IO-Link	13
7	Torque curves	14
8	Functional Description	15
9	Operational Ratings and Characteristics	16
10	Figures Index	17
11	Tables Index	18
12	Supplemental Directives	19
12.1	Producer Information	19
12.2	Copyright	19
12.3	Trademark Designations and Symbols	19
12.4	Target User	19
12.5	Disclaimer: Life Support Systems	19
12.6	Disclaimer: Intended Use	19
12.7	Collateral Documents & Tools	20
13	Revision History	21
13.1	Hardware Revision	21
13.2	Document Revision	21



1 Features

The PANdrive™ PD-1243-IOLINK is a compact full-mechatronics solution including a NEMA17 (42mm flange) size stepper motor with motor controller and driver electronics using a MAX22513 IO Link transceiver. The IO-Link firmware allows to control the module using the 4-wire bi-directional point-to-point communication link with standardized technology (IEC 61131-9) that regulates how sensors and actuators in industrial systems interact with a main controller.

Motion Controller / Driver

- Supply voltage +24V DC (+6... +28V DC)
- Motor current: up to 1.2A RMS
- Highest microstep resolution, up to 256 microsteps per full step
- Motion profile calculation in real-time
- Live alteration of motor parameters (e.g. position, velocity, acceleration)
- SpreadCycle™ highly dynamic current control chopper
- StealthChop™ for quiet operation and smooth motion
- High-precision sensorless load measurement with StallGuard2™
- Automatic current scaling algorithm CoolStep™ to save energy and keep your drive cool
- Operation via IO Link limited to max. IO Link power for applications with lower torque requirements
- Additional supply interface for applications with higher power requirements
- Integrated absolute position sensor

IO-Link Interface

- Robust connection through industry standard M12 connector
- MAX22513 IO Link transceiver
- Point-to-point 4-wire interface (L+, C/Q, and L-) is reverse voltage / short circuit protected



1.1 TRINAMIC's Unique Features

1.1.1 StealthChop™

StealthChop is an extremely quiet mode of operation for low and medium velocities. It is based on a voltage mode PWM. During standstill and at low velocities, the motor is absolutely noiseless. Thus, StealthChop operated stepper motor applications are very suitable for indoor or home use. The motor operates absolutely free of vibration at low velocities. With StealthChop, the motor current is applied by driving a certain effective voltage into the coil, using a voltage mode PWM. There are no more configurations required except for the regulation of the PWM voltage to yield the motor target current.

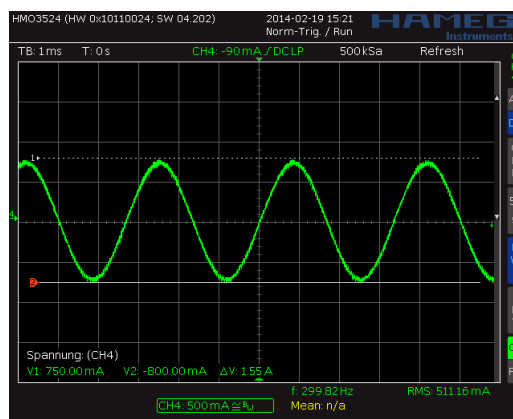


Figure 1: Motor coil sine wave current using StealthChop (measured with current probe)

1.1.2 SpreadCycle™

The SpreadCycle chopper is a high-precision, hysteresis-based, and simple to use chopper mode, which automatically determines the optimum length for the fast-decay phase. Several parameters are available to optimize the chopper to the application. SpreadCycle offers optimal zero crossing performance compared to other current controlled chopper algorithms and thereby allows for highest smoothness. The true target current is powered into the motor coils.

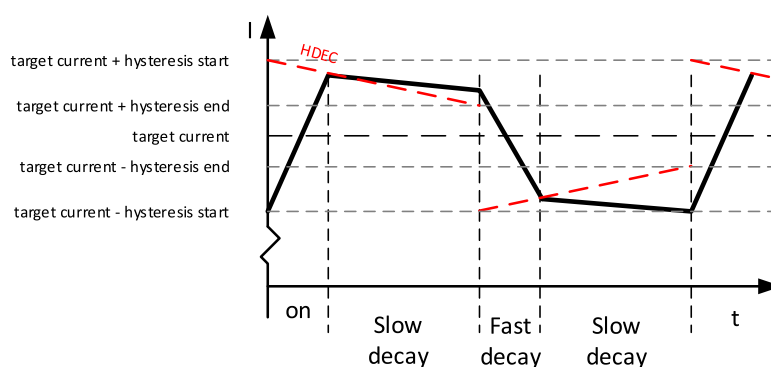


Figure 2: SpreadCycle principle

1.1.3 StallGuard2™

StallGuard2 is a high-precision sensorless load measurement using the back EMF of the motor coils. It can be used for stall detection as well as other uses at loads below those which stall the motor. The



StallGuard2 measurement value changes linearly over a wide range of load, velocity, and current settings. At maximum motor load, the value reaches zero or is near zero. This is the most energy-efficient point of operation for the motor.

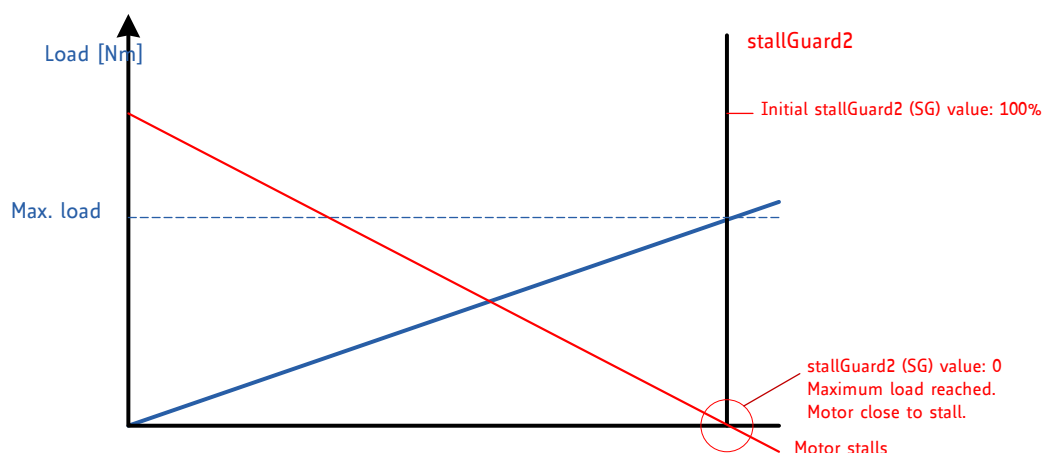


Figure 3: StallGuard2 Load Measurement as a Function of Load

1.1.4 CoolStep™

CoolStep is a load-adaptive automatic current scaling based on the load measurement via StallGuard2. CoolStep adapts the required current to the load. Energy consumption can be reduced by as much as 75%. CoolStep allows substantial energy savings, especially for motors which see varying loads or operate at a high duty cycle. Because a stepper motor application needs to work with a torque reserve of 30% to 50%, even a constant-load application allows significant energy savings because CoolStep automatically enables torque reserve when required. Reducing power consumption keeps the system cooler, increases motor life, and allows for cost reduction.

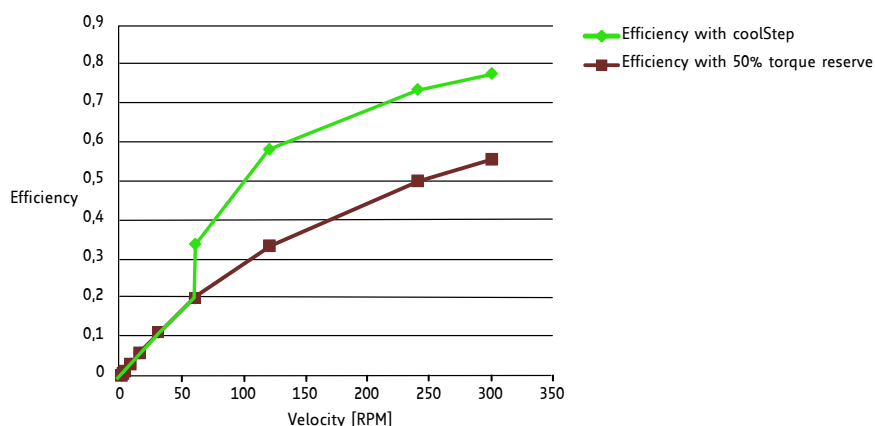


Figure 4: Energy Efficiency Example with CoolStep



2 Order Codes

The following combination of motor and motor mounted controller is currently available:

*The length of the **PANdrive™** is specified without the length of the motor axis shaft. For the overall length of the product please add 25mm*

Order Code	Description	Size (WxHxL) incl. connector
PD42-1-1243-IOLINK	PANdrive™ with NEMA17 stepper motor, 0.27Nm, 1.0A RMS, +24V DC, TMCM-1243 controller module, IO-Link interface	42mm x 42mm x 64mm

Table 1: Order Codes



3 Mechanical and Electrical Interfacing

The PD-1243-IOLINK consists of the QSH4218-35-10-027 NEMA17 / 42mm stepper motor with 1A RMS rated coil current and 0.27Nm holding torque. The PANdrive™ also includes a driver module for up-to 1.2A RMS motor coil current mounted on the backside of the motor and an integrated SensOstep™ encoder for absolute position monitoring.

NOTICE

Note: In order to make proper use of the integrated SensOstep™ encoder (the sensor IC is placed on the bottom of the PCB) the PD-1243-IOLINK electronics should not be removed/moved relative to the motor. In case the integrated encoder feature is not used, the electronics may be moved or even removed from the motor and placed somewhere else according to application requirements.

3.1 Stepper Motors Characteristics

Specifications	Parameter	Unit	Value
Step angle		°	1.8
Step angle accuracy		%	±5
Ambient temperature	T_{amb}	°C	-20...+50
Max. motor temperature	$T_{motor_{max}}$	°C	80
Shaft radial play (450g load)		mm	0,02
Shaft axial play (450g load)		mm	0,08
Max radial force (20mm from front flange)		N	28
Max axial force		N	10
Rated voltage	V_{rated}	V	5.3
Rated phase current	$I_{RMS_{rated}}$	A	1.0
Phase resistance at 20°C	R_{coil}	Ω	5.3
Phase inductance (typ.)	L_{coil}	mH	6.6
Holding torque		Nm	0.27
Insulation class			B
Rotor inertia		g cm ²	35
Weight	M	kg	0.22

Table 2: PD-1243-IOLINKMotor Parameters



3.2 Dimensions of PD-1243-IOLINK

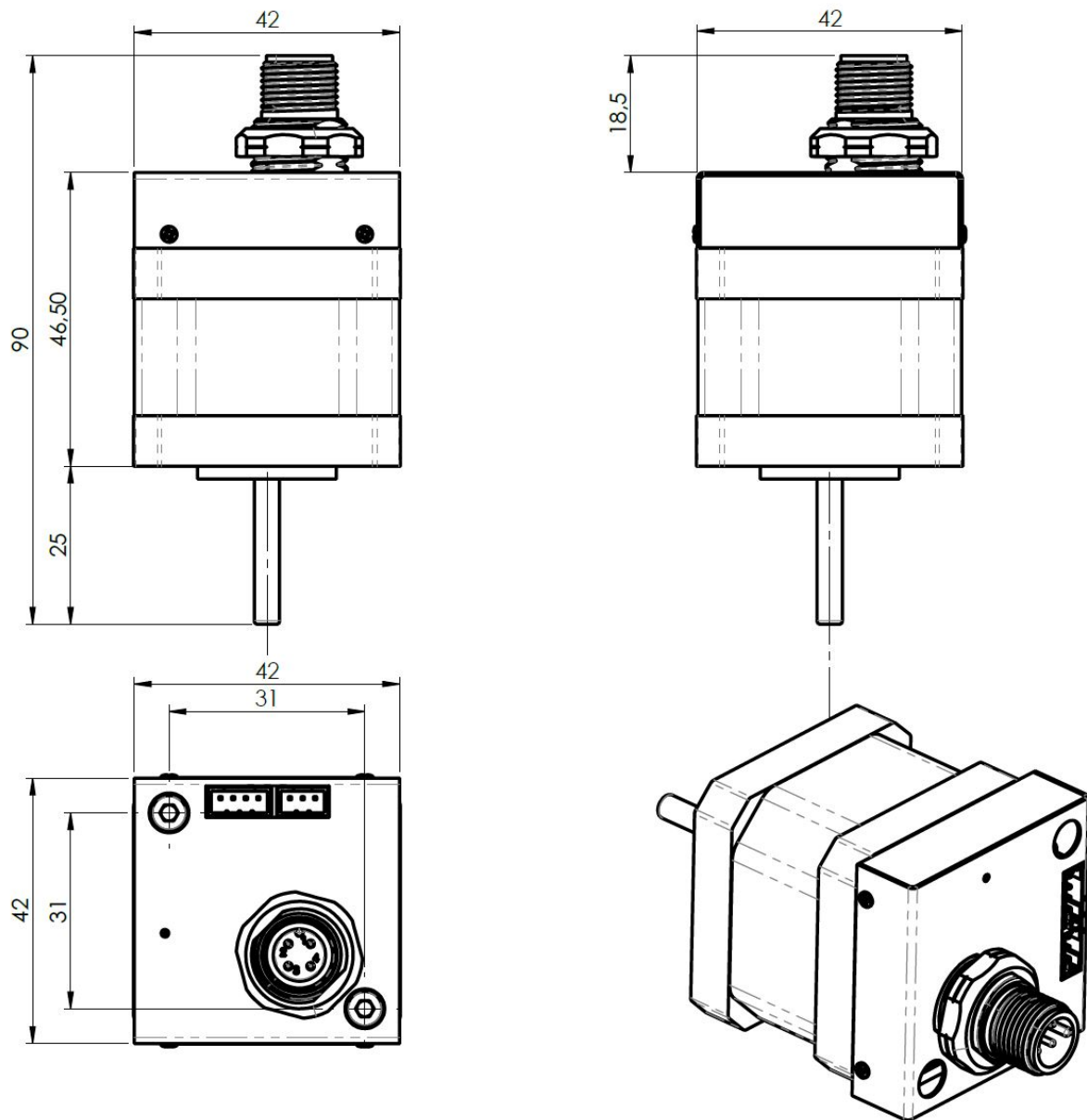


Figure 5: PD-1243-IOLINK with NEMA17 / 42mm stepper motor (all dimensions in mm)

3.3 Overall dimensions of NEMA17

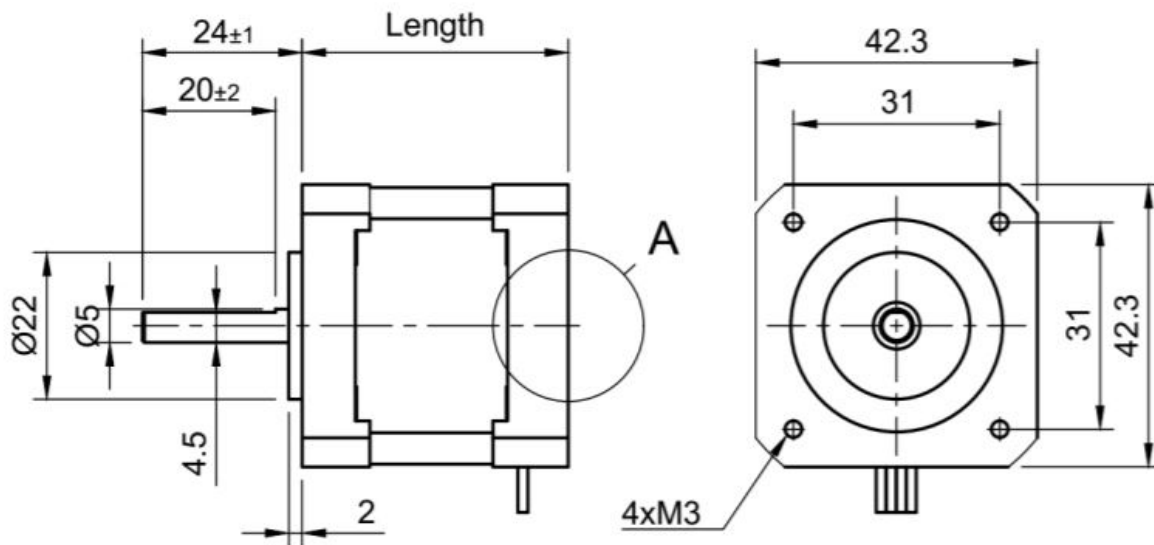


Figure 6: NEMA17 / 42mm stepper motor (all dimensions in mm)

3.4 Integrated SensOstep™ encoder

The PD-1243-IOLINK PANdrives offer integrated SensOstep™ encoders based on hall sensor technology. As the name "SensOstep" already indicates intended use of this type of compact and highly integrated encoder is step loss detection of motor movements. As soon as the motor has been moved to a new location the position may be verified using this encoder feedback. In case the stepper motor has lost one or multiple steps during movement e.g. due to overload / any obstacle encountered during movement the motor axes will jump for at least one electrical period / 4 full steps. This can be detected using the integrated encoder.

While the encoder offers 10bit (1024 steps) resolution per motor revolution the absolute position information is less accurate and depends on the displacement of the hall sensor based encoder IC relative to the magnet and motor axis among other factors. Every PANdrive™ has been tested for maximum deviation of +/- 5 encoder steps (static performance) relative to commanded microstep target position during final tests after assembly at our factory. This will ensure more than adequate performance of the integrated SensOstep™ encoder for step loss detection during motor movements.

NOTICE

Do not disassemble PANdrive™ when using integrated encoder In order to make proper use of the integrated SensOstep™ encoder (the sensor IC is placed on the bottom center of the pcb) the PD-1243-IOLINK electronics should not be removed/moved relative to the motor! Otherwise encoder performance might suffer.

Note: In case the integrated encoder feature is not used, the PD-1243-IOLINK electronics module may be moved or even removed from the motor and placed somewhere else according to application requirements.



4 Connectors

The PD-1243-IOLINK offers three connectors including the motor connector which is used for connecting the motor coils to the module. There are two connectors from the JST PH series: one motor connector with four pins (JST B4B-PH-K-S) and one power supply connector with three pins (JST B3B-PH-K-S). Separated from these, the most prominent connector on this product is the IO-Link 4-pin M12 plug.



Figure 7: PD-1243-IOLINK connectors

Connector Types and Mating Connectors		
Connector	Connector type on-board	Mating connector type
Power	JST B3B-PH-K-S (JST PH series, 3pins, 2mm pitch)	Connector housing: JST PHR-3 Contacts: JST SPH-002T-P0.5S Wire: 0.22mm ² , AWG 24
Motor	JST B4B-PH-K-S (JST PH series, 4pins, 2mm pitch)	Connector housing: JST PHR-4 Contacts: JST SPH-002T-P0.5S Wire: 0.22mm ² , AWG 24
IO-Link	4-pin M12 (A-type, 1231 04 T9CP, male, 4-pin, 5mm pitch)	any M12 female 4-pin, A-type

Table 3: Connector Types and Mating Connectors of the PD-1243-IOLINK

NOTICE

Start with power supply OFF and do not connect or disconnect motor during operation! Motor cable and motor inductivity might lead to voltage spikes when the motor is (dis)connected while energized. These voltage spikes might exceed voltage limits of the driver MOSFETs and might permanently damage them. Therefore, always switch off / disconnect power supply or at least disable driver stage before connecting / disconnecting motor.



4.1 Power Supply Input Connector

The PD-1243-IOLINK offers a 3pin JST PH series power supply input connector.

There are two ways to power the PANdrive:

For applications requiring just low torque the PANdrive can be used without additional power via IO Link only. Thereby, the master supplies the required power at 24V over the IO Link supply. Typical master system can provide around 200-250mA here. In this mode, the pins 2 and 3 of the power supply connector are bridged with a jumper.

For applications requiring more torque the power supplied via the IO Link master might not be sufficient. Therefore, an additional +24V motor supply can be connected via the power supply connector. In this case, the jumper between pin 2 and 3 is to be removed. Auxiliary power must be connected to pins 1 (GND) and 2 (+24V). Pin 3 (L+) comes from the IO Link and can be left open in that case.

Power Connector Pin Assignment			
Pin	Label	Direction	Description
1	GND	Power Ground	Common system supply and signal ground
2	+VM	+24V motor power input	(Auxiliary) power supply input for the motor driver stage (only the motor driver stage) +6...+28VDC
3	L+	IO Link power output	This is the IO Link power output derived from the IO Link master. Keep open if not used for the motor driver stage. The digital circuits including the MCU is supplied via IO Link power.

Table 4: Power Supply Connector Pin Assignment

NOTICE

Take care of polarity, wrong polarity can destroy the board!

4.2 Motor Connector

A second 4pin JST PH series connector is available for connection of a 2-phase bipolar stepper motor.

Motor Connector Pin Assignment			
Pin	Label	Direction	Description
1	A2	out	Pin 1 of motor coil A
2	A1	out	Pin 2 of motor coil A
3	B2	out	Pin 1 of motor coil B
4	B1	out	Pin 2 of motor coil B

Table 5: Motor Connector Pin Assignment



NOTICE

Do not connect or disconnect motor during operation! Motor cable and motor inductivity might lead to voltage spikes when the motor is (dis)connected while energized. These voltage spikes might exceed voltage limits of the driver MOSFETs and might permanently damage them. Therefore, always switch off / disconnect power supply or at least disable driver stage before connecting / disconnecting motor.

4.3 IO-Link M12 Connector

For serial communication through the PD-1243-IOLINK M12 connector with the point-to-point IO-Link connection between the IO-Link master (multi-port controller or gateway) and the IO-Link device (actuator) this standard connector (usually M12) and a 3-wire cable up to 20 meters in length is used.

IO-Link Connector Pin Assignment			
Pin	Label	Direction	Description
1	L+	+24V	Common system supply
2	DO/DI	DI or DO	DO Aux Out/DI Aux input
3	GND	Power Ground	Common system signal ground
4	C/Q	Switching signal	IO-Link Transceiver Input/Output

Table 6: IO-Link M12 Connector Pin Assignment

5 On-Board LEDs

The board offers two LEDs in order to indicate board status. The green LED indicates if the module is in operation and flashing slowly if this is the case. The blue LED indicates if the +5V supply is functioning. During reset to factory default values the green LED will be flashing fast.



Figure 8: PD-1243-IOLINK LEDs



6 Communication

6.1 IO-Link

IO-Link is a standardized technology (IEC 61131-9) regulating how sensors and actuators in industrial systems interact with a controller. For remote control and direct connection to a IO-Link master (multi-port controller or gateway) system the PD-1243-IOLINK provides a 3-wire point-to-point IO-Link device port (M12). The master can have multiple ports (commonly four or eight). Each port of the master connects to a unique IO-Link device, which can operate in either SIO mode or bidirectional communication mode. IO-Link is designed to work with existing industrial architectures such as fieldbus or industrial Ethernet and connects to existing PLCs or human-machine interfaces (HMI), enabling rapid adoption of this technology.

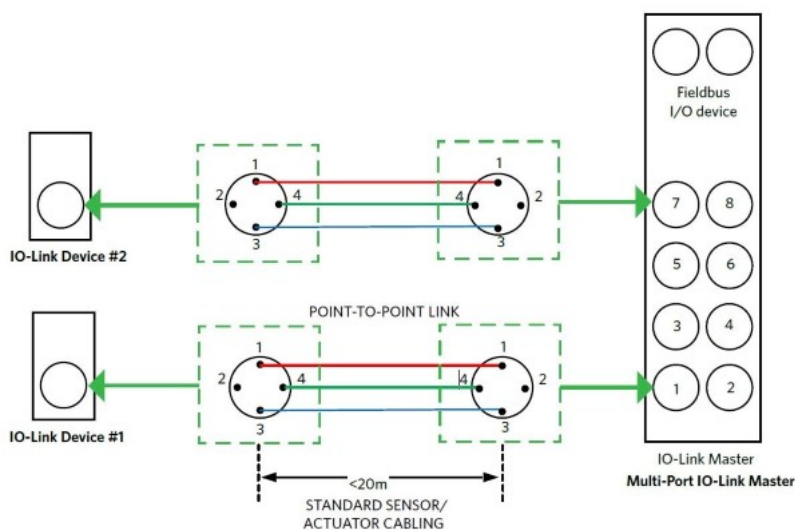


Figure 9: IO-Link Master/Device Setup

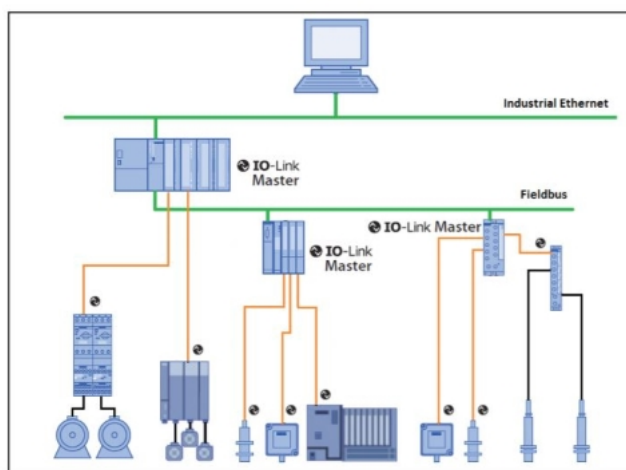


Figure 10: Example of system architecture using IO-Link Fieldbus and devices (sensors and actuators)



7 Torque curves

The following diagram show the torque vs. speed curves for the PD-1243-IOLINK at three different typical conditions. All measurements have been done in SpreadCycle chopper mode. The measurement conditions are:

1. $VDD = +24V$, $I_{COILRMS} = 1A$, 1/256 microstepping
2. $VDD = +24V$, $I_{COILRMS} = 1A$, half stepping
3. $VDD = +12V$, $I_{COILRMS} = 1A$, half stepping

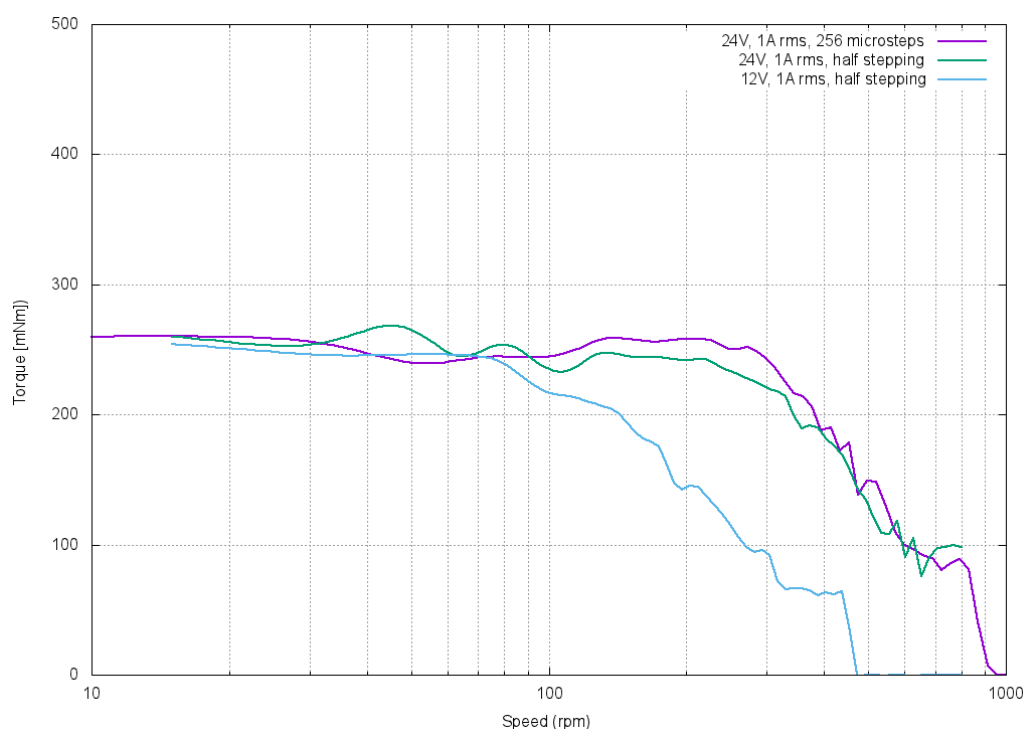


Figure 11: PD-1243-IOLINK torque vs. speed



8 Functional Description

The PD-1243-IOLINK is a full mechatronics solution including a 42mm flange (NEMA17) bipolar stepper motor. It includes the controller / driver electronics and a choice between three different NEMA 17 / 42mm flange size bipolar hybrid stepper motors with different lengths and torques.

The PD-1243-IOLINK can be controlled via IO-Link interface. The IO-Link connection through standard 4-pin M12 connector offers full control over the NEMA17 stepper motor as well as provide a industry-standard IO-Link communication protocol, enabling the opportunity of reconfigurable manufacturing solutions.

The PD-1243-IOLINK contains the following main components:

- Microcontroller (ARM Cortex-M3™), responsible for overall control and communication
- Highly integrated advanced stepper motor controller supporting the two phase stepper motor
- Advanced stepper motor driver with StallGuard2™ and CoolStep™ ensuring noiseless operation combined with maximum efficiency and best motor torque.
- MAX22513 low power IO-Link device transceiver
- Integrated voltage regulators (+5V and +3V3) required for supply of all on-board digital circuits
- Hall-based absolute position sensor



9 Operational Ratings and Characteristics

NOTICE

Never Exceed the absolute maximum ratings! Keep the power supply voltage below the upper limit of +28V! Otherwise the board electronics will seriously be damaged! Especially, when the selected operating voltage is near the upper limit a regulated power supply is highly recommended.

General Operational Ratings					
Symbol	Parameter	Min	Typ	Max	Unit
V_{AuxPower}	Auxiliary power supply voltage	10	12...24	28	V
$V_{\text{L+}}$	IO Link supply voltage		24		V
I_{Power}	Power supply current		$\ll I_{\text{COIL_RMS}}$	$1.4 \times I_{\text{COIL_RMS}}$	A
$I_{\text{COIL_PEAK}}$	Motor coil current for sine wave peak (chopper regulated, adjustable via software)	0	0...1.4	1.7	A
$I_{\text{COIL_RMS}}$	Continuous motor current (RMS)	0	0...1	1.2	A
T_{ENV}	Environmental temperature at rated current (no forced cooling required)	-10		50	°C

Table 7: General operational ratings of the module



10 Figures Index

1	Motor coil sine wave current using StealthChop (measured with current probe)	4	6	NEMA17 / 42mm stepper motor (all dimensions in mm)	9
2	SpreadCycle principle	4	7	PD-1243-IOLINK connectors	10
3	StallGuard2 Load Measurement as a Function of Load	5	8	PD-1243-IOLINK LEDs	12
4	Energy Efficiency Example with Cool-Step	5	9	IO-Link Master/Device Setup	13
5	PD-1243-IOLINK with NEMA17 / 42mm stepper motor (all dimensions in mm)	8	10	Example of system architecture using IO-Link Fieldbus and devices (sensors and actuators)	13
			11	PD-1243-IOLINK torque vs. speed	14



11 Tables Index

1	Order Codes	6	5	Motor Connector Pin Assignment . . .	11
2	PD-1243-IOLINKMotor Parameters . .	7	6	IO-Link M12 Connector Pin Assignment	12
3	Connector Types and Mating Conectors of the PD-1243-IOLINK	10	7	General operational ratings of the module	16
4	Power Supply Connector Pin Assignment	11	8	Hardware Revision	21
			9	Document Revision	21



12 Supplemental Directives

12.1 Producer Information

12.2 Copyright

TRINAMIC owns the content of this user manual in its entirety, including but not limited to pictures, logos, trademarks, and resources. © Copyright 2021 TRINAMIC. All rights reserved. Electronically published by TRINAMIC, Germany.

Redistributions of source or derived format (for example, Portable Document Format or Hypertext Markup Language) must retain the above copyright notice, and the complete Datasheet User Manual documentation of this product including associated Application Notes; and a reference to other available product-related documentation.

12.3 Trademark Designations and Symbols

Trademark designations and symbols used in this documentation indicate that a product or feature is owned and registered as trademark and/or patent either by TRINAMIC or by other manufacturers, whose products are used or referred to in combination with TRINAMIC's products and TRINAMIC's product documentation.

This Hardware Manual is a non-commercial publication that seeks to provide concise scientific and technical user information to the target user. Thus, trademark designations and symbols are only entered in the Short Spec of this document that introduces the product at a quick glance. The trademark designation /symbol is also entered when the product or feature name occurs for the first time in the document. All trademarks and brand names used are property of their respective owners.

12.4 Target User

The documentation provided here, is for programmers and engineers only, who are equipped with the necessary skills and have been trained to work with this type of product.

The Target User knows how to responsibly make use of this product without causing harm to himself or others, and without causing damage to systems or devices, in which the user incorporates the product.

12.5 Disclaimer: Life Support Systems

TRINAMIC Motion Control GmbH & Co. KG does not authorize or warrant any of its products for use in life support systems, without the specific written consent of TRINAMIC Motion Control GmbH & Co. KG.

Life support systems are equipment intended to support or sustain life, and whose failure to perform, when properly used in accordance with instructions provided, can be reasonably expected to result in personal injury or death.

Information given in this document is believed to be accurate and reliable. However, no responsibility is assumed for the consequences of its use nor for any infringement of patents or other rights of third parties which may result from its use. Specifications are subject to change without notice.

12.6 Disclaimer: Intended Use

The data specified in this user manual is intended solely for the purpose of product description. No representations or warranties, either express or implied, of merchantability, fitness for a particular purpose



or of any other nature are made hereunder with respect to information/specification or the products to which information refers and no guarantee with respect to compliance to the intended use is given.

In particular, this also applies to the stated possible applications or areas of applications of the product. TRINAMIC products are not designed for and must not be used in connection with any applications where the failure of such products would reasonably be expected to result in significant personal injury or death (safety-Critical Applications) without TRINAMIC's specific written consent.

TRINAMIC products are not designed nor intended for use in military or aerospace applications or environments or in automotive applications unless specifically designated for such use by TRINAMIC. TRINAMIC conveys no patent, copyright, mask work right or other trade mark right to this product. TRINAMIC assumes no liability for any patent and/or other trade mark rights of a third party resulting from processing or handling of the product and/or any other use of the product.

12.7 Collateral Documents & Tools

This product documentation is related and/or associated with additional tool kits, firmware and other items, as provided on the product page at: www.trinamic.com.



13 Revision History

13.1 Hardware Revision

Version	Date	Author	Description
V1.0	2020-OCT-21	HH	Initial version.

Table 8: Hardware Revision

13.2 Document Revision

Version	Date	Author	Description
V1.00	2020-OCT-21	HH	Initial version of hardware manual.
V1.01	2021-APR-08	BP	Change PD42-x-1243-IOLINK to PD-1243-IOLINK, remove 2-1243 and 3-1243

Table 9: Document Revision

