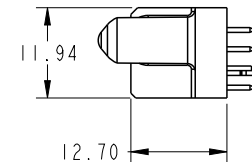
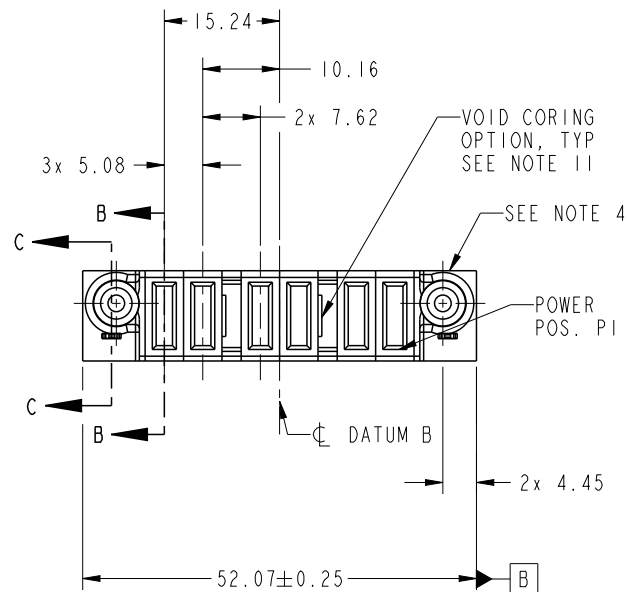




Copyright FCI.

PRODUCT NO.	ROWS	POWER				POWER			
		E2	P6	P5	P4	P3	P2	P1	E1
51940-537-- NOTE: 3	D C B A		PA	PA	PA	PA	PA	PA	

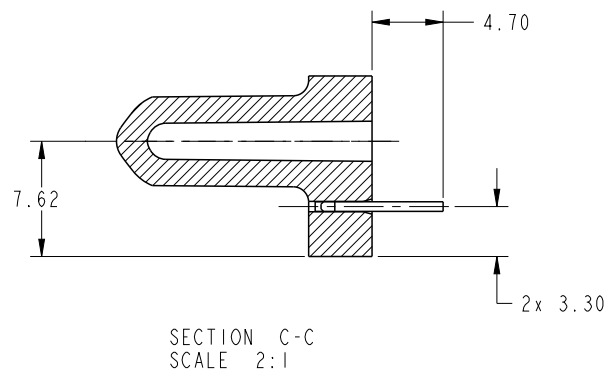
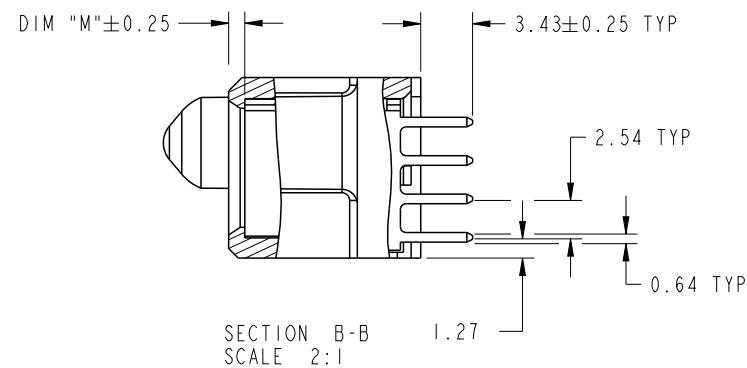


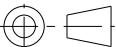


CODE	DIM "M" MATING LENGTH	CONTACT TYPE
PA	[1.07]	POWER
HA	[N/A]	HOLD-DOWN

spec ref		*		dr	Ruan MT	2014/05/26	projection 	MM 	size	A4	scale	1:1		
tolerance std	TOLERANCES UNLESS OTHERWISE SPECIFIED			eng	De-Ming Lu	2014/06/05			ecn no	-				
				chr	-	-								
SEE NOTE					appr	Pei-Ming Zheng	2014/06/05	product family		PwrBlade		rel level	Released	
surface 	linear	0.X	±0.5		title 6P VERTICAL SOLDER RECEPT			dwg no	51940-537			rev A		
		0.XX	±0.25											
		0.XXX	±0.1											
	angular	0°	±2°	www.fci.com	cat. no.			*	Product - Customer Drw			sheet 1 of 4		

PRODUCT NUMBER

51940-537--  
NOTE: 3

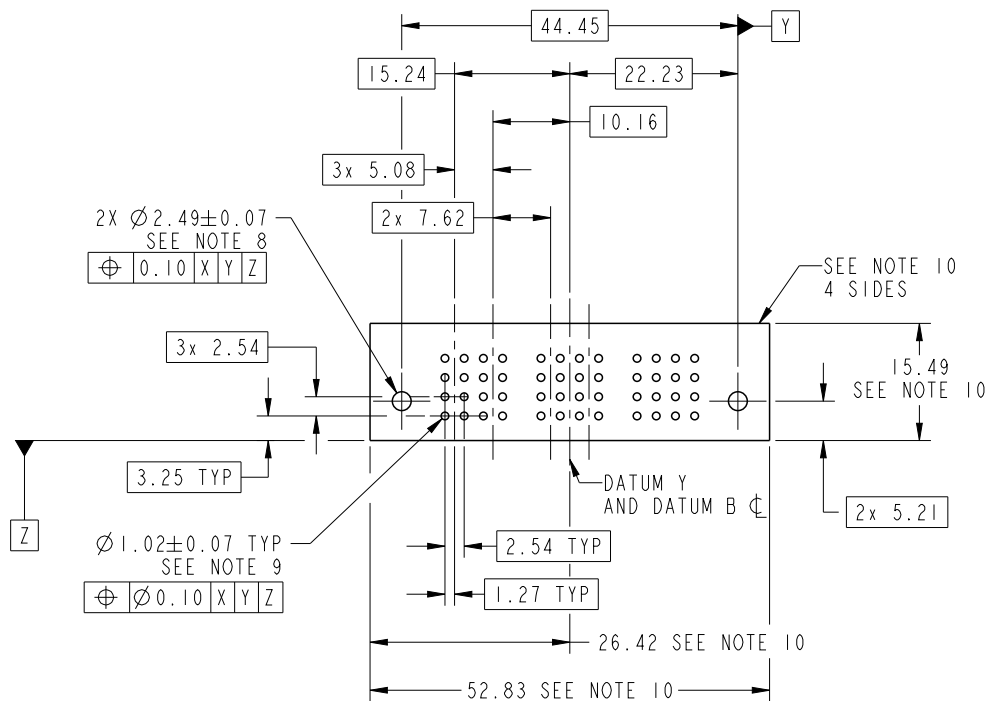


dr	Ruan MT	2014/05/26	<div>projection</div> <div></div>	<div>MM</div> <div></div>	size	A4	scale	1:1	
eng	De-Ming Lu	2014/06/05			ecn no	-			
chr	-	-			rel level	Released			
appr	Pei-Ming Zheng	2014/06/05	product family		PwrBlade				
		title			6P	dwg no		rev	
					VERTICAL SOLDER RECEPT	51940-537		A	
www.fci.com		cat. no.		*	Product - Customer Drw			sheet 2 of 4	

PrintE File - REV C - 2009-06-09

PRODUCT NUMBER

51940-537--  
NOTE: 3



RECOMMENDED PCB LAYOUT

dr	Ruan MT	2014/05/26	projection	MM	size	A4	scale	1:1
eng	De-Ming Lu	2014/06/05			ecn no	-		
chr	-	-			rel level	Released		
appr	Pei-Ming Zheng	2014/06/05	product family	PwrBlade				
FCI		title	6P	dwg no	51940-537	rev	A	
www.fci.com		cat. no.	*	Product - Customer Drw			sheet 3 of 4	



Copyright FCI.

PRODUCT NUMBER																																															
51940-537-- NOTE: 3																																															
NOTES:																																															
1. DIMENSIONS AND TOLERANCES ARE IN ACCORDANCE WITH ASME Y14.5M, 1994 UNLESS OTHERWISE SPECIFIED.																																															
CONNECTOR NOTES:																																															
2 HOUSING MATERIAL: UL 94 V-0 GLASS FILLED HIGH-TEMP THERMOPLASTIC POWER CONTACT MATERIAL: COPPER ALLOY SIGNAL PIN MATERIAL: COPPER ALLOY																																															
3. SEE ITEM 5 & 6 IN PRINT 10064183 FOR PLATING SPEC OF 51940-537 AND 51940-537LF RESPECTIVELY.																																															
4 MANUFACTURER'S NAME, DATE CODE AND OPTIONAL P/N TO APPEAR ON THIS SURFACE. THE MARK CAN BE OMITTED IF THERE IS NOT ENOUGH SPACE ON THIS SURFACE.																																															
5. PRODUCT SPECIFICATION GS-12-149. APPLICATION SPECIFICATION BUS-20-067.																																															
6. PACKAGED IN TRAYS.																																															
PCB NOTES:																																															
7. ALL HOLE DIAMETERS ARE FINISHED HOLE SIZE.																																															
8 MOUNTING HOLES, WHERE APPLICABLE, ARE UNPLATED.																																															
9 $\varnothing 1.151 \pm 0.025$ DRILLED HOLES PLATED WITH 0.008 MIN SnPb OR Sn OVER 0.03 TO 0.08 Cu PLATING TO ACHIEVE $\varnothing 1.02 \pm 0.07$ HOLE.																																															
10 CONNECTOR KEEP-OUT ZONE.																																															
11. THE VOID CORING IN BETWEEN POWER MODULES, SIGNAL MODULES AND END MODULES ARE OPTIONAL AND THE SHAPE MAY BE DIFFERENT FOR OPTIMIZE THE MOLDING PROCESS. THE VOID CORING WILL NOT EFFECT TO PRODUCT FUNCTION.																																															
<table border="1"><tr><td>dr</td><td>Ruan MT</td><td>2014/05/26</td><td rowspan="3"><div>projection</div></td><td rowspan="3"><div>MM</div></td><td>size</td><td>A4</td><td>scale</td><td>1:1</td></tr><tr><td>eng</td><td>De-Ming Lu</td><td>2014/06/05</td><td>ecn no</td><td>-</td></tr><tr><td>chr</td><td>-</td><td>-</td><td colspan="2"></td></tr><tr><td>appr</td><td>Pei-Ming Zheng</td><td>2014/06/05</td><td>product family</td><td>PwrBlade</td><td>rel level</td><td colspan="2">Released</td></tr><tr><td colspan="2"></td><td>title</td><td colspan="2">6P VERTICAL SOLDER RECEPT</td><td>dwg no</td><td colspan="2">51940-537</td><td>rev</td><td>A</td></tr><tr><td colspan="2">www.fci.com</td><td>cat. no.</td><td>*</td><td colspan="2">Product - Customer Drw</td><td colspan="3">sheet 4 of 4</td></tr></table>		dr	Ruan MT	2014/05/26	<div>projection</div>	<div>MM</div>	size	A4	scale	1:1	eng	De-Ming Lu	2014/06/05	ecn no	-	chr	-	-			appr	Pei-Ming Zheng	2014/06/05	product family	PwrBlade	rel level	Released				title	6P VERTICAL SOLDER RECEPT		dwg no	51940-537		rev	A	www.fci.com		cat. no.	*	Product - Customer Drw		sheet 4 of 4		
dr	Ruan MT	2014/05/26	<div>projection</div>	<div>MM</div>			size	A4	scale	1:1																																					
eng	De-Ming Lu	2014/06/05					ecn no	-																																							
chr	-	-																																													
appr	Pei-Ming Zheng	2014/06/05	product family	PwrBlade	rel level	Released																																									
		title	6P VERTICAL SOLDER RECEPT		dwg no	51940-537		rev	A																																						
www.fci.com		cat. no.	*	Product - Customer Drw		sheet 4 of 4																																									

PrintE File - REV C - 2009-06-09