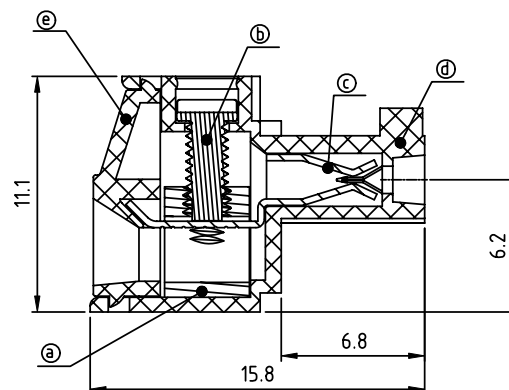
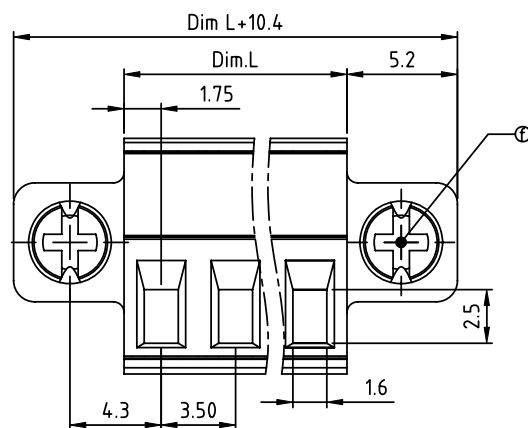
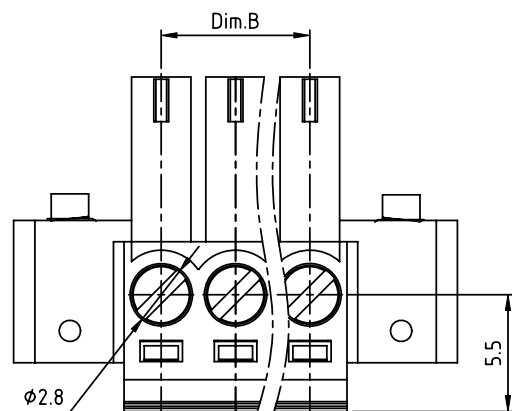


PRODUCT NUMBER

PITCH

TJxx11x200J0G

3.50 mm



Material

- Item ① Clamp: Brass(CuZn) Ni plated
- Item ② Terminal screw: Steel Zinc plating "-" slot type
- Item ③ Female contact: PhBz, Tin plated
- Item ④ Terminal (housing): Thermoplastic (UL94V-0)
- Item ⑤ Terminal (cover): Thermoplastic (UL94V-0)
- Item ⑥ With flange screw: steel M2.5 Zinc plating "+/-" slot type

Electrical cULus/VDE

- Voltage rating: 300VAC/300VAC
- Current rating: 10A/10.5A
- Wire range: 1.5mm²
- Solid wire(AWG): 16-28
- Stranded wire(AWG): 16-28
- Torque: 3.0Lb-In/0.2Nm
- Screw: M2
- Wire strip length: 6-7mm
- Withstanding Voltage: 1.6KV/2.5KV
- Operating temperature: -40°C to +115°C
- Safety Approval:

Dim.L = N x 3.5
 Dim.B = (N-1) x 3.5
 N= number of poles

| poles | 2P-6P | 7P-12P | 13P-18P | 19P-24P |
|-------|-------|--------|---------|---------|
| Dim.L | ±0.15 | ±0.20 | ±0.25 | ±0.30 |
| Dim.B | ±0.15 | ±0.20 | ±0.25 | ±0.30 |

PART NO.: TJ xx 1 1 x 2 00J0 G

No. of poles
 02 2 poles
 03 3 poles
 ...
 24 24 poles

Color
 0 Black (RAL9005)
 2 Red (RAL3001/D)
 3 Orange(RAL2011/P)
 4 Yellow(RAL1018/A)
 5 Green(RAL6018/T)
 6 Blue (RAL5015/A)
 8 Grey(RAL7035/D)
 9 White(RAL1102)
 C Green(RAL6018/U)

RoHS compliant
 (lead<4%)
 In copper Alloy

| mat'l. code | | | | surface | tolerance | projection | product family | |
|-------------|----------|----|----|---------|---------------------------------------|-------------------|-----------------------------|--|
| ltr | ecn | no | dr | date | ASME Y14.5 | ASME Y14.5 | TERMINAL BLOCK | |
| | | | | | tolerances unless otherwise specified | | | |
| | | | | | angles | X.±0.5 | title | |
| | | | | | flatness | X.X±0.3 | TERMINAL BLOCK | |
| | | | | | total feature | X.XX±0.1 | PLUGGABLE PLUG, WITH FLANGE | |
| | | | | | dr | HANKE FENG 031414 | scale | |
| | | | | | enrg | HANKE FENG 031414 | dwg no | |
| | | | | | chr | SHI JUN 031414 | sheet 1 of 1 | |
| | | | | | appd | SHI JUN 031414 | size | |
| | | | | | | | TJxx11x200J0G | |
| | | | | | | | type | |
| | | | | | | | CUSTOMER Drawing | |
| sheet index | revision | A | | | | | | |
| | sheet | 1 | | | | | | |