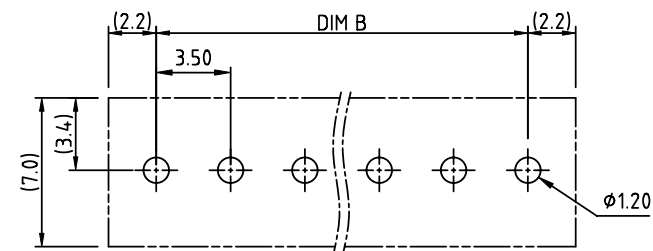
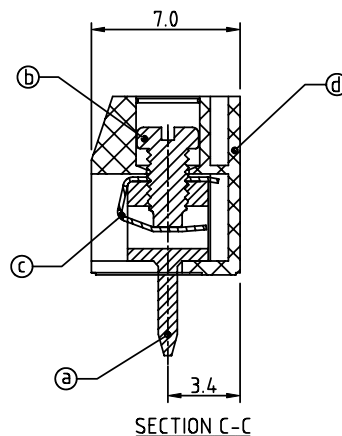
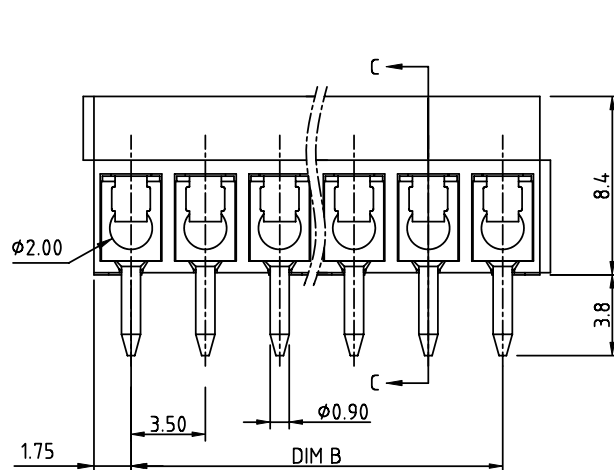
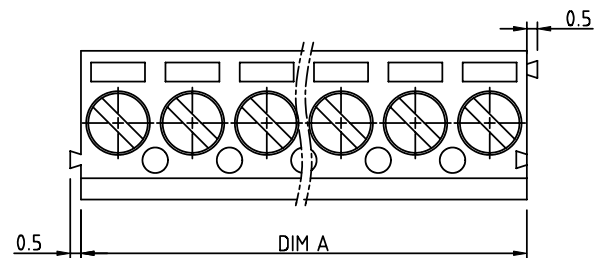


PRODUCT NUMBER	PITCH
TExx01x400J0G	3.50 mm



RECOMMENDED P.C.B LAYOUT  
TOP VIEW

#### Material:

- Item (a) Terminal body(metal housing): Brass(CuZn), Tin plated
- Item (b) Terminal screw: Steel Zinc plating "-" slot type
- Item (c) Wire guard :stainless steel
- Item (d) Insulator (housing): Thermoplastic (UL94V-0)

#### Electrical cULus

- Voltage rating: 125V
- Current rating: 10A
- Wire range:
- Solid wire(AWG): 16-26
- Stranded wire(AWG): 16-26
- Torque: 1.7Lb-In
- Screw: M2
- Wire strip length: 5-6mm
- Withstanding Voltage: 1.25KV
- Operating temperature: -40°C to +115°C
- Soldering temperature: 260°C±5°C/5 Sec
- Safety Approval: cULus

N = Number of poles  
Dim A=Nx3.5  
Dim B=(N-1)x3.5

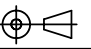
Poles	Tolerance
4p-6p	±0.10
7p-12p	±0.15
13p-18p	±0.20
19p-24p	±0.30

PART NO.: TE xx 0 1 x 4 00J0 G

Solid block  
No. of poles  
04 4 poles  
05 5 poles  
...  
24 24 poles

Body Color  
0 Black (RAL9005)  
2 Red (RAL3001/D)  
3 Orange(RAL2011/P)  
4 Yellow(RAL1018/A)  
5 Green(RAL6018/T)  
6 Blue (RAL5015/A)  
8 Grey(RAL7035/D)  
9 White(RAL1102)  
C Green(RAL6018/U)

RoHS compliant  
(lead<4%)  
In copper Alloy

mat'l. code				surface ASME Y14.5	tolerance ASME Y14.5	projection	product family
ltr	ecn	no	dr	date	tolerances unless otherwise specified		TERMINAL BLOCK
					angles	MM	title
					fillet		TERMINAL BLOCK
					X*±1"	scale	WIRE PROTECTOR,SOLID BLOCK,180D WIRE INLET
					dr	EVIN ZHONG	033114
					enr	EVIN ZHONG	033114
					chr	HANKE FENG	033114
					appd	SHI JUN	033114
sheet index	revision sheet	A	1				type
							CUSTOMER Drawing