

# AS39029 (FORMER MIL-C-39029) QPL LISTED CONTACTS



FOR HARSH ENVIRONMENTS  
WITH PATENTED REVERSED CLIP  
TECHNOLOGY



preci-dip

swiss world connects



# REVERSED-CLIP SOCKET CONTACT TECHNOLOGY

## CONTACT DESIGN

The contact consists of three parts, separately manufactured and made of different base materials. This design allows to optimise the performance and to select the most appropriate production process individually:

- Contact body made of machined brass
- Reversed-clip made of stamped and formed beryllium-copper
- Protection hood made of deep-drawn stainless steel

Separate electroplating processes of body and clip allow the best cost-performance ratio. The assembly of the three parts is then carried out on dedicated, fully automatic assembly lines.

Reversed-clip contacts are presently available in size 12, 16, 20 and 22. This proprietary technology, entirely developed by PRECI-DIP, is protected by international patents.

## ADVANTAGES AND CHARACTERISTICS

In comparison with the traditional slotted contact body, the reversed-clip design has several advantages:

- Smaller difference between insertion and extraction force
- Reduced dispersion of the force values
- Better redundancy at the level of the contact point, thanks to 6 or 8 contact fingers

We are also manufacturing the corresponding precision-machined pin contacts.

These contacts have successfully passed all the qualification tests according to AS39029 and are QPL listed.

## TECHNICAL SPECIFICATIONS

Operating temperature range from -65 to +200°C

### MATERIALS & PLATING

#### PIN CONTACT

• Material:	Machined brass C34500
• Overall finish:	Gold plated acc. to ASTM B488, Type II, C, min. 1.27 µm over 2.5 µm Ni
• Localized finish:	Contact area: Gold plated acc. to ASTM B488, Type II, C, min. 1.27 µm over 2.5 µm Ni Other surfaces: Gold plated acc. to ASTM B488, Type II, C, over 2.5 µm Ni

#### SOCKET CONTACT SLEEVE

• Material:	Machined brass C34500
• Overall finish:	Gold plated acc. to ASTM B488, Type II, C, over 2.5 µm Ni

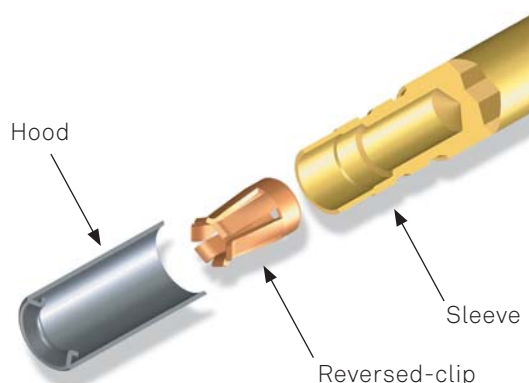
#### REVERSED CLIP

• Material:	BeCu C17200
• Overall finish:	Gold plated acc. to ASTM B488, Type II, C, min. 1.27 µm over 2.5 µm Ni

#### HOOD

• Material:	Corrosion-resistant steel
-------------	---------------------------

## EXPLODED VIEW OF SOCKET CONTACT



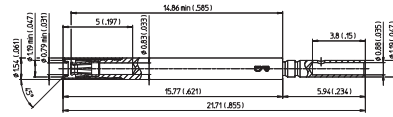
# AS39029 CONTACTS



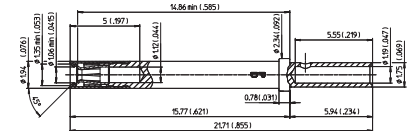
## SOCKET CONTACT FOR CONNECTOR TYPES :

- MIL-DTL-38999 SERIES I, III, IV

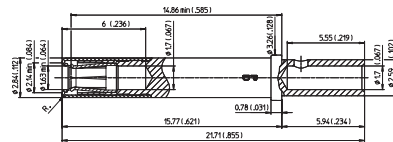
MILITARY P/N AS/M39029/56-348  
 PRECI-DIP P/N 83011-1P4-7010-B1  
 MATING END SIZE 22  
 WIRE BARREL SIZE 22D  
 COLOUR BANDS ORANGE, YELLOW, GREY



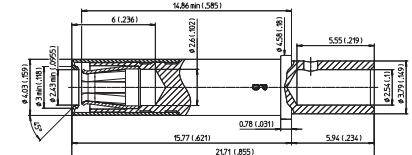
AS/M39029/56-351  
 83021-1P4-7110-B1  
 20  
 20  
 ORANGE, GREEN, BROWN



MILITARY P/N AS/M39029/56-352  
 PRECI-DIP P/N 83031-1P4-7210-B1  
 MATING END SIZE 16  
 WIRE BARREL SIZE 16  
 COLOUR BANDS ORANGE, GREEN, RED



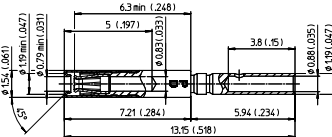
AS/M39029/56-353  
 83041-1P4-7310-B1  
 12  
 12  
 ORANGE, GREEN, ORANGE



## SOCKET CONTACT FOR CONNECTOR TYPES :

- MIL-DTL-38999 SERIES II
- MIL-DTL-24308 MIL-DTL-55302 MIL-DTL-83733

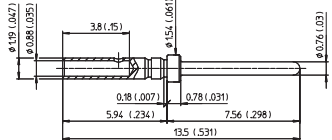
MILITARY P/N AS/M39029/57-354  
 PRECI-DIP P/N 83101-7Q4-7010-B1  
 MATING END SIZE 22  
 WIRE BARREL SIZE 22D  
 COLOUR BANDS ORANGE, GREEN, YELLOW



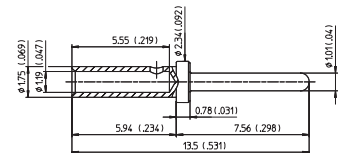
## PIN CONTACT FOR CONNECTOR TYPES :

- MIL-DTL-38999 SERIES I, II, III, IV
- MIL-DTL-24308 MIL-DTL-55302/69 MIL-DTL-83733

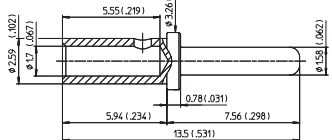
MILITARY P/N AS/M39029/58-360  
 PRECI-DIP P/N  
 • overall finish 82011-40-01  
 • localized finish 82011-7Q4-01  
 MATING END SIZE 22  
 WIRE BARREL SIZE 22D  
 COLOUR BANDS ORANGE, BLUE, BLACK



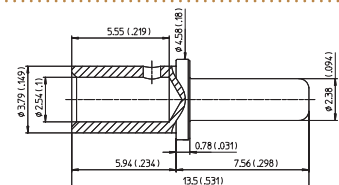
AS/M39029/58-363  
 82021-40-01  
 82021-7Q4-01  
 20  
 20  
 ORANGE, BLUE, ORANGE



MILITARY P/N AS/M39029/58-364  
 PRECI-DIP P/N  
 • overall finish 82031-40-01  
 • localized finish 82031-7Q4-01  
 MATING END SIZE 16  
 WIRE BARREL SIZE 16  
 COLOUR BANDS ORANGE, BLUE, YELLOW



AS/M39029/58-365  
 82041-40-01  
 82041-7Q4-01  
 12  
 12  
 ORANGE, BLUE, GREEN



# ENJOY THE BENEFITS



---

## HEADED FOR SUCCESS

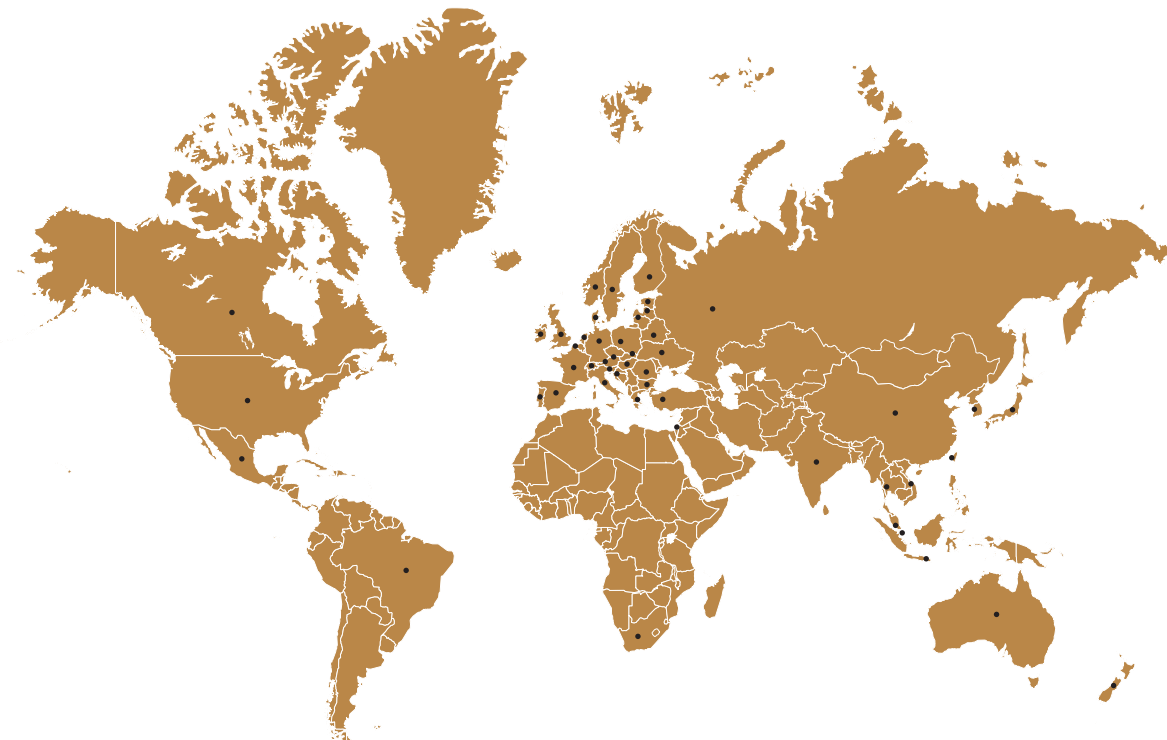
Awards from prestigious institutions and customers. Major certifications. World-wide recognition. For ongoing innovation, perfect teamwork, environmental responsibility as well as entrepreneurial excellence and sustained growth. In short, for swiss quality.

- Complete range of highly reliable interconnect components
- Diverse fields of application
- Effective management system
- In-house manufacturing –from raw material to finished product
- Highly skilled and motivated workforce
- Strong customer support
- Custom design
- Competitive pricing, flexibility and swiss quality
- Worldwide presence
- Prestigious client base

---

## AROUND THE WORLD

More than 100 Distributors around the world distribute precidip products across the five continents.



**[www.precidip.com](http://www.precidip.com)**