

PP Metal LC duplex SM GOF

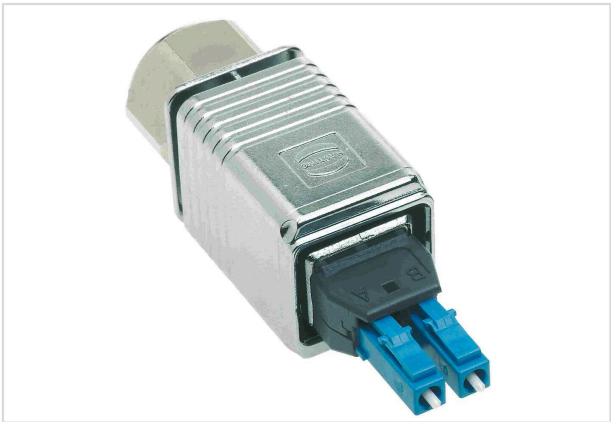


Image is for illustration purposes only. Please refer to product description.

Part number	09 57 409 0501 000
Specification	PP Metal LC duplex SM GOF
HARTING eCatalogue	https://harting.com/09574090501000

Identification

Category	Connectors
Series	HARTING PushPull (V4)
Identification	LC duplex
Element	Connector sets
Description of the contact	Singlemode

Version

Number of contacts	2
Locking type	PushPull

Technical characteristics

Limiting temperature	-40 ... +70 °C
Mating cycles	≥200
Degree of protection acc. to IEC 60529	IP65 IP67
Cable diameter	5.8 ... 7.2 mm

Material properties

Material (hood/housing)	Metal
Material flammability class acc. to UL 94	V-0
RoHS	compliant
ELV status	compliant
China RoHS	e



Pushing Performance
Since 1945

Material properties

REACH Annex XVII substances	Not contained
REACH ANNEX XIV substances	Not contained
REACH SVHC substances	Not contained
California Proposition 65 substances	Not contained

Specifications and approvals

Specifications	IEC 61076-3-106 Variant 4 (V4)
Approvals	DNV GL

Commercial data

Packaging size	10
Net weight	90.66 g
Country of origin	Romania
European customs tariff number	85366990
GTIN	5713140570634
eCl@ss	27440114 Rectangular connector (for field assembly)
ETIM	EC002636
UNSPSC 24.0	39121408