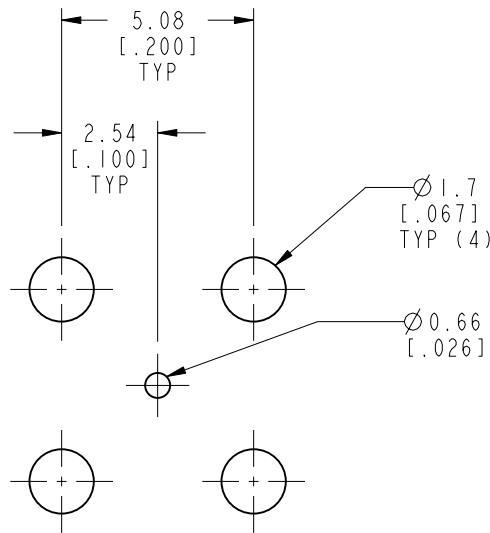
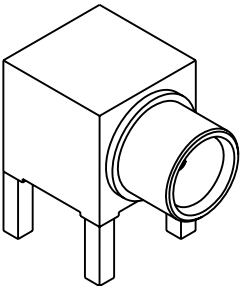
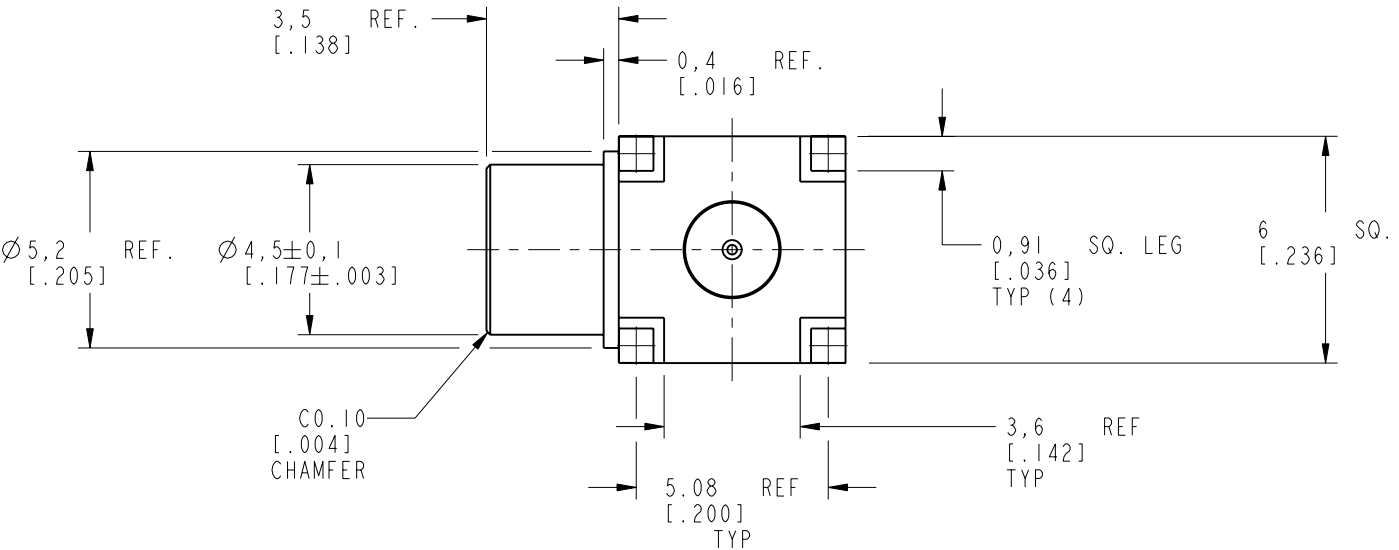
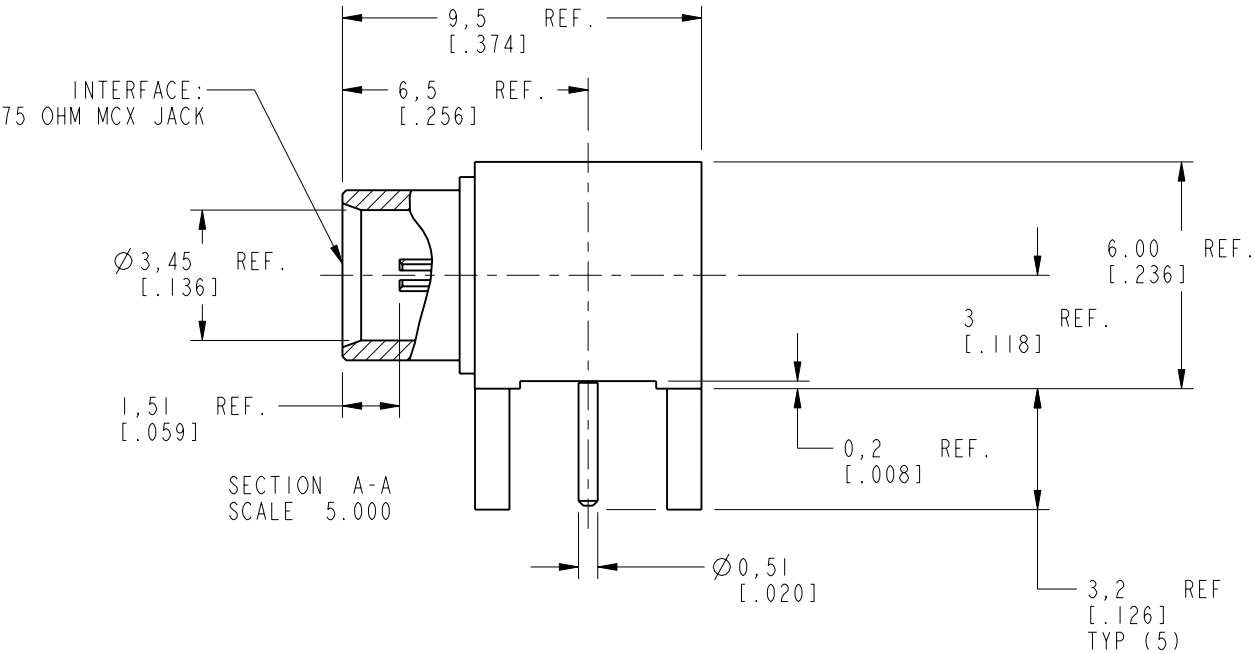
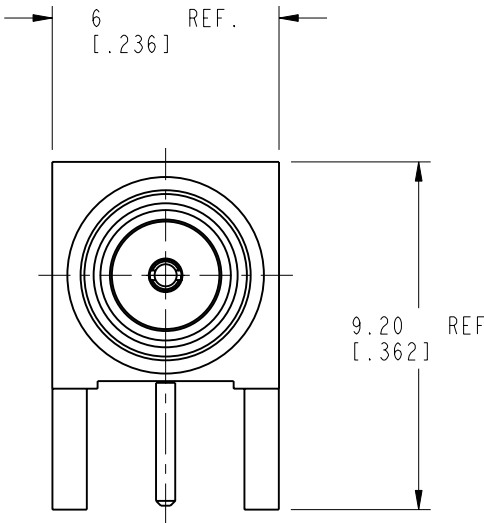


- NOTES:
1. MATERIALS AND FINISHES:
BODY - BRASS, GOLD PLATING .000030" THICK OVER NICKEL .000080" MIN.
CONTACT - BeCu, GOLD PLATING .000030" THICK OVER NICKEL .000080" MIN.
INSULATOR - PTFE
2. ELECTRICAL:
A. IMPEDANCE: 75 OHMS, NOMINAL
B. FREQUENCY RANGE: DC - 3 GHz
C. RETURN LOSS: -20 dB MAX. @ DC - 1.5 GHz
-15 dB MAX. @ 1.5 - 3 GHz
3. MECHANICAL:
A. DURABILITY: 500 CYCLES MIN.
B. TEMPERATURE RANGE: -65°C TO +165°C
C. MATING PIN DIAMETER: Ø0.48/0.53 [Ø.019"/.021"]
4. PACKAGING:
A. QUANTITY: SINGLE PACK
B. MARKING: BAG TO BE MARKED
"AMPHENOL, 919-300J-71A, AND DATE CODE"
5. THIS CONNECTOR IS NOT DESIGNED FOR REFLOW.



RECOMMENDED PCB
HOLE DIMENSIONS
SCALE 5.000



SCALE 3.000

CUSTOMER OUTLINE DRAWING
ALL OTHER SHEETS ARE FOR INTERNAL USE ONLY

UNLESS OTHERWISE SPECIFIED, DIMENSIONS ARE IN METRIC AND TOLERANCES ARE:
<0.5mm ± 0.05mm 0.5 - 6mm ±0.1mm 6 - 30mm ±0.2mm 30 - 120mm ± 0.3mm ANGLES ±1°

NOTICE - These drawings, specifications, or other data (1) are, and remain the property of Amphenol corp. (2) must be returned upon request; and (3) are confidential and not to be disclosed to any person other than those to whom they are given by Amphenol Corp. the furnishing of these drawings, specifications, or other data by Amphenol Corp., or to any other person to anyone for any purpose is not to be regarded by implicatioin or otherwise in any manner licensing, granting rights to permitting such holder or any other sperson to manufacture, use or sell any product, process or design, patented or otherwise, that may in any way be related to or disclosed by said drawings, specifications, or other data.

MATERIAL	-
REFERENCE	EAR # 4346 AND
CONFIGURATION LEVEL:	<input type="checkbox"/> <input type="checkbox"/> <input type="checkbox"/>
FINISH	

DRAWN	S.LI	DATE	15-Mar-11
ENGINEER	JIA YONG LI	DATE	23-Feb-11
APPROVED	S.HSIEH	DATE	22-Mar-11
CAD FILE			

TITLE	
75 OHM MCX R/A JACK PCB THRU HOLE	
SCALE: 8.0:1.0	SHEET 2 OF 2
DWG SIZE B	REV A

Amphenol RF	
www.amphenolrf.com	
DRAWING NO. 919-300J-71A	
ITEM NO. 919-300J-71A	
PART NO. 919-300J-71A	