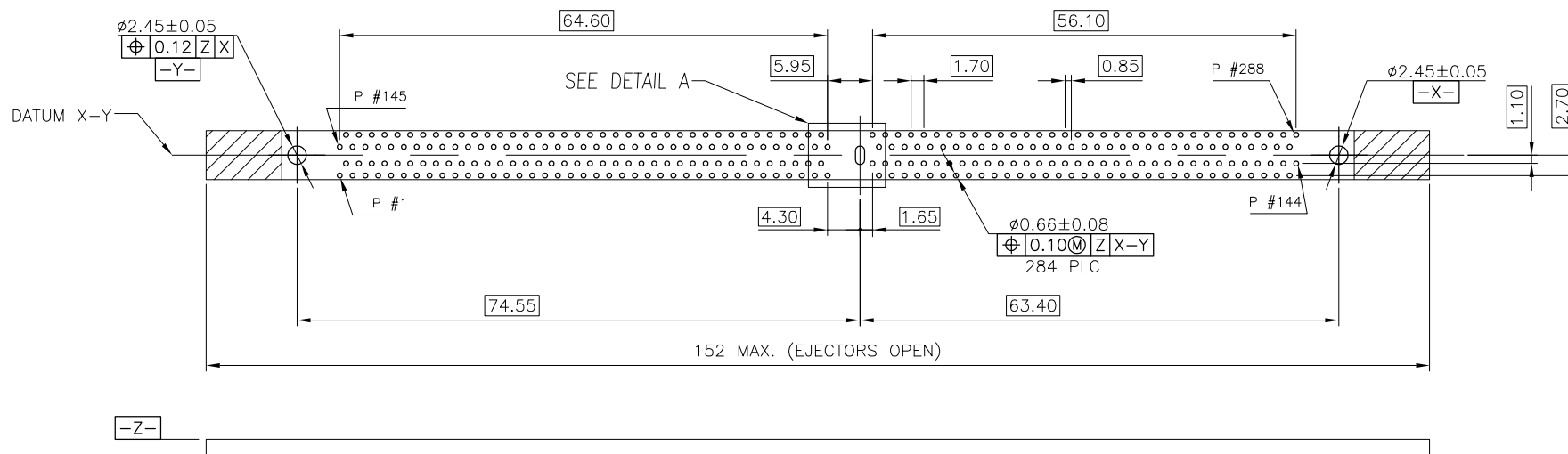
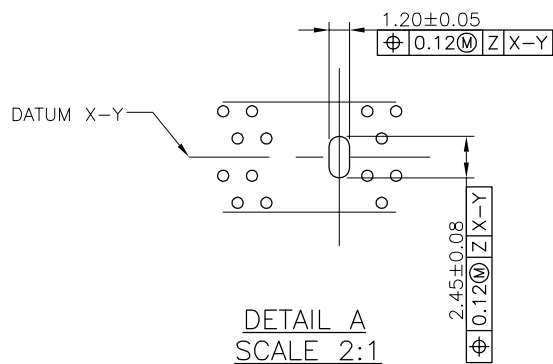
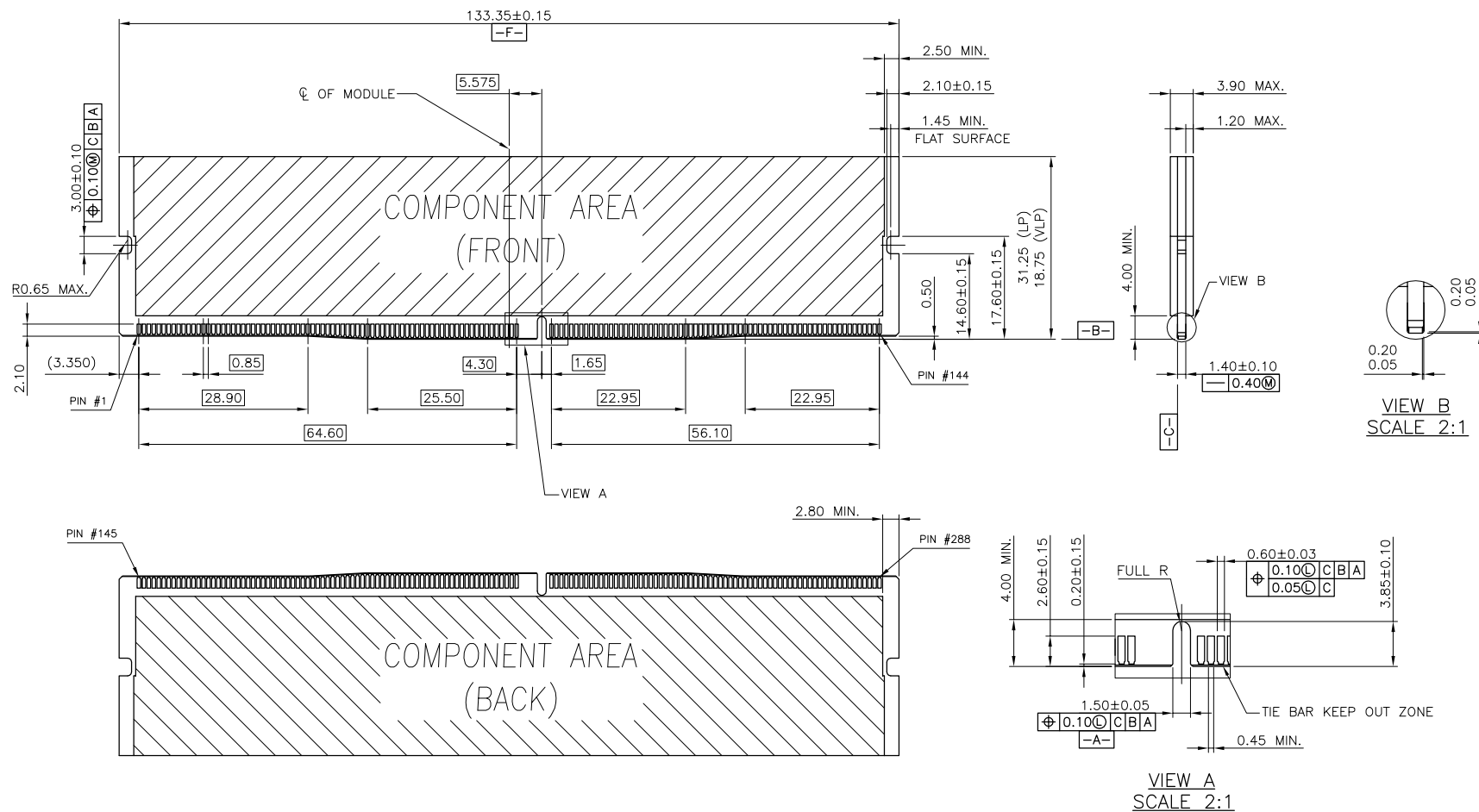



mat'l. code				surface	tolerance	projection	product family	
-				-	ASME_Y14.5		DDR	
ltr				tolerances unless otherwise specified			title	
ecn no				angles	.0±0.30	MM	DDR4_DIMM_0.85MM_PITCH	
dr				±2'	.00±0.20	scale N/A	MEMORY_SOCKET_T/H_TYPE	
date				dr	ZHENHUA_LIU	2017-03-22	dwg no	
				engr	ZHENHUA_LIU	2017-03-22	10143164	
				chr	NICKOR_ZUO	2017-03-22	sheet 1 of 5	
				appd	PM_ZHENG	2017-03-22	size	
sheet							A4	
index				revision	A		type	
				sheet			CUSTOMER Drawing	



RECOMMENDED PCB LAYOUT (TOP VIEW)

[illegible]



mat'l. code —					surface - ✓		tolerance ASME_Y14.5		projection 		product family DDR																																																																																																																																																																																																																																																																																																																																																																																																																																																																																																																																																																																																																																																																																																																																																																																																																																																																																																																																																																																																																																																																																																																																																																																																																																																																																																																																																																																																																																																																																																																																																																																																																																																																																																																																																																																																																																																																																																																																																																																																																																																																																																																																																																																																																																																																																																																																																																																																																																																																																																																																																										
lfr					ecn no					dr					date					tolerances unless otherwise specified										title																																																																																																																																																																																																																																																																																																																																																																																																																																																																																																																																																																																																																																																																																																																																																																																																																																																																																																																																																																																																																																																																																																																																																																																																																																																																																																																																																																																																																																																																																																																																																																																																																																																																																																																																																																																																																																																																																																																																																																																																																																																																																																																																																																																																																																																																																																																																																																																																																																																																																																																																							
																				angles					linear					.0±0.30					MM					DDR4_DIMM_0.85MM_PITCH																																																																																																																																																																																																																																																																																																																																																																																																																																																																																																																																																																																																																																																																																																																																																																																																																																																																																																																																																																																																																																																																																																																																																																																																																																																																																																																																																																																																																																																																																																																																																																																																																																																																																																																																																																																																																																																																																																																																																																																																																																																																																																																																																																																																																																																																																																																																																																																																																																																																																																																													
																									±2'					.00±0.20					scale N/A					MEMORY_SOCKET_T/H_TYPE																																																																																																																																																																																																																																																																																																																																																																																																																																																																																																																																																																																																																																																																																																																																																																																																																																																																																																																																																																																																																																																																																																																																																																																																																																																																																																																																																																																																																																																																																																																																																																																																																																																																																																																																																																																																																																																																																																																																																																																																																																																																																																																																																																																																																																																																																																																																																																																																																																																																																																																													
																														dr					ZHENHUA_LIU					2017-03-22					dwg no					sheet 3 of 5					size																																																																																																																																																																																																																																																																																																																																																																																																																																																																																																																																																																																																																																																																																																																																																																																																																																																																																																																																																																																																																																																																																																																																																																																																																																																																																																																																																																																																																																																																																																																																																																																																																																																																																																																																																																																																																																																																																																																																																																																																																																																																																																																																																																																																																																																																																																																																																																																																																																																																																																														
																																			enfr					ZHENHUA_LIU					2017-03-22					Amphenol FCi					10143164					A4																																																																																																																																																																																																																																																																																																																																																																																																																																																																																																																																																																																																																																																																																																																																																																																																																																																																																																																																																																																																																																																																																																																																																																																																																																																																																																																																																																																																																																																																																																																																																																																																																																																																																																																																																																																																																																																																																																																																																																																																																																																																																																																																																																																																																																																																																																																																																																																																																																																																																																									
																																			chr					NICKOR_ZUO					2017-03-22																																																																																																																																																																																																																																																																																																																																																																																																																																																																																																																																																																																																																																																																																																																																																																																																																																																																																																																																																																																																																																																																																																																																																																																																																																																																																																																																																																																																																																																																																																																																																																																																																																																																																																																																																																																																																																																																																																																																																																																																																																																																																																																																																																																																																																																																																																																																																																																																																																																																																																																								

NOTES:

1. MATERIAL :
 - 1.1 HOUSING: HIGH PERFORMANCE RESINS, GLASS FILBER, UL94 V-0, RATED.
 - 1.2 LATCH: HIGH PERFORMANCE RESINS, GLASS FILBER, UL94 V-0, RATED.
 - 1.3 CONTACTS: COPPER ALLOY.
 - 1.4 BOARDLOCKS: STAINLESS STEEL.
2. FINISH :
 - 2.1 CONTACT
 - 0.76um [30u"] GOLD PLATING ON THE CONTACT AREA.
 - 2.54um [100u"] MIN. MATTE-TIN PLATING ON THE SOLDERING AREA.
 - 1.27um [50u"] MIN. NICKEL UNDERPLATING OVERALL.
3. DATE CODE : YYWW
4. CHAMFER EDGE MUST BE FREE OF CUTTING BURRS.

PART NO.:

10143164 - D 30 4 1 1 3 LF

LATCH TYPE

D: DUAL LATCH

CONTACT AREA PLATING

30: 30u" GOLD

SOLDERTAIL LENGTH

Lead Free

PACKING OPTIONS
3: TRAYLATCH COLOR
1: BLACKHOUSING COLOR
1: BLACK

	DIM. A	DIM. G
3	3.50	4.32
4	4.50	5.32
5	4.00	5.32

mat'l. code -				surface - ✓	tolerance ASME_Y14.5	projection 	product family DDR			
ltr	ecn no	dr	date	tolerances unless otherwise specified			title			
				angles	.0±0.30	MM	DDR4_DIMM_0.85MM_PITCH			
				±2'	.00±0.20	scale N/A	MEMORY_SOCKET_T/H_TYPE			
				dr	ZHENHUA_LIU	2017-03-22	dwg no			
				enfr	ZHENHUA_LIU	2017-03-22	sheet 4 of 5			
				chr	NICKOR_ZUO	2017-03-22	10143164			
				appd	PM_ZHENG	2017-03-22	size			
sheet index		revision sheet	A				type			
							CUSTOMER Drawing			

NOTES :

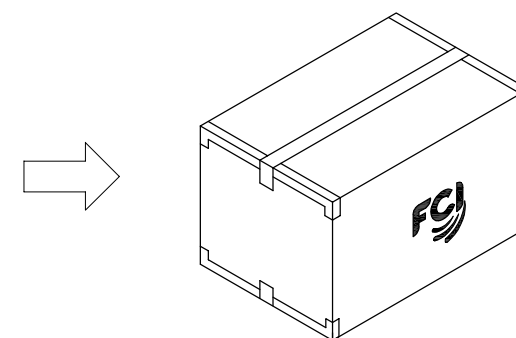
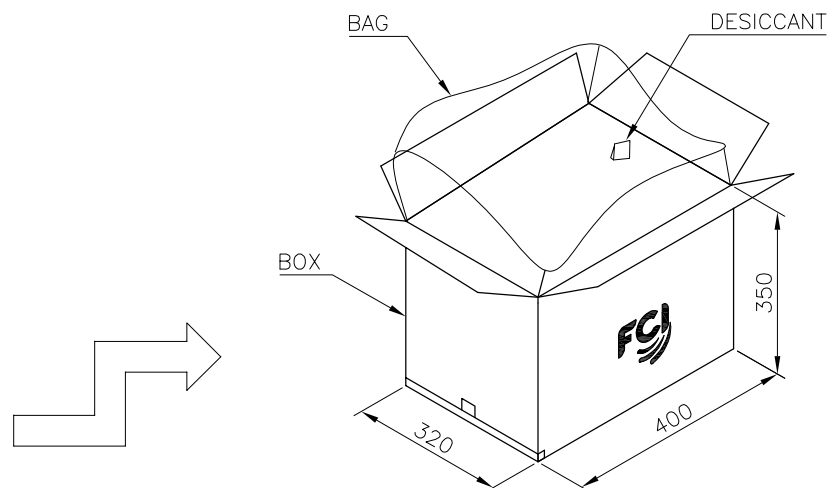
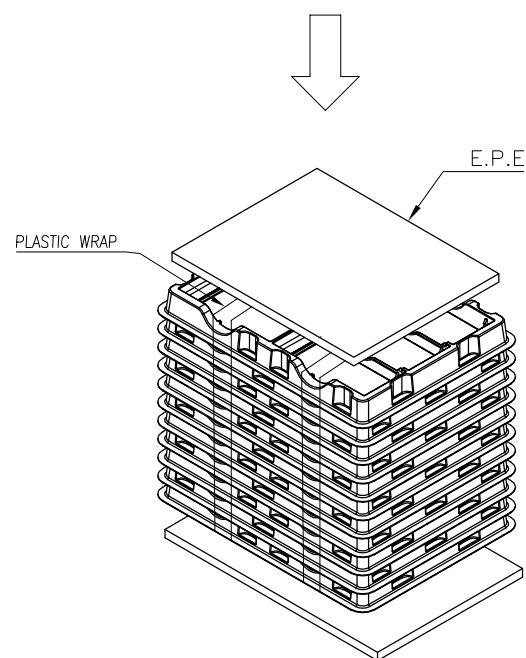
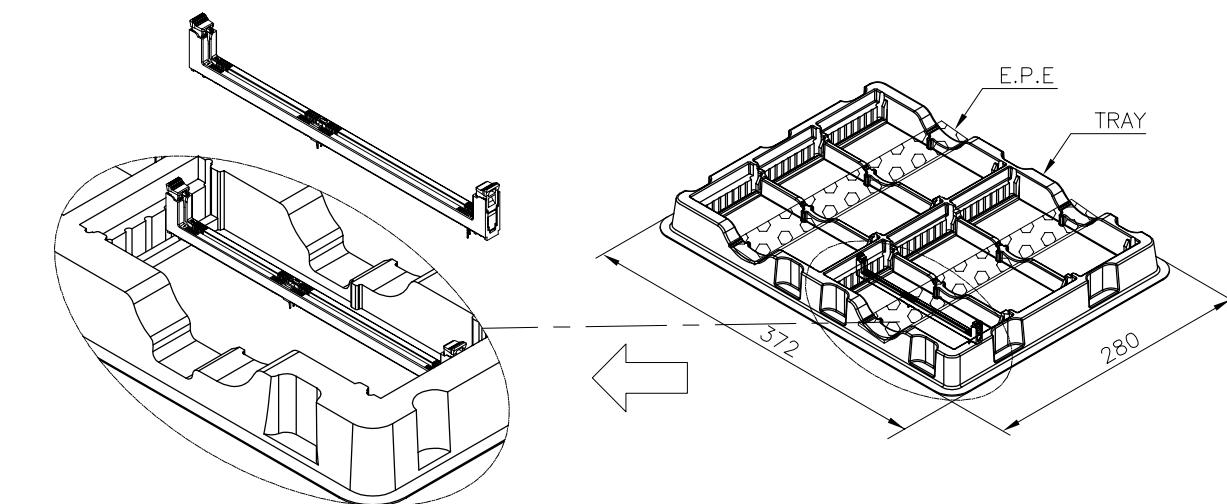
1. MATERIAL :

TRAY: PVC, COLOR: TRANSPARENT.

BOX: CORRUGATED FIBER

TRANSPARENT BAG: PE, SIZE: 600mm*450mm*0.06mm

PCS/ TRAY	TRAY/ BOX	PCS/ BOX	NET WEIGHT	GROSS WEIGHT
54	11	540	4.2 KG	7.2 KG



mat'l. code				surface	tolerance	projection	product family		
-				-	ASME_Y14.5		DDR		
ltr ecn no dr date				tolerances unless otherwise specified			title		
				angles	.0±0.30	MM	DDR4_DIMM_0.85MM_PITCH		
				linear	.00±0.20	scale N/A	MEMORY_SOCKET_T/H_TYPE		
				±2°	.000±0.10				
				dr	ZHENHUA_LIU 2017-03-22		dwg no		sheet 5 of 5 size
				engr	ZHENHUA_LIU 2017-03-22		10143164		A4
				chr	NICKOR_ZUO 2017-03-22				
				appd	PM_ZHENG 2017-03-22		type CUSTOMER Drawing		
sheet index	revision	A							