



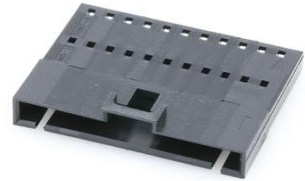
**Part Number :** [701070010](#)

**Product Description :** SL Wire-to-Wire Crimp Housing, Single Row, Version A, without Mounting Ears, 11 Circuits, Black

**Series Number :** 70107

**Status :** Active

**Product Category :** Connector Housings



---

## Documents and Resources

### Drawings

[701070010 sd.pdf](#)

[PK-70107-100-001.pdf](#)

### 3D Models and Design Files

[STEP AP242](#)

[SOLIDWORKS](#)

[Creo](#)


### Specifications

[PS-70400-001.pdf](#)

---

## Product Environment Compliance

### Compliance

GADSL/IMDS	Not Relevant
China RoHS	 per SJ/T 11365-2006
EU ELV	Not Relevant
Low-Halogen Status	Not Low-Halogen per IEC 61249-2-21
REACH SVHC	Not Contained per D(2025)6375-DC (05 Nov 2025)
EU RoHS	Compliant per EU 2015/863

### Compliance Statements

- EU RoHS

- REACH SVHC
- Low-Halogen

#### Industry Documents

- IPC 1752A Class C
- IPC 1752A Class D
- Molex Product Compliance Declaration
- IEC-62474
- chemSHERPA (xml)

#### Substances of Interest

- PFAS

#### EU RoHS Certificate of Compliance

#### Additional Product Compliance Information

---

## Part Details

### General

Status	Active
Category	Connector Housings
Series	70107
Description	SL Wire-to-Wire Crimp Housing, Single Row, Version A, without Mounting Ears, 11 Circuits, Black
Application	Signal, Wire-to-Wire
Comments	Version A without Mounting Ears
Product Name	SL
UPC	800754346375

### Agency

CSA	LR19980
UL	E29179

### Physical

Circuits (maximum)	11
Color - Resin	Black
Flammability	94V-0
Gender	Plug
Glow-Wire Capable	No
Lock to Mating Part	Yes

Material - Resin	Polyester
Net Weight	1.965/g
Number of Rows	1
Packaging Type	Bag
Panel Mount	No
Pitch - Mating Interface	2.54mm
Polarized to Mating Part	Yes
Stackable	No
Temperature Range - Operating	-40° to +105°C

---

## Mates With / Use With

### Mates with Part(s)

Description	Part Number
SL Single Row Crimp Housings and CPA Retainers	<u>70066</u>
SL Single Row Female Insulation Displacement Connector Assemblies	<u>70400</u>
SL Single Row Female Receptacles	<u>70430</u>

### Use with Part(s)

Description	Part Number
SL Male Terminals	<u>70021</u>

---

This document was generated on Jan 04, 2026