

## Data Sheet | Item Number: 811-314

2-conductor fuse holder ; for cylindrical fuses 10 x 38 mm; 13/32" x 1 1/2"; 1-pole; with blown fuse indication; 24 VDC; for DIN-rail 35 x 15 and 35 x 7.5; 16 mm<sup>2</sup>; CAGE CLAMP®; light gray

<https://www.wago.com/811-314>



Color: ■ light gray

Similar to illustration

Similar to illustration

### Fuse terminal block, 811 Series, operating tool

Connect conductors quickly and safely with this fuse terminal block (item number 811-314). Conductors should only be connected to this fuse terminal block if their strip length is between 12 and 13 mm. This product incorporates conductor terminals and utilizes CAGE CLAMP®. Our CAGE CLAMP® connection offers a safe and maintenance-free way to connect all types of conductors. You do not need to prepare the conductor in any way, such as crimping ferrules. Depending on the type of conductor, this fuse terminal block is suitable for conductor cross sections ranging from 2.5 mm<sup>2</sup> to 16 mm<sup>2</sup>.

### Notes

Safety Information

The fuse holder must not be opened under load.

### Electrical data

Ratings per	IEC/HD 60269-2		
Overtoltage category	III	III	II
Pollution degree	3	2	2
Nominal voltage	24 V	-	-
Rated impulse withstand voltage	8 kV	-	-
Rated current	32 A	-	-

### Ratings per IEC/EN – Notes

Ratings (note)	Electrical ratings are specified in the technical data of both fuse terminal block and fuse. When selecting glass cartridge fuses, make sure that the listed power loss is not exceeded.
----------------	--

### Approvals per

	UL 4248-19		
Use group	B	C	D
Rated voltage	-	-	-

### Approvals per

	CSA 22.2		
Use group	B	C	D
Rated voltage	-	-	-

### Power Loss

Maximum power loss $P_{loss}$ of fuse insert for overload and short-circuit protection (individual arrangement)	3 W
Maximum power loss $P_{loss}$ of fuse insert for overload and short-circuit protection (block arrangement)	3 W

### Power Loss

Maximum power loss $P_{loss}$ of fuse insert for short-circuit protection (individual arrangement)	3 W
Power loss $P_{loss}$ (max.) of fuse cartridge for short-circuit protection (block arrangement)	3 W

### General information

Voltage type 1	DC
Fuse receptacle	pluggable
Fuse type	Cylindrical fuse; 10 x 38 mm
Wiring direction	Side-entry wiring

### Connection Data

Clamping units	2
Total number of potentials	1
Number of levels	1

#### Connection 1

Connection technology	CAGE CLAMP®
Actuation type	Operating tool
Connectable conductor materials	Copper
Solid conductor	2.5 ... 16 mm <sup>2</sup> / 14 ... 6 AWG
Fine-stranded conductor	2.5 ... 16 mm <sup>2</sup> / 16 ... 6 AWG
Strip length	12 ... 13 mm / 0.47 ... 0.51 inches
Pole number	1
Wiring direction	Side-entry wiring

### Physical data

Width	17.5 mm / 0.689 inches
Height	105 mm / 4.134 inches
Depth from upper-edge of DIN-rail	55 mm / 2.165 inches

### Mechanical data

Mounting type	DIN-35 rail
Mounting (note)	The fixed foot of the fuse terminal block must face upwards so that the fuse cannot fall out.

### Material data

Note (material data)	<a href="#">Information on material specifications can be found here</a>
Color	light gray
Material group	I
Insulation material (main housing)	Polyamide (PA66)
Flammability class per UL94	V0
Fire load	0 MJ
Weight	63.5 g

### Environmental requirements

Processing temperature	-35 ... +85 °C
Continuous operating temperature	-35 ... +85 °C



**Commercial data**

Product Group	1 (Rail Mounted Terminal Blocks)
PU (SPU)	12 (1) pcs
Packaging type	Box
Country of origin	CN
GTIN	4055143101943
Customs tariff number	85369095000

**Product Classification**

UNSPSC	39121624
eCl@ss 10.0	27-14-11-16
eCl@ss 9.0	27-14-11-16
ETIM 9.0	EC002705
ETIM 10.0	EC002705
ECCN	NO US CLASSIFICATION

**Environmental Product Compliance**

RoHS Compliance Status	Compliant, No Exemption
------------------------	-------------------------

**Approvals / Certificates**

**Declarations of conformity and manufacturer's declarations**

Approval	Standard	Certificate Name
EU-Declaration of Conformity WAGO GmbH & Co. KG	-	-

**Downloads**

**Environmental Product Compliance**

Compliance Search	
Environmental Product Compliance 811-314	<a href="#">↓</a>

**Documentation**

Bid Text			
811-314	19.02.2019	xml 3.87 KB	<a href="#">↓</a>
811-314	14.03.2017	doc 26.50 KB	<a href="#">↓</a>

CAD/CAE-Data

CAD data	CAE data
2D/3D Models 811-314	EPLAN Data Portal 811-314
	WSCAD Universe 811-314
	ZUKEN Portal 811-314

1 Compatible Products

1.1 Optional Accessories

1.1.1 Ferrule

1.1.1.1 Ferrule



**Item No.: 216-545**  
Twin ferrule; Sleeve for 2 x 2.5 mm / AWG 14; insulated; blue

**Item No.: 216-546**  
Twin ferrule; Sleeve for 2 x 4 mm / AWG 12; insulated; gray

**Item No.: 216-547**  
Twin ferrule; Sleeve for 2 x 6 mm / AWG 10; insulated; yellow

1.1.2 Installation

1.1.2.1 Locking system



**Item No.: 811-612**  
Coupling kit; for 12 poles; red

1.1.3 Jumper

1.1.3.1 Jumper



**Item No.: 811-480**  
Jumper; 10-way; insulated; light gray

**Item No.: 811-481**  
Jumper; 11-way; insulated; light gray

**Item No.: 811-482**  
Jumper; 12-way; insulated; light gray

**Item No.: 811-472**  
Jumper; 2-way; insulated; light gray



**Item No.: 811-473**  
Jumper; 3-way; insulated; light gray

**Item No.: 811-474**  
Jumper; 4-way; insulated; light gray

**Item No.: 811-475**  
Jumper; 5-way; insulated; light gray

**Item No.: 811-476**  
Jumper; 6-way; insulated; light gray



**Item No.: 811-477**  
Jumper; 7-way; insulated; light gray

**Item No.: 811-478**  
Jumper; 8-way; insulated; light gray

**Item No.: 811-479**  
Jumper; 9-way; insulated; light gray

1.1.4 Marking

1.1.4.1 Marker



**Item No.: 793-5501/000-006**  
WMB marking card; as card; for terminal block width 5 - 17.5 mm; stretchable 5 - 5.2 mm; plain; snap-on type; blue



**Item No.: 793-5501/000-014**  
WMB marking card; as card; for terminal block width 5 - 17.5 mm; stretchable 5 - 5.2 mm; plain; snap-on type; brown



**Item No.: 793-5501/000-007**  
WMB marking card; as card; for terminal block width 5 - 17.5 mm; stretchable 5 - 5.2 mm; plain; snap-on type; gray



**Item No.: 793-5501/000-023**  
WMB marking card; as card; for terminal block width 5 - 17.5 mm; stretchable 5 - 5.2 mm; plain; snap-on type; green



**Item No.: 793-5501/000-017**  
WMB marking card; as card; for terminal block width 5 - 17.5 mm; stretchable 5 - 5.2 mm; plain; snap-on type; light green



**Item No.: 793-5501/000-012**  
WMB marking card; as card; for terminal block width 5 - 17.5 mm; stretchable 5 - 5.2 mm; plain; snap-on type; orange



**Item No.: 793-5501/000-005**  
WMB marking card; as card; for terminal block width 5 - 17.5 mm; stretchable 5 - 5.2 mm; plain; snap-on type; red



**Item No.: 793-5501/000-024**  
WMB marking card; as card; for terminal block width 5 - 17.5 mm; stretchable 5 - 5.2 mm; plain; snap-on type; violet



**Item No.: 793-5501**  
WMB marking card; as card; for terminal block width 5 - 17.5 mm; stretchable 5 - 5.2 mm; plain; snap-on type; white



**Item No.: 793-5501/000-002**  
WMB marking card; as card; for terminal block width 5 - 17.5 mm; stretchable 5 - 5.2 mm; plain; snap-on type; yellow



**Item No.: 793-501/000-006**  
WMB marking card; as card; not stretchable; plain; snap-on type; blue



**Item No.: 793-501/000-007**  
WMB marking card; as card; not stretchable; plain; snap-on type; gray



**Item No.: 793-501/000-023**  
WMB marking card; as card; not stretchable; plain; snap-on type; green



**Item No.: 793-501/000-017**  
WMB marking card; as card; not stretchable; plain; snap-on type; light green



**Item No.: 793-501/000-012**  
WMB marking card; as card; not stretchable; plain; snap-on type; orange



**Item No.: 793-501/000-005**  
WMB marking card; as card; not stretchable; plain; snap-on type; red



**Item No.: 793-501/000-024**  
WMB marking card; as card; not stretchable; plain; snap-on type; violet



**Item No.: 793-501**  
WMB marking card; as card; not stretchable; plain; snap-on type; white



**Item No.: 793-501/000-002**  
WMB marking card; as card; not stretchable; plain; snap-on type; yellow



**Item No.: 2009-115/000-006**  
WMB-Inline; for Smart Printer; 1500 pieces on roll; stretchable 5 - 5.2 mm; plain; snap-on type; blue



**Item No.: 2009-115/000-007**  
WMB-Inline; for Smart Printer; 1500 pieces on roll; stretchable 5 - 5.2 mm; plain; snap-on type; gray



**Item No.: 2009-115/000-023**  
WMB-Inline; for Smart Printer; 1500 pieces on roll; stretchable 5 - 5.2 mm; plain; snap-on type; green



**Item No.: 2009-115/000-017**  
WMB-Inline; for Smart Printer; 1500 pieces on roll; stretchable 5 - 5.2 mm; plain; snap-on type; light green



**Item No.: 2009-115/000-012**  
WMB-Inline; for Smart Printer; 1500 pieces on roll; stretchable 5 - 5.2 mm; plain; snap-on type; orange



**Item No.: 2009-115/000-005**  
WMB-Inline; for Smart Printer; 1500 pieces on roll; stretchable 5 - 5.2 mm; plain; snap-on type; red



**Item No.: 2009-115/000-024**  
WMB-Inline; for Smart Printer; 1500 pieces on roll; stretchable 5 - 5.2 mm; plain; snap-on type; violet



**Item No.: 2009-115**  
WMB-Inline; for Smart Printer; 1500 pieces on roll; stretchable 5 - 5.2 mm; plain; snap-on type; white



**Item No.: 2009-115/000-002**  
WMB-Inline; for Smart Printer; 1500 pieces on roll; stretchable 5 - 5.2 mm; plain; snap-on type; yellow

1.1.4.2 Marker carrier



**Item No.: 285-442**  
Adaptor; gray

### 1.1.5 Supply module

#### 1.1.5.1 Supply module



**Item No.: 811-471**

Supply module; 35 mm<sup>2</sup>; for 811 Series Fuse Terminal Blocks; SCREW CLAMP CONNECTION; 35,00 mm<sup>2</sup>; light gray

### Installation Notes

#### Installation



Creating a 2- or 3-pole fuse terminal block via coupling kit.

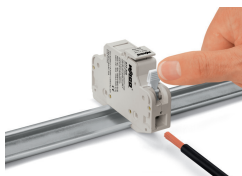


Removing a terminal block from the DIN-rail.

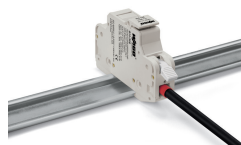
#### Conductor termination



Open and close lever via operating tool.



**CAGE CLAMP® connection**  
Inserting a conductor.  
Opening the clamping unit via integrated lever.



Terminating ferruled conductors up to 10 mm<sup>2</sup> (8 AWG).

#### Commoning

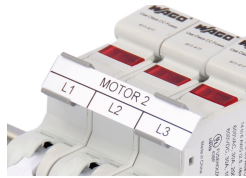


Jumper bar for quick and convenient commoning



Inserting a fuse.

Marking



WMB marker slot for convenient identification

Marker carriers (285-442) for continuous marking strips