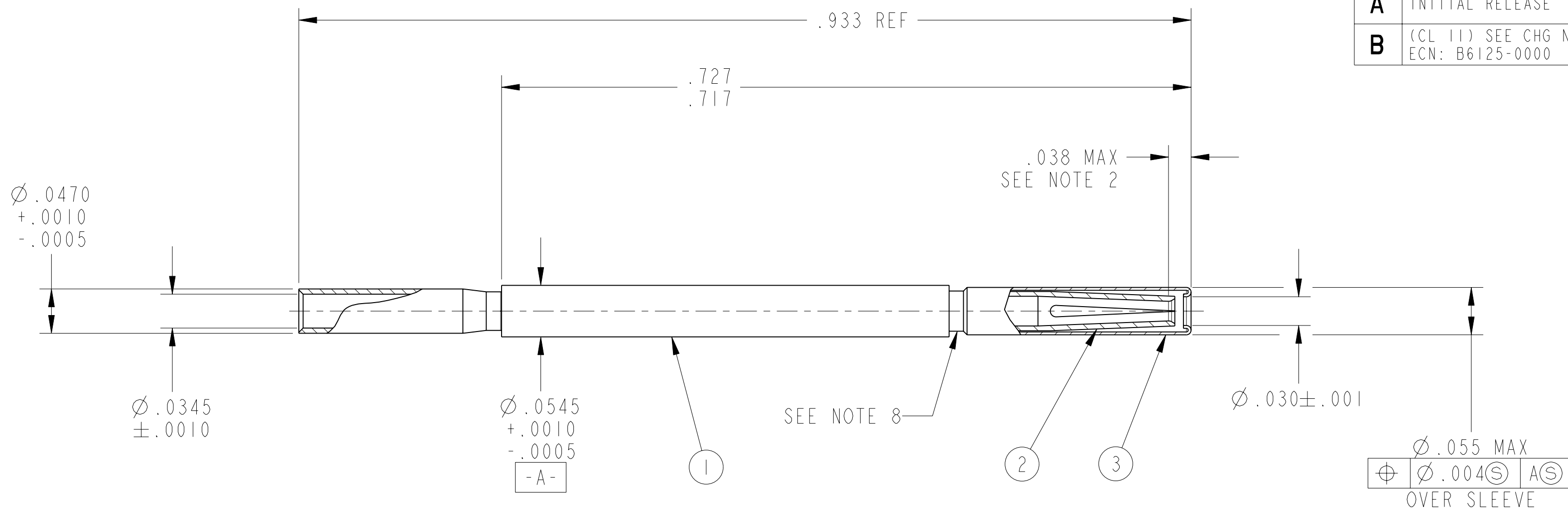


REV. B		SHEET 1 OF 1		DOCUMENT NO. 10-597894-651	
REVISIONS					
LTR	DESCRIPTION			DATE	
A	INITIAL RELEASE			3/5/13	
B	(CL 11) SEE CHG NOTICE ECN: B6125-0000			11/8/13	



8. CRIMP SLEEVE & SPRING TIGHTLY TO BODY PER 9-9383. A 10 POUND AXIAL LOAD SHALL NOT DISLODGE SPRING. SLEEVE SHALL WITHSTAND A .4 IN-OZ TORQUE WITHOUT SPINNING.
7. SPECIFIED GENERAL TOLERANCES;  

⊕	∅ .005
---	--------
6. REMOVED ON ECN: B6125-0000, REV B.
5. MEETS THE APPLICABLE REQUIREMENTS OF AS39029/17-172.
4. ALL DIMENSIONS ARE AFTER PLATING.
3. PROCESS SPEC:  
TEST 9-5367-1  
9-9383
2. INDICATED DIMENSION TO BE FROM SLEEVE FRONT TO POINT OF ENGAGEMENT OF SPRING AND A .0270 +/- .0002 DIA SQUARE ENDED PIN.
1. A .0275 +.0002 -.0000 DIA HARDENED STEEL PIN SHALL ENGAGE SOCKET WITH A FORCE NOT GREATER THAN 7.0 OZ. A .0265 +.0000 -.0002 DIA HARDENED STEEL PIN SHALL DISENGAGE SOCKET WITH A FORCE NOT LESS THAN 1 OZ. DEPTH OF ENGAGEMENT OF PINS SHALL BE .186 MIN. FROM FRONT OF CONTACT. PINS SHALL HAVE A SPHERICAL TIP AND A 3/ FINISH.

NOTES:

THE USE OF THIS DOCUMENT IS UNLIMITED. HOWEVER, DOCUMENTS REFERENCED HEREON MAY CONTAIN LIMITED RIGHTS DATA.

N/A  
NEXT ASSEMBLY

PRO/ENGINEER INFORMATION  
 Pro/e Model Used:  
 10-597894-651.ASSEM  
 Drawing Name:  
 10-597894-651

UNLESS OTHERWISE SPECIFIED

LINEAR DIMENSIONS ARE IN INCHES  
 TOLERANCES:  
 .XXXX = ±.0005 ANGLES= ±2°  
 .XXX = ±.010  
 .XX = ±.03  
 .X = ±.1

DIM. & TOL. PER ASME Y14.5M;  
 DRM PER MIL-DTL-31000;  
 OTHER Amphenol Stds. PER 9-3800

LEGENDS:  
 =FLAG NOTE CALL OUT REFERENCE ONLY

SPECIFICATIONS

MATERIAL SPEC.  
N/A

PROCESS SPEC.  
SEE NOTE 3

POS	QTY	PART NUMBER	DESCRIPTION	NOTE
3	1	10-807945-074	SLEEVE	
2	1	10-597898-735	SPRING	
1	1	10-597896-831	BODY	

APPROVALS	DATE
PREPARED BY RATCHFORD	27-Jan-10
ENGINEER IN CHARGE RATCHFORD	
DESIGN MANAGER SHEPLER	
DESIGN ACTIVITY GROUP MIL AERO	

THIRD ANGLE PROJECTION

PARTS LIST

**AMPHENOL CORPORATION**  
 40-60 DELAWARE AVENUE  
 SIDNEY, N.Y. 13858

**CONTACT, SOCKET, HYBRID, SIZE 23,  
 ELECTRICAL CONNECTOR,  
 TYPE D38999 HIGH DENSITY, HYBRID**

SIZE C	CAGE CODE 77820	DOCUMENT NO. 10-597894-651	REV. B
--------	-----------------	----------------------------	--------

SCALE: 10.0 REF: 10-597872-451 SHEET 1 OF 1  
 10-597330-735

10-597894-651 SHEET 1 OF 1 REV. B

REVISION I B Eng. PDM Information For Reference Only SHEET 1 OF 1 REV. B 10-597894-651