



Part Number : [50841020](#)

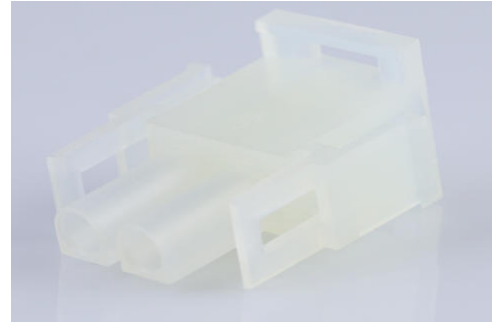
Product Description : 2.13mm Diameter MLX Power Crimp Housing Plug, 2 Circuits, Natural

Series Number : 42021

Status : Active

Product Category : Connector Housings

Engineering Part Number : 42021-2A



Documents and Resources

Drawings

[050841020_sd.pdf](#)

[PK-42021-XX-001.pdf](#)

3D Models and Design Files

[STEP AP242](#)

[SOLIDWORKS](#)

[Creo](#)


Specifications

[PS-42022-0001-001.pdf](#)

[TS-42022-0001-001.pdf](#)

Product Environment Compliance

Compliance

GADSL/IMDS	Not Relevant
China RoHS	 per SJ/T 11365-2006
EU ELV	Not Relevant
Low-Halogen Status	Low-Halogen per IEC 61249-2-21
REACH SVHC	Not Contained per D(2025)7771-DC (04 Feb 2026)
EU RoHS	Compliant per EU 2015/863

[Compliance Statements](#)

- EU RoHS

- REACH SVHC
- Low-Halogen

Industry Documents

- IPC 1752A Class C
- IPC 1752A Class D
- Molex Product Compliance Declaration
- IEC-62474
- chemSHERPA (xml)

Substances of Interest

- PFAS

EU RoHS Certificate of Compliance

Additional Product Compliance Information

Part Details

General

Status	Active
Category	Connector Housings
Series	42021
Description	2.13mm Diameter MLX Power Crimp Housing Plug, 2 Circuits, Natural
Application	Wire-to-Board, Wire-to-Wire
Comments	Glow Wire Equivalent Part Number 366430002; Maximum current per contact 20A if used with 36663 and 36664 terminal
Component Type	Housing
Product Name	MLX
UPC	800753577503

Agency

CSA	LR19980
UL	E29179

Physical

Circuits Detail	2
Circuits (maximum)	2

Color - Resin	Natural
Gender	Plug
Glow-Wire Capable	No
Keying to Mating Part	No
Lock to Mating Part	Yes
Material - Resin	Nylon
Net Weight	1.960/g
Number of Rows	1
Packaging Type	Bag
Panel Mount	No
Pitch - Mating Interface	6.35mm
Polarized to Mating Part	Yes
Stackable	No
Temperature Range - Operating	-55° to +105°C

Solder Process Data

Lead-Free Process Capability	N/A
------------------------------	-----

Mates With / Use With

Mates with Part(s)

Description	Part Number
6.35mm Pitch MLX Vertical Power Connector Headers	<u>42002</u>
2.13mm Diameter MLX Pin and Socket Receptacles	<u>42022</u>
MLX Vertical Power Connector Headers	<u>43255</u>
MLX Vertical Power Connector Headers	<u>36538</u>

Use with Part(s)

Description	Part Number
Pre-Crimped Lead MLX Male-to-MLX Male, Tin (Sn) Plating, 150.00mm Length, 18 AWG, Black	<u>797582029</u>

Pre-Crimped Lead MLX Male-to-MLX Male, Tin (Sn) Plating, 300.00mm Length, 18 AWG, Black	<u>797582030</u>
Pre-Crimped Lead MLX Female-to-MLX Female, Tin (Sn) Plating, 150.00mm Length, 18 AWG, Black	<u>797582031</u>
Pre-Crimped Lead MLX Female-to-MLX Female, Tin (Sn) Plating, 300.00mm Length, 18 AWG, Black	<u>797582032</u>
MLX Crimp Terminals	<u>36663</u>
MLX Female Terminals	<u>36664</u>
MLX Male Crimp Terminals	<u>42023</u>
MLX Female Crimp Terminals	<u>42024</u>

This document was generated on Jun 01, 2026