

PART NO.: H5 xx 7 0 x 2 00J0 G

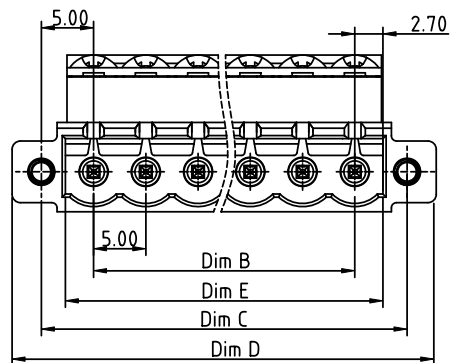
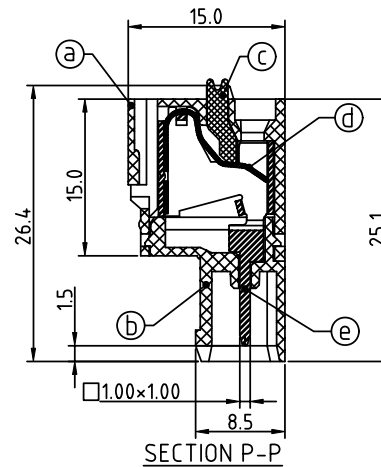
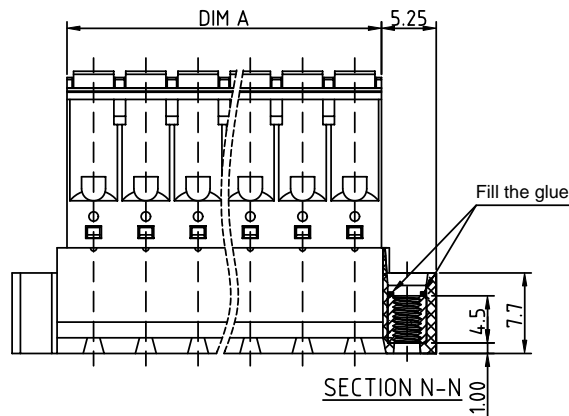
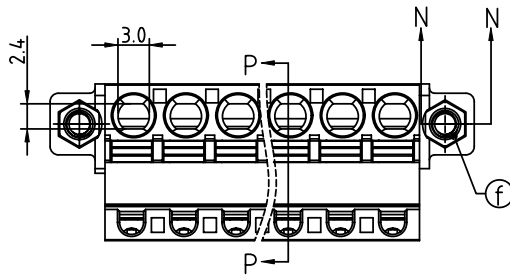
Solid block	0	Color	Black (RAL9005)	RoHS compliant
No. of poles	2		Red (RAL3001/D)	(lead<4%)
02 2 poles	3		Orange(RAL2011/P)	In copper Alloy
03 3 poles	4		Yellow(RAL1018/A)	
... ..	5		Green(RAL6018/T)	
24 24 poles	6		Blue (RAL5015/A)	
	8		Grey(RAL7035/D)	
	9		White(RAL1102)	
	C		Green(RAL6018/U)	

Dimension

DIM A	$N \times 5.0 + 0.10$
DIM B	$(N-1) \times 5.0$
DIM C	$(N-1) \times 5.0 + 10.0$
DIM D	$N \times 5.0 + 10.6$
DIM E	$N \times 5.0 + 0.4$

N=Number of poles

POLES	Tolerance
2p-6p	± 0.15
7p-12p	± 0.20
13p-16p	± 0.30
17p-24p	± 0.40




Material:

- Item a Top body: Thermoplastic (UL94V-0)
- Item b Bottom body: Thermoplastic (UL94V-0)
- Item c Terminal lever: Thermoplastic (UL94V-0) Orange (RAL2001/P)
- Item d Spring clamp: Stainless Steel
- Item e Male contact pin: PhBz (CuSn) Tin plated
- Item f Flange Nut; Brass M2.5

Electrical

- Voltage rating: 300V
- Current rating: 10A
- Solid wire(AWG): 12-26
- Stranded wire(AWG): 12-26
- Wire strip length: 9-10mm
- Withstanding Voltage: 1.6KV
- Operating temperature: -40°C to +115°C
- Safety Approval: cULus

cULus

mat'l. code				surface	tolerance	projection	product family		
				ASME Y14.5	ASME Y14.5		TERMINAL BLOCK		
ltr	ecn no	dr	date	tolerances unless otherwise specified			title		
				angles	$X \pm 0.5$	$\frac{b}{a}$	TERMINAL BLOCK SPRING CLAMP PLUGGABLE PLUG MALE CONNECTOR FLANGE WITH NUT		
				$X' \pm 1^\circ$	$X \pm 0.3$	$\frac{b}{a}$			
					$X.XX \pm 0.1$		dwg no		
				dr	EVIN ZHONG	051614	sheet 1 of 1 size		
				enr	EVIN ZHONG	051614	H5xx70x200J0G		
				chr	HANKE FENG	051614	A4		
				appd	SHI JUN	051614	type		
sheet index				revision	A		CUSTOMER Drawing		
				sheet	1				