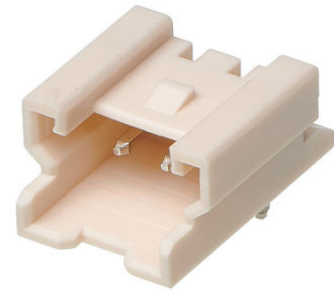




**Part Number :** [353630460](#)  
**Series Number :** 35363  
**Status :** Active - Proprietary  
**Product Category :** PCB Headers and Receptacles



---

## Drawings

[353630460 sd.pdf](#)

[353630460 stp.zip](#)

[Symbol and Footprint \(Multi-Format\)](#)


## Specifications

[PS-35507-001-001.pdf](#)

---

## Product Environment Compliance

### Compliance

GADSL/IMDS	Compliant with Exemption 12
China RoHS	 per SJ/T 11365-2006
EU ELV	Not Relevant
Low-Halogen Status	Low-Halogen per IEC 61249-2-21
REACH SVHC	Not Contained per D(2025)7771-DC (04 Feb 2026)
EU RoHS	Compliant per EU 2015/863

### Compliance Statements

- EU RoHS
- REACH SVHC
- Low-Halogen

### Industry Documents

- IPC 1752A Class C
- IPC 1752A Class D
- Molex Product Compliance Declaration
- IEC-62474
- chemSHERPA (xml)

## Substances of Interest

- PFAS

## EU RoHS Certificate of Compliance

## Additional Product Compliance Information

---

### Part Details

#### General

Status	Active - Proprietary
Category	PCB Headers and Receptacles
Series	35363
Description	2.00mm Pitch Sherlock Wire-to-Board Header, Right-Angle, with Positive Lock, 4 Circuits
Application	Wire-to-Board
Component Type	PCB Header
Product Name	Sherlock
UPC	822348260447

#### Agency

CSA	LR19980
UL	E29179

#### Electrical

Current - Maximum per Contact	2.0A
Voltage - Maximum	125V

#### Physical

Breakaway	No
Circuits (Loaded)	4
Circuits (maximum)	4
Color - Resin	Natural
Durability (mating cycles max)	30
First Mate / Last Break	No
Glow-Wire Capable	No
Guide to Mating Part	No

Keying to Mating Part	No
Lock to Mating Part	Yes
Material - Plating Mating	Tin
Material - Plating Termination	Tin
Material - Resin	Nylon
Net Weight	0.313/g
Number of Rows	1
Orientation	Right Angle
Packaging Type	Bag
PCB Locator	No
PCB Retention	Yes
PCB Thickness - Recommended	1.60mm
PC Tail Length	3.20mm
Pitch - Mating Interface	2.00mm
Polarized to Mating Part	Yes
Polarized to PCB	No
Shrouded	Partially Shrouded
Stackable	No
Temperature Range - Operating	-40° to +105°C
Termination Interface Style	Through Hole

---

## Mates With / Use With

### Mates with Part(s)

Description	Part Number
Sherlock Receptacle Housings	<u>35507</u>

---

This document was generated on Jun 02, 2026