



Part Number : 1731090130
Product Description : FCT Standard-Density D-Sub Connector, Female, Straight, PCB Through Hole, 10.30mm Tail Length, Gold Plating, 200 Mating Cycles, 50 Circuits, White Insulator
Series Number : 173109
Status : Active
Product Category : D-Sub Connectors
Engineering Number : F50S1G2

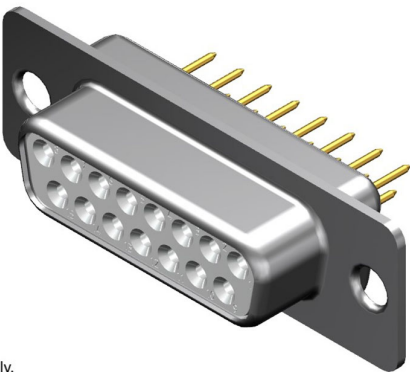



Illustration only.
The pole size may deviate from the image.

Documents & Resources

Drawings
[1731090130_sd.pdf](#)

Product Environment Compliance

Compliance

| | |
|--------------------|---|
| GADSL/IMDS | Not Relevant |
| China RoHS |  |
| EU ELV | Not Relevant |
| Low-Halogen Status | Not Reviewed per IEC 61249-2-21 |
| REACH SVHC | Not Reviewed per D(2024)7663-DC (21 Jan 2025) |
| EU RoHS | Compliant with Exemption 6(c) per EU 2015/863 |

Multiple Part Product Compliance Statements

- Eu RoHS
- REACH SVHC
- Low-Halogen

Multiple Part Industry Compliance Documents

- IPC 1752A Class C
- IPC 1752A Class D
- Molex Product Compliance Declaration
- IEC-62474

Part Details

General

| | |
|--------------|--|
| Status | Active |
| Category | D-Sub Connectors |
| Series | 173109 |
| Description | FCT Standard-Density D-Sub Connector, Female, Straight, PCB Through Hole, 10.30mm Tail Length, Gold Plating, 200 Mating Cycles, 50 Circuits, White Insulator |
| IP Rating | IP20 |
| Magnetic | Yes |
| Product Name | FCT Products |
| Type | Standard Density |
| UPC | 889056486125 |

Electrical

| | |
|-------------------------------|------|
| Current - Maximum per Contact | 7.5A |
| Shielded | Yes |

Physical

| | |
|--------------------|--------------|
| Circuits (Loaded) | 50 |
| Circuits (maximum) | 50 |
| Color - Resin | White |
| Gender | Female |
| Material - Contact | Copper Alloy |
| Material - Resin | PBT |
| Material - Shell | Steel |
| Net Weight | 24.000/g |
| Number of Rows | 3 |
| Orientation | Straight |
| Packaging Type | Carton |
| Panel Mount | Rear |

| | |
|-------------------------------|------------------|
| Panel Mount Method | Flange |
| PC Tail Length | 10.30mm |
| PCB Locator | Yes |
| PCB Retention | Yes |
| PCB Thickness - Recommended | 1.60mm |
| Pitch - Mating Interface | 2.84mm |
| Pitch - Termination Interface | 2.84mm |
| Plating - Contact | Gold over Nickel |
| Plating - Shell | Tin |
| Polarized to Mating Part | Yes |
| Polarized to PCB | Yes |
| Ports | 1 |
| Temperature Range - Operating | -55° to +125°C |
| Termination Style | Through Hole |
| Waterproof / Dustproof | No |
| Waterproof / Dustproof Type | IP20 |

Mates With / Use With

Mates with Part(s)

| Description | Part Number |
|-------------|---|
| Mates With | FCT Standard-Density D-Sub, Size 5, 50 Position, Plug |

This document was generated on Apr 26, 2025