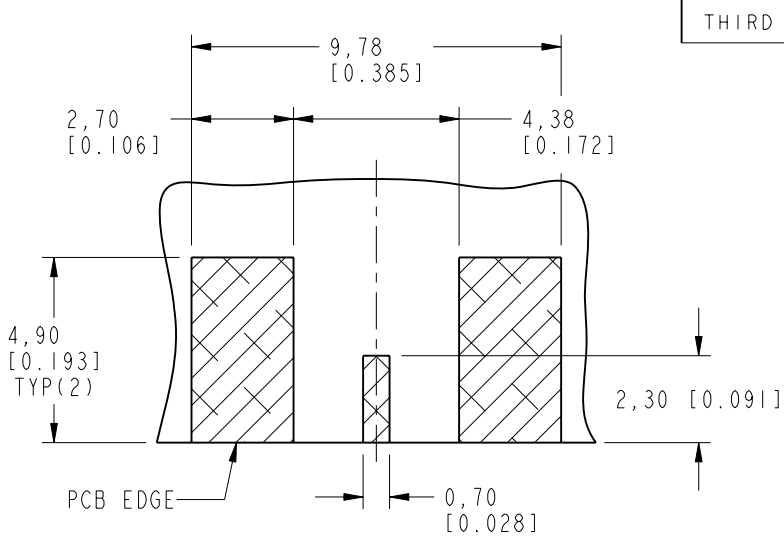
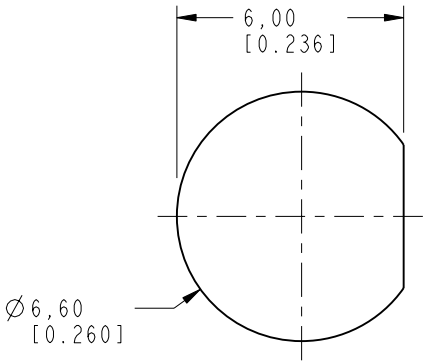


- NOTES:
- MATERIALS AND FINISHES:  
BODY - BRASS, GOLD PLATING  
CONTACT - BeCu, GOLD PLATING  
HEX NUT AND LOCKWASHER - BRASS, NICKEL PLATING  
INSULATOR - PTFE
  - ELECTRICAL:  
A. IMPEDANCE: 50 OHMS  
B. FREQUENCY RANGE: DC - 6 GHz
  - MECHANICAL:  
A. DURABILITY: 500 CYCLES MIN.
  - ENVIRONMENTAL:  
A. THERMAL SHOCK PER MIL-STD-202 METHOD 107  
TEST CONDITION B (EXCEPT HIGH TEMP @200 C)  
B. VIBRATION: MIL-STD-202 METHOD 204 TEST CONDITION B  
C. SHOCK: MIL-STD-202 METHOD 213 TEST CONDITION B  
D. CORROSION: MIL-STD-202 METHOD 101  
TEST CONDITION B 5% SALT SOLUTION
  - AMPHENOL SPANNER WRENCH 227-1490 REQUIRED TO MOUNT CONNECTOR TO PANEL.
  - PACKAGING:  
A. QUANTITY: SINGLE PACK  
B. MARKING: BAG TO BE MARKED  
"AMPHENOLRF, 34-5013 AND DATE CODE"

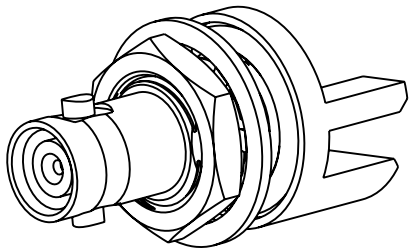


SCALE 6.000  
RECOMMENDED PCB  
DIMENSIONS

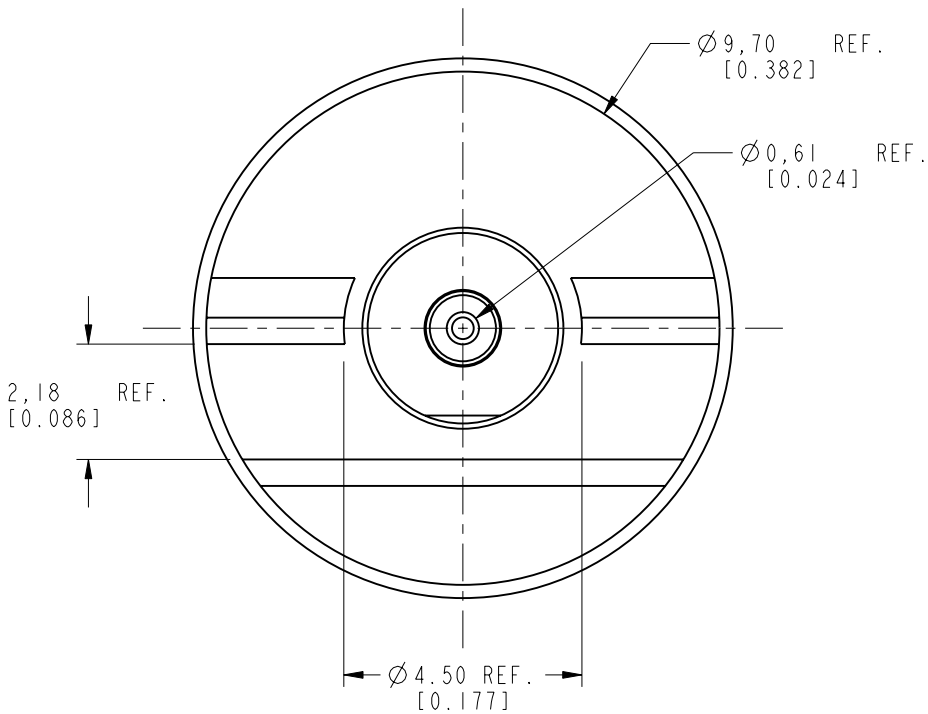
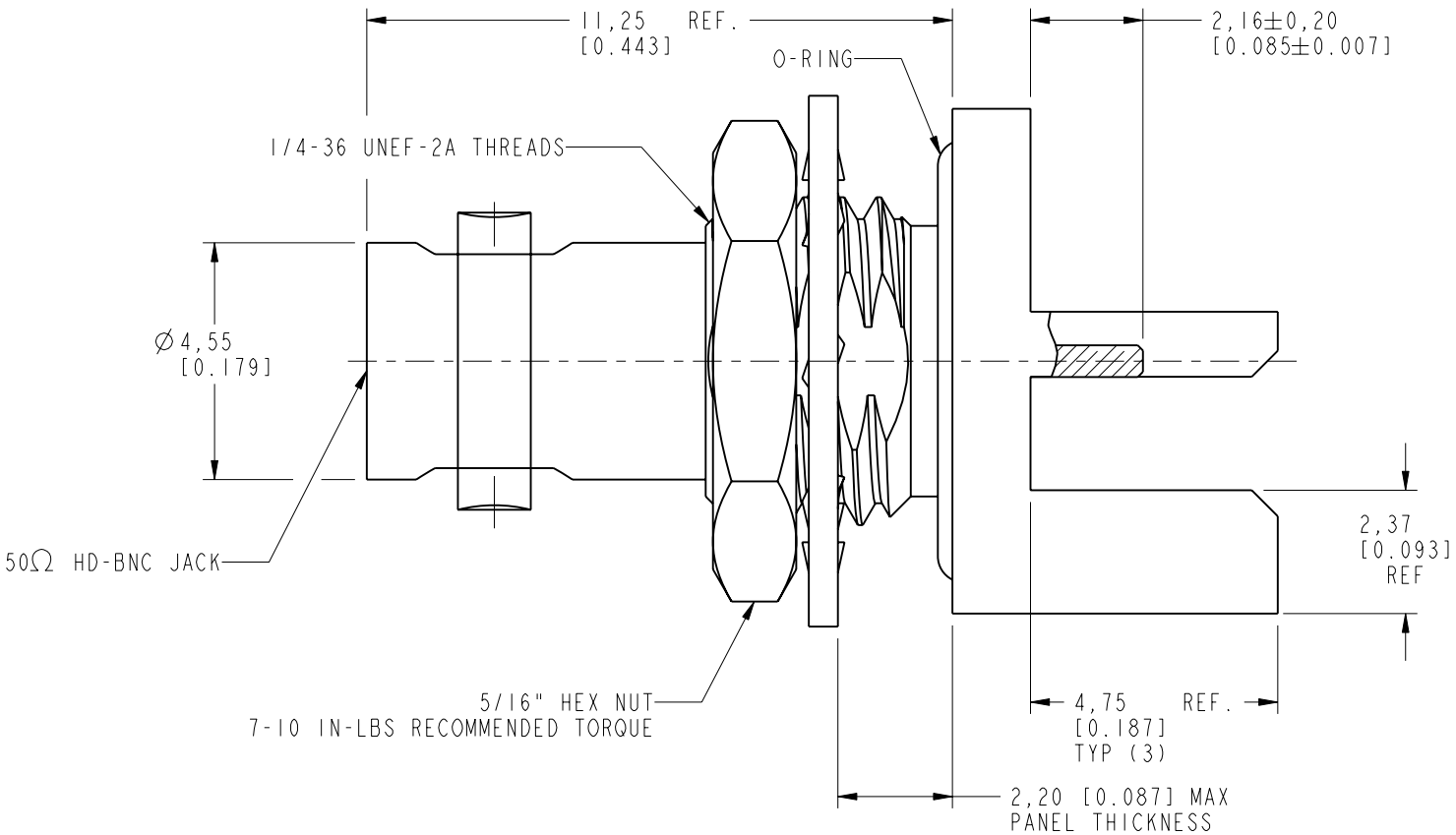
THIRD ANGLE PROJ.



SCALE 5.000  
RECOMMENDED MOUNTING HOLE  
DIMENSIONS



SCALE 3.000



CUSTOMER OUTLINE DRAWING  
ALL OTHER SHEETS ARE FOR INTERNAL USE ONLY

<div>UNLESS OTHERWISE SPECIFIED, DIMENSIONS ARE IN METRIC AND TOLERANCES ARE: &lt;0.5mm ± 0.05mm    0.5 - 6mm ± 0.1mm    6 - 30mm ± 0.2mm    30 - 120mm ± 0.3mm    ANGLES ± 1°</div> <div>NOTICE - These drawings, specifications, or other data (1) are, and remain the property of Amphenol corp. (2) must be returned upon request; and (3) are confidential and not to be disclosed to any person other than those to whom they are given by Amphenol Corp. the furnishing of these drawings, specifications, or other data by Amphenol Corp., or to any other person to anyone for any purpose is not to be regarded by implication or otherwise in any manner licensing, granting rights to permitting such holder or any other person to manufacture, use or sell any product, process or design, patented or otherwise, that may in any way be related to or disclosed by said drawings, specifications, or other data.</div>	MATERIAL SEE NOTES	DRAWN R.MAO	DATE 13-Aug-12	TITLE 50 OHM HD BNC BHD JACK EDGE MOUNT FOR 0.080" THICK BOARD		Amphenol RF www.amphenolrf.com	
	REFERENCE EAR # 4505    AND	ENGINEER KARTHIK R	DATE 13-May-11				
	CONFIGURATION LEVEL: <input type="checkbox"/> <input type="checkbox"/> <input type="checkbox"/>	APPROVED S.HSIEH	DATE 13-Aug-12	SCALE: 9.0:1.0	SHEET 2 OF 2	DRAWING NO. 34-5013	ITEM NO. 34-5013
	FINISH	CAD FILE		DWG SIZE B	REV B	PART NO. 34-5013	