

LUMOTAST 25, illuminated pushbutton, flat bezel, threaded ring, housing, momentary contact function, 1 NO

DISCONTINUED


Description

The LUMOTAST 25 is compact, with a surface area of 25 mm x 25 mm, yet it provides a large actuating surface.

With **RAFI** Click fastening technology, elements can be front-mounted within seconds. Conventional fastening technology with a threaded ring is also available. The terminal is reverse-polarity-secure using a male quick connector with ribbon cable. Alternatively, you can use a plug-in socket for the PCB terminal. The integrated T1 lamp socket allows full surface illumination with LED.



technical data

> general

Collar shape	square
Operating temperature, min.	-25 °C
Operating temperature, max.	55 °C
Storage temperature, min.	-40 °C
Storage temperature, max.	80 °C
illuminated	Yes
Lamp socket	Bi-pin
Packaging	Box
Packaging unit	10 pcs.
net weight	5.7 g
Operating life	1,000,000 cycles
Degree of protection, front side, according to DIN EN 60529	IP65
Minimum order quantity (MOQ)	10 pcs.
RoHS compliant	Yes
REACH compliant	Yes
country of origin	HU

> mounting diameters

Outside dimension, length	25 mm
Outside dimension, width	25 mm
Mounting hole	16.2 mm
Mounting depth	30.7 mm
Installation height	7.1 mm

> mechanical data

direct links

> [RAFI eCatalog](#)

The information in this data sheet only contains general descriptions and / or performance features, which may not apply precisely as described to the respective application, and which may change due to further product enhancements. The technical data, illustrations and other information about our products are the mere results of individual technical testing. These descriptions and other product features are only binding if they expressly agreed upon at the time of the conclusion of a binding contract. In all other cases, we reserve the right to make technical changes as well as changes of availability. Pictures and other graphic illustrations are approximations only. All product names may be trademarks or brand names of the RAFI Group or any other sub-supplier of RAFI. The use of such by any third parties for their own purposes may infringe the rights of the respective entity holding those rights.

date: Jul 5, 2025 page: 1/3

RAFI GmbH & Co. KG

Ravensburger Str. 128-134
88276 Berg / Ravensburg
Germany
www.rafi-group.com,
info.headquarters@rafi-group.com

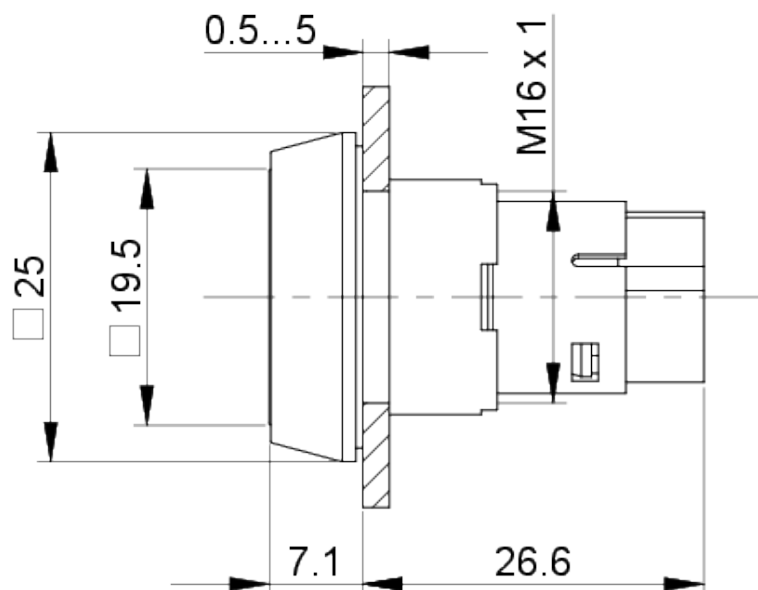
Actuation function	momentary contact function
Operating force, max.	6 N
Operating travel, max.	3 mm
Contact function	1 NO
Contact system	Snap-action contact
Contact material	Gold
Fixing	Threaded ring
Terminal on the rear	Male quick connector / plug-in socket

> electrical data

Rated voltage, min.	0.02 V
Rated voltage, max.	35 V
Rated current, min.	0.0001 A
Rated current, max.	0.1 A

drawings

Dimensioned drawing



Mounting hole drawing

