

Data Sheet | Item Number: 285-1171

Jumper; insulated; gray

<https://www.wago.com/285-1171>



Color: ■ gray

Electrical data

Ratings per IEC/EN

Rated current	309 A
---------------	-------

Physical data

Width	53.4 mm / 2.102 inches
Height	34.5 mm / 1.358 inches
Depth	48 mm / 1.89 inches
Jumper assignment	1-2

Material data

Note (material data)	Information on material specifications can be found here
Color	gray
Fire load	0 MJ
Weight	97 g

Commercial data

Product Group	1 (Rail Mounted Terminal Blocks)
PU (SPU)	25 (5) pcs
Packaging type	Box
Country of origin	DE
GTIN	4055143067003
Customs tariff number	85366990990

Product Classification	
UNSPSC	39121421
eCl@ss 10.0	27-14-11-40
eCl@ss 9.0	27-14-11-40
ETIM 9.0	EC000489
ETIM 10.0	EC000489
ECCN	NO US CLASSIFICATION

Environmental Product Compliance	
RoHS Compliance Status	Compliant, No Exemption

Approvals / Certificates

General approvals			Approvals for hazardous areas		
Approval	Standard	Certificate Name	Approval	Standard	Certificate Name
CSA CSA Group	C22.2	1151144	AEx Underwriters Laboratories Inc.	UL 60079	E185892 (AEx eb II C resp. Ex eb II C)

Downloads

Environmental Product Compliance	
Compliance Search	
Environmental Product Compliance 285-1171	↓

Documentation

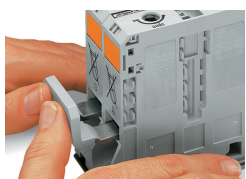
Bid Text			
285-1171	19.02.2019	xml 2.56 KB	↓
285-1171	04.01.2018	doc 22.50 KB	↓

CAD/CAE-Data

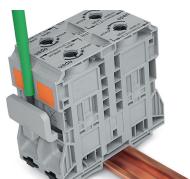
CAD data		CAE data	
2D/3D Models 285-1171	↓	EPLAN Data Portal 285-1171	↓
		ZUKEN Portal 285-1171	↓

Installation Notes

Commoning



Commoning with an adjacent jumper: insert the jumper above the conductor entry hole – prior to conductor termination. The nominal cross-section remains unchanged.



Removing jumper via operating tool.