



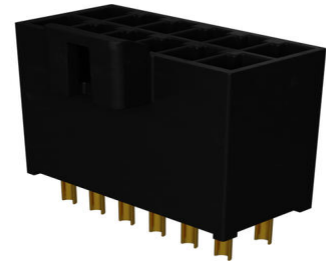
Part Number : [2248571121](#)

Product Description : Ultra-Fit Test Plug, Dual Row, 12 Circuits

Series Number : 224857

Status : Active

Product Category : PCB Headers and Receptacles



Documents and Resources

Drawings

[2248571121_sd.pdf](#)

[2248571000-PK-000.pdf](#)

3D Models and Design Files

[STEP AP242](#)

[SOLIDWORKS](#)


[Creo](#)

Specifications

[2248571000-PS-000.pdf](#)

Product Environment Compliance

Compliance

GADSL/IMDS	Not Relevant
China RoHS	 per SJ/T 11365-2006
EU ELV	Not Relevant
Low-Halogen Status	Low-Halogen per IEC 61249-2-21
REACH SVHC	Contains Lead per D(2025)7771-DC (04 Feb 2026)
EU RoHS	Compliant with Exemption 6(c) per EU 2015/863

Compliance Statements

- EU RoHS
- REACH SVHC

- Low-Halogen

Industry Documents

- IPC 1752A Class C
- IPC 1752A Class D
- Molex Product Compliance Declaration
- IEC-62474
- chemSHERPA (xml)

Substances of Interest

- PFAS

EU RoHS Certificate of Compliance

Additional Product Compliance Information

Part Details

General

Status	Active
Category	PCB Headers and Receptacles
Series	224857
Description	Ultra-Fit Test Plug, Dual Row, 12 Circuits
Application	Power, Wire-to-Board
Component Type	Test Plug
Product Name	Ultra-Fit
UPC	198282210658

Electrical

Current - Maximum per Contact	2.5A
Voltage - Maximum	600V AC (RMS)

Physical

Breakaway	No
Circuits (Loaded)	12
Circuits (maximum)	12
Color - Resin	Black
Durability (mating cycles max)	10000
First Mate / Last Break	No
Glow-Wire Capable	Yes

Lock to Mating Part	Yes
Material - Metal	Copper Alloy, Stainless Steel
Material - Plating Mating	Gold
Material - Plating Termination	Gold
Material - Resin	High Temperature Thermoplastic
Net Weight	6.050/g
Number of Rows	2
Orientation	Vertical
Packaging Type	Bag
PCB Locator	No
PCB Retention	No
PC Tail Length	4.30mm
Pitch - Mating Interface	3.50mm
Polarized to Mating Part	Yes
Polarized to PCB	No
Shrouded	Shrouded
Stackable	No
Temperature Range - Operating	-40° to +120°C
Termination Interface Style	Solder or Weld

Mates With / Use With

Mates with Part(s)

Description	Part Number
Ultra-Fit Tangless Single Row Receptacle Housings	<u>172256</u>
Ultra-Fit Tangless Dual Row Receptacle Housings	<u>172258</u>

This document was generated on Apr 23, 2026