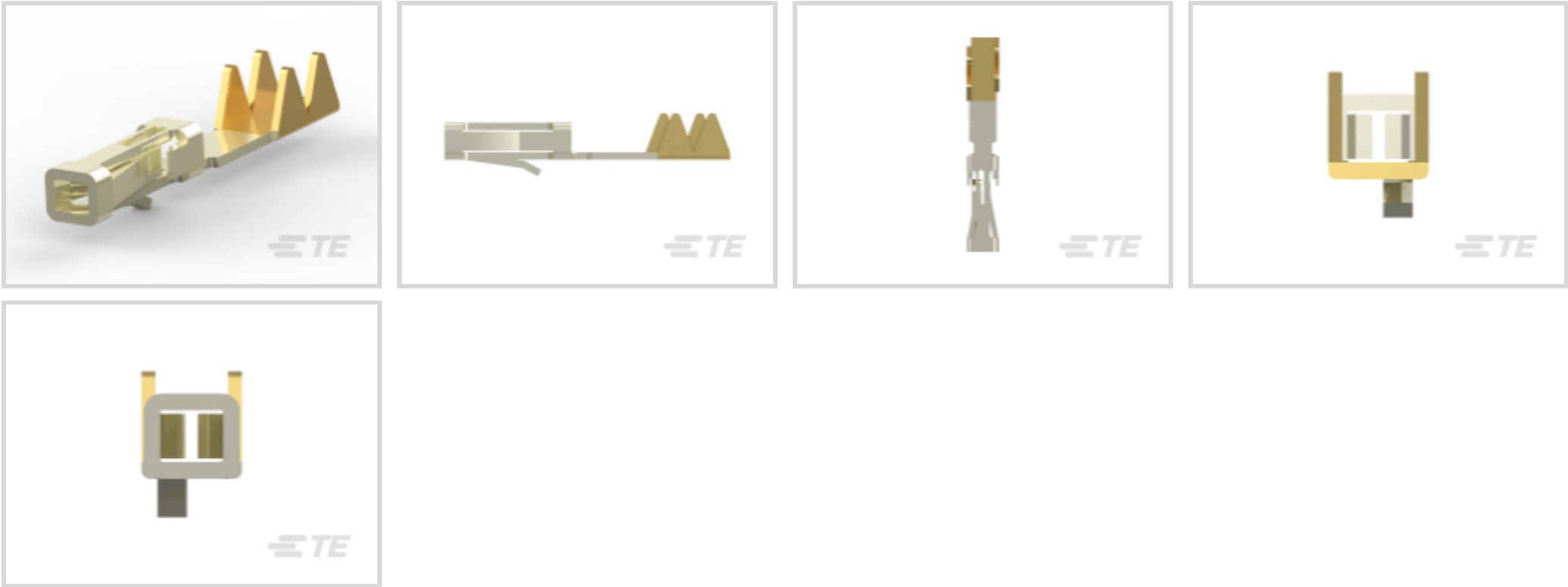




Connectors > Contacts > Connector Contacts > 2.54mm FFC Connectors Socket Contacts



Contact Type: **Socket**

Contact Mating Area Plating Material: **Gold Flash**

Compatible With Wire & Cable Type: **FFC**

Termination Method to Wire & Cable: **Insulation Displacement (IDC)**

Contact Base Material: **Phosphor Bronze**

[All 2.54mm FFC Connectors Socket Contacts \(33\)](#)

Features

Configuration Features

Compatible With Wire & Cable Type	FFC
-----------------------------------	-----

Contact Features

	30 µin
Contact Underplating Material	Nickel
PCB Contact Termination Area Plating Material	Gold Flash
Contact Type	Socket
Contact Mating Area Plating Material	Gold Flash
Contact Base Material	Phosphor Bronze
Contact Current Rating (Max)	2 A

Termination Features

Termination Method to Wire & Cable	Insulation Displacement (IDC)
Product Terminates To	Wire & Cable

Dimensions

--



Accepts Conductor Width	1.27 mm[.05 in]
-------------------------	-----------------

Usage Conditions

Operating Temperature Range	-65 – 105 °C[-85 – 221 °F]
-----------------------------	----------------------------

Operation/Application

Circuit Application	Signal
---------------------	--------

Packaging Features

Packaging Method	Reel
------------------	------

Product Compliance

For compliance documentation, visit the product page on [TE.com](#)>

EU RoHS Directive 2011/65/EU	Compliant
EU ELV Directive 2000/53/EC	Compliant
China RoHS 2 Directive MIIT Order No 32, 2016	有害物质含量符合标准要求 No Restricted Substance(s) Above Threshold
EU REACH Regulation (EC) No. 1907/2006	Current ECHA Candidate List: JUNE 2025 (250) Candidate List Declared Against: JUNE 2025 (250) Does not contain REACH SVHC
Halogen Content	Low Halogen - Br, Cl, F < 900 ppm per homogenous material. Also BFR/CFR/PVC Free
Solder Process Capability	Not applicable for solder process capability

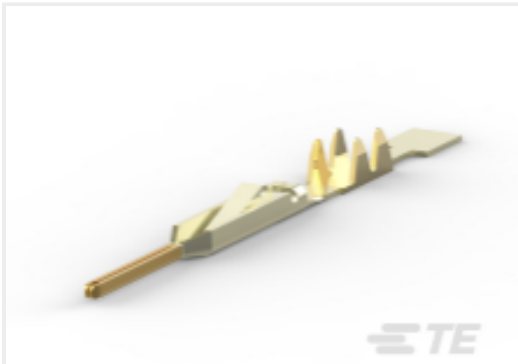
Product Compliance Disclaimer

This information is provided based on reasonable inquiry of our suppliers and represents our current actual knowledge based on the information they provided. This information is subject to change. The part numbers that TE has identified as EU RoHS compliant have a maximum concentration of 0.1% by weight in homogenous materials for lead, hexavalent chromium, mercury, PBB, PBDE, DBP, BBP, DEHP, DIBP, and 0.01% for cadmium, or qualify for an exemption to these limits as defined in the Annexes of Directive 2011/65/EU (RoHS2). Finished electrical and electronic equipment products will be CE marked as required by Directive 2011/65/EU. Components may not be CE marked. Additionally, the part numbers that TE has identified as EU ELV compliant have a maximum concentration of 0.1% by weight in homogenous materials for lead, hexavalent chromium, and mercury, and 0.01% for cadmium, or qualify for an exemption to these limits as defined in the Annexes of Directive 2000/53/EC (ELV). Regarding the REACH Regulation, the information TE provides on SVHC in articles for this part number is based on the latest European Chemicals Agency (ECHA) ‘Guidance on requirements for substances in articles’ posted at this URL: <https://echa.europa.eu/guidance-documents/guidance-on-reach>

Compatible Parts



TE Part # 1-487526-8
019 HOUSING FFC RCPT 100CL SR



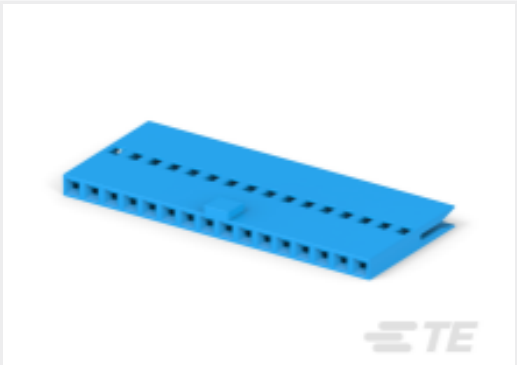
TE Part # 88117-9
FFC PIN CONT 15AU RL



TE Part # CAT-F439-R2435254
2.54mm FFC Connectors Receptacle Housing



TE Part # 5-528441-5
APPLIC. FFC-MODU.100



TE Part # CAT-F439-S01339254
2.54mm FFC Connectors Socket Contacts

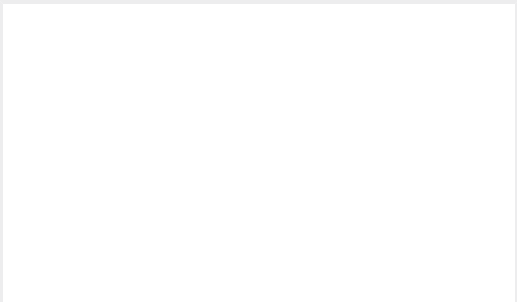


TE Part # 1-528013-1
FFC PISTOL GRIP HAND TOOL CASE



TE Part # 2475642-1
FFC 300 Tooling Kit for 487406

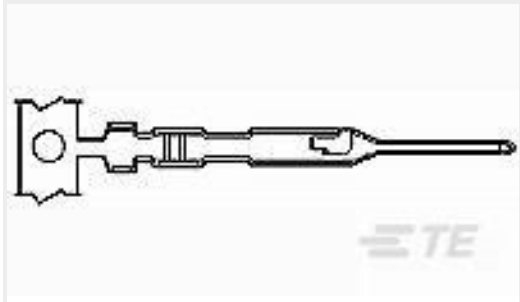
Customers Also Bought



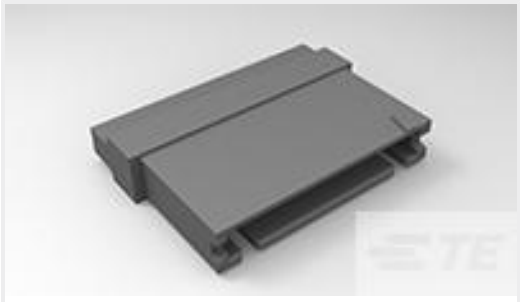
TE Part #BEA116M14000101000
923 RECEPTACLE, SPEEDTEC



TE Part #A57045-000
WP-165051-25-9



TE Part #5-104506-4
MTE PIN 28-32 AWG PLTD



TE Part #485893-8
010 HOUSING FFC PIN 100CL SR



TE Part #CAT-F439-R2435254
2.54mm FFC Connectors Receptacle Housing



TE Part #CAT-F439-P65127
FFC Connector Pin Contacts, 1.27 mm



TE Part #4-487937-0
040 HOUSING FFC 50CL DR LATCH



TE Part #2129261-1
PLUG ASSY 0.6mm CHAMP DOCKING

Documents

Product Drawings

FFC,RCPT CONTACT,STD PRESSURE

English

CAD Files

Customer View Model

ENG_CVM_CVM_2-487406-3_AV.2d_dxf.zip

English

3D PDF



3D

Customer View Model

[ENG_CVM_CVM_2-487406-3_AV.3d_igs.zip](#)

English

Customer View Model

[ENG_CVM_CVM_2-487406-3_AV.3d_stp.zip](#)

English

By downloading the CAD file I accept and agree to the [Terms and Conditions](#) of use.

Product Specifications

[Application Specification](#)

English

Instruction Sheets

[Instruction Sheet \(U.S.\)](#)

English

Extraction Tools

English