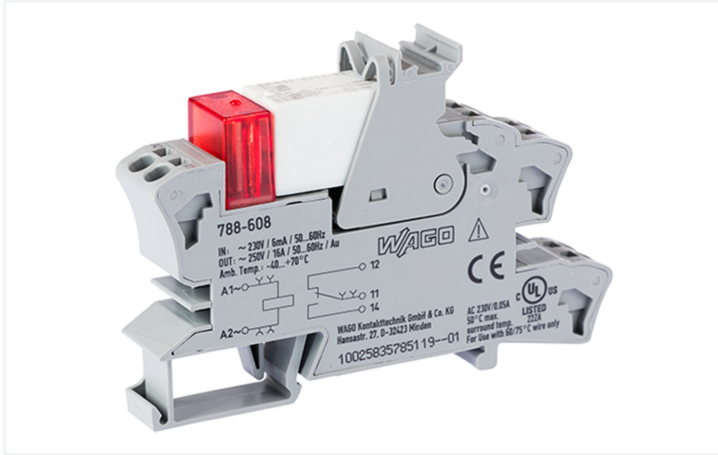


Data Sheet | Item Number: 788-608

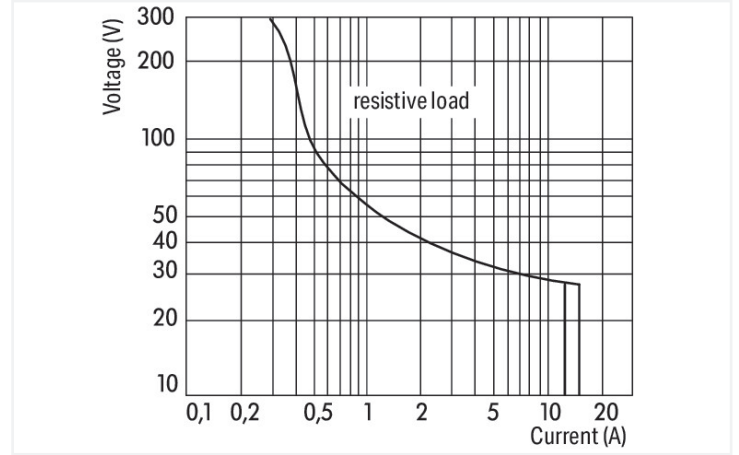
Relay module; Nominal input voltage: 230 VAC; 1 changeover contact; Limiting continuous current: 16 A; with gold contacts; Red status indicator; Module width: 15 mm; 2,50 mm²; gray



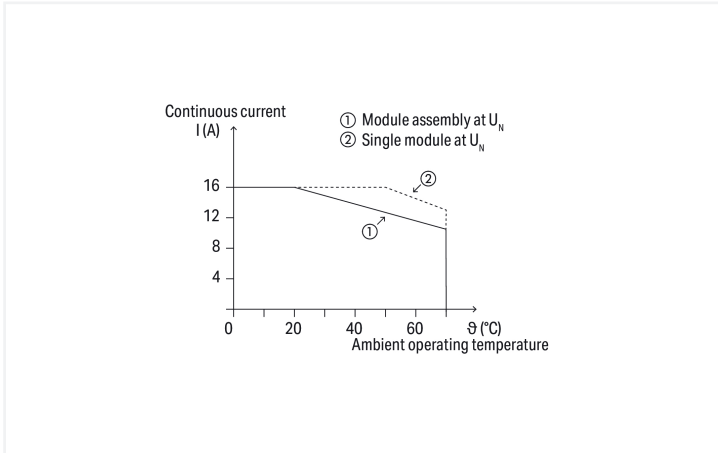
<https://www.wago.com/788-608>



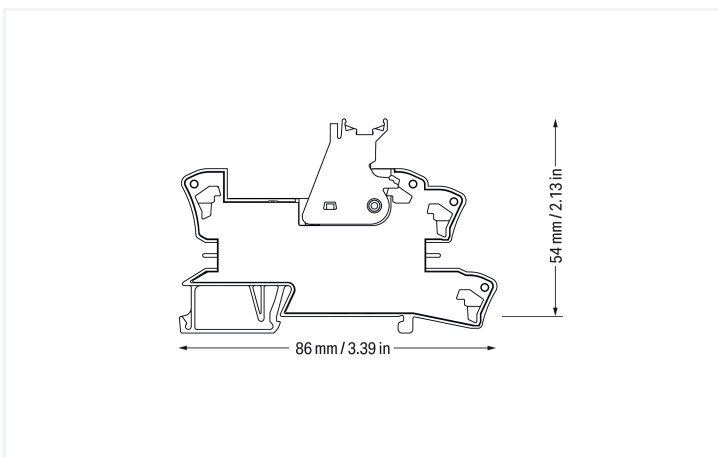
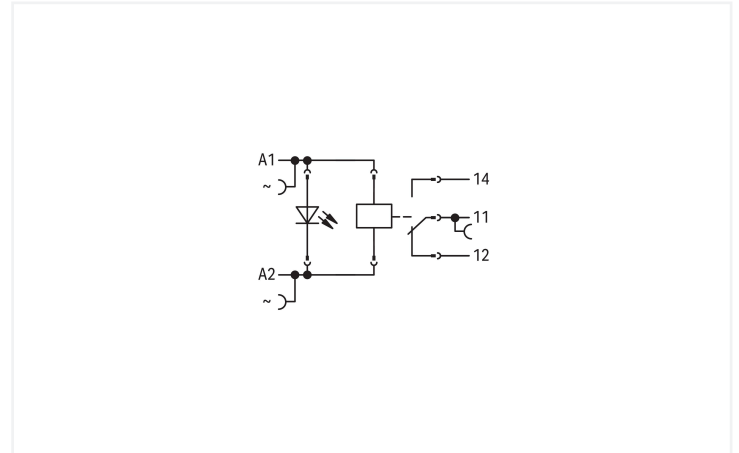
Color: ■ gray



DC load limit curve



Current-carrying capacity curve



Notes

Safety Information

A separator plate (e.g., 209-191) must be used for voltages exceeding 250 V between adjacent relay modules and to comply with reinforced insulation requirements.

Note

Reinforced insulation between coil and contacts
To prevent damaging the gold layer, 30 VDC switching voltages and 50 mA currents must not be exceeded. Higher switching power eventually evaporates the gold layer. The resulting deposits in the housing may reduce service life.
To protect the relay coils and contacts, inductive loads must be dampened with an effective protection circuit.

Technical data

Control circuit

| | |
|-----------------------------|---------|
| Nominal input voltage U_N | 230 VAC |
|-----------------------------|---------|

| | |
|---------------------|------------|
| Input voltage range | $\pm 10\%$ |
|---------------------|------------|

| | |
|--------------------------------|------|
| Nominal input current at U_N | 5 mA |
|--------------------------------|------|

Load circuit

| | |
|--|---|
| Number of changeover/switchover contacts | 1 |
|--|---|

| | |
|--------------------------|-----------|
| Contact material (relay) | AgNi + Au |
|--------------------------|-----------|

| | |
|-----------------------------|------|
| Limiting continuous current | 16 A |
|-----------------------------|------|

| | |
|-------------------------|---------|
| Switching Voltage, Max. | 250 VAC |
|-------------------------|---------|

| | |
|----------------------------------|---------------------------------------|
| Switching power (resistive) max. | AC 4000 VA; DC (see load limit curve) |
|----------------------------------|---------------------------------------|

| | |
|--------------------|---|
| Switching capacity | AC-15: 6 A / 250 VAC; DC-13: 2 A / 24 VDC |
|--------------------|---|

| | |
|--------------------------|--------------------|
| Recommended minimum load | 5 V / 2 mA / 50 mW |
|--------------------------|--------------------|

| | |
|---------------------|------|
| Pull-in time (typ.) | 7 ms |
|---------------------|------|

| | |
|----------------------|------|
| Drop-out time (typ.) | 3 ms |
|----------------------|------|

| | |
|---|---|
| Electrical life (NO; resistive load; 23 °C) | 70 x 10 ⁹ switching operations |
|---|---|

| | |
|-----------------|---|
| Mechanical life | 30 x 10 ⁶ switching operations |
|-----------------|---|

Signaling

| | |
|------------------|---------|
| Status indicator | Red LED |
|------------------|---------|

Safety and protection

| | |
|---------------|-------|
| Rated Voltage | 250 V |
|---------------|-------|

| | |
|---------------------------------|------|
| Rated impulse withstand voltage | 4 kV |
|---------------------------------|------|

| | |
|------------------|---|
| Pollution degree | 3 |
|------------------|---|

| | |
|--|---------|
| Dielectric strength (control/load circuit) (AC, 1 min) | 5 kVrms |
|--|---------|

| | |
|--|---------|
| Dielectric strength (open contact) (AC, 1 min) | 1 kVrms |
|--|---------|

Safety Information

A separator plate (e.g., 209-191) must be used for voltages exceeding 250 V between adjacent relay modules and to comply with reinforced insulation requirements.

Protection type

| | |
|-----------------|------|
| Protection type | IP20 |
|-----------------|------|

Connection Data

| | |
|-----------------------|---------------------|
| Connection technology | Push-in CAGE CLAMP® |
|-----------------------|---------------------|

| | |
|-----------------|--|
| Solid conductor | 0.34 ... 2.5 mm ² / 22 ... 14 AWG |
|-----------------|--|

| | |
|-------------------------|--|
| Fine-stranded conductor | 0.34 ... 2.5 mm ² / 22 ... 14 AWG |
|-------------------------|--|

| | |
|--------------|------------------------------------|
| Strip length | 9 ... 10 mm / 0.35 ... 0.39 inches |
|--------------|------------------------------------|

Physical data

| | |
|-----------------------------------|----------------------|
| Width | 15 mm / 0.591 inches |
| Height | 86 mm / 3.386 inches |
| Depth from upper-edge of DIN-rail | 54 mm / 2.126 inches |

Mechanical data

| | |
|---------------|-------------|
| Mounting type | DIN-35 rail |
|---------------|-------------|

Material data

| | |
|----------------------|--|
| Note (material data) | Information on material specifications can be found here |
| Color | gray |
| Fire load | 0.806 MJ |
| Weight | 47.8 g |

Environmental requirements

| | |
|--|--|
| Ambient temperature (operation at U_N) | -40 ... +70 °C |
| Ambient temperature UL (operation at U_N) | -40 ... +50 °C |
| Ambient temperature (storage) | -40 ... +70 °C |
| Processing temperature | -25 ... +50 °C |
| Temperature range of connection cable | $\geq (T_{\text{ambient}} + 20 \text{ K})$ |

Standards and Specifications

| | |
|--------------------------|---|
| Standards/specifications | EN 61010-2-201 EN 61810-1 EN 61373 UL 508 DNV |
|--------------------------|---|

Basic relay

| | |
|------------------|---------|
| WAGO Basic Relay | 788-179 |
|------------------|---------|

Commercial data

| | |
|-----------------------|--------------------------|
| Product Group | 6 (INTERFACE ELECTRONIC) |
| PU (SPU) | 20 (1) pcs |
| Packaging type | Box |
| Country of origin | DE |
| GTIN | 4055143998055 |
| Customs tariff number | 85364900990 |

Product Classification

| | |
|-------------|----------------------|
| UNSPSC | 39122334 |
| eCl@ss 10.0 | 27-37-16-01 |
| eCl@ss 9.0 | 27-37-16-01 |
| ETIM 9.0 | EC001437 |
| ETIM 10.0 | EC001437 |
| ECCN | NO US CLASSIFICATION |

Environmental Product Compliance

| | |
|---|--|
| CAS-No. | 7439-92-1 79-94-7 |
| REACH Candidate List Substance | 2,2',6,6'-tetrabromo-4,4'-isopropylidenediphenol Lead |
| RoHS Compliance Status | Compliant,With Exemption |
| RoHS Exemption | 7(a) |
| SCIP notification number (Austria) | 3694ca5b-67a6-4ebe-8f3c-414eda20fab5 |
| SCIP notification number (Belgium) | 555a9059-b58d-42cd-9788-ff1e3dcddeb6 |
| SCIP notification number (Bulgaria) | 0ac4afdb-60a6-4bf3-8c29-71aa75ef352b |
| SCIP notification number (Czech Republic) | 214597cc-7c59-45ea-9f2d-d7af98952dcd |
| SCIP notification number (Denmark) | d8b08b82-e6f0-4bf4-960a-e4bcb748e26a |
| SCIP notification number (Finland) | 63baaebc-312d-4abe-9ac5-66e2601788bd |
| SCIP notification number (France) | c99520af-ad87-4921-aed9-ecfc6ab1d0c4 |
| SCIP notification number (Germany) | eee2b7b4-7f80-43c9-8590-ac2fdde0c662 |
| SCIP notification number (Hungary) | 63b4f2b2-6cd6-4744-9c85-e4c5c917aaf |
| SCIP notification number (Italy) | 1046d58c-c060-44b4-94c4-d5d289f08922 |
| SCIP notification number (Netherlands) | 54f28c8b-006b-4d9a-a9b9-115c62c5fdca |
| SCIP notification number (Poland) | 3ccd9e55-19c1-4aa0-8e25-99071c6889c3 |
| SCIP notification number (Romania) | 50426f91-9aff-4b7b-8c44-73776e0778b9 |
| SCIP notification number (Sweden) | 2bd076d7-174e-41c5-9079-3b2dda0c9e81 |

Approvals / Certificates

| General approvals | | | Declarations of conformity and manufacturer's declarations | | |
|---|----------------|---------------------|--|----------|------------------|
| | | | | | |
| Approval | Standard | Certificate Name | Approval | Standard | Certificate Name |
| EAC GZO Almaty Standart | TP TC 004/2011 | EAC CoC 03084 | EU-Declaration of Confor- mity WAGO GmbH & Co. KG | - | - |
| UL Underwriters Laboratories Inc. (ORDINARY LOCATI- ONS) | UL 508 | E175199 Vol.1 Sec.6 | UK-Declaration of Confor- mity WAGO GmbH & Co. KG | - | - |

Approvals for marine applications

| Approval | Standard | Certificate Name |
|-------------------------|-----------------------|------------------|
| DNV DNV Germany GmbH | DNV-CG-0339, Aug.2021 | TAA00001D1 |

Downloads

Environmental Product Compliance

| Compliance Search | | | |
|--|--|--|---|
| Environmental Product Compliance 788-608 | | | ↓ |

Documentation

| Bid Text | | | |
|----------|------------|------------------|---|
| 788-608 | 19.02.2019 | xml 4.90 KB | ↓ |
| 788-608 | 25.01.2019 | docx 16.85 KB | ↓ |

| Instruction Leaflet | | | |
|------------------------------------|-----------------------|-------------------|---|
| Sockets with Elementary Relay/ SSR | V 1.0.1 09.10.2020 | pdf 2271.22 KB | ↓ |

CAD/CAE-Data

| CAD data | |
|----------------------|---|
| 2D/3D Models 788-608 | ↓ |

| CAE data | |
|---------------------------|---|
| EPLAN Data Portal 788-608 | ↓ |
| WSCAD Universe 788-608 | ↓ |
| ZUKEN Portal 788-608 | ↓ |

1 Compatible Products

1.1 Optional Accessories

1.1.1 Basic relay

1.1.1.1 Basic relay



Item No.: 788-179
 Basic relay; Nominal input voltage: 230 VAC; 1 changeover contact; Limiting continuous current: 16 A; with gold contacts; Module width: 13 mm; Module height: 15 mm

1.1.2 Ferrule

1.1.2.1 Ferrule



Item No.: 216-241
 Ferrule; Sleeve for 0.5 mm² / 20 AWG; insulated; electro-tin plated; electrolytic copper; gastight crimped; acc. to DIN 46228, Part 4/09.90; white



Item No.: 216-242
 Ferrule; Sleeve for 0.75 mm² / 18 AWG; insulated; electro-tin plated; electrolytic copper; gastight crimped; acc. to DIN 46228, Part 4/09.90; gray



Item No.: 216-243
 Ferrule; Sleeve for 1 mm² / AWG 18; insulated; electro-tin plated; electrolytic copper; gastight crimped; acc. to DIN 46228, Part 4/09.90; red



Item No.: 216-244
 Ferrule; Sleeve for 1.5 mm² / AWG 16; insulated; electro-tin plated; electrolytic copper; gastight crimped; acc. to DIN 46228, Part 4/09.90; black

1.1.2.1 Ferrule



Item No.: 216-542

Twin ferrule; Sleeve for 2 x 1 mm² / AWG 2 x 18; red, insulated; 12 mm long; red

1.1.3 Filter module

1.1.3.1 Suppressor module



Item No.: 788-148

Filter module; RC filter element; Nominal voltage: 230 VAC

1.1.4 Indicators

1.1.4.1 Status indication



Item No.: 788-125

Accessories for relay modules; Operation status indicator: red

1.1.5 Jumper

1.1.5.1 Jumper



Item No.: 788-118

Jumper; for jumper slot; 2-way; from 1 to 3; insulated; light gray



Item No.: 788-113

Jumper; for jumper slot; 2-way; insulated; light gray



Item No.: 859-402

Jumper; for jumper slot; 2-way; insulated; light gray



Item No.: 788-114

Jumper; for jumper slot; 3-way; insulated; light gray



Item No.: 788-115

Jumper; for jumper slot; 4-way; insulated; light gray



Item No.: 788-116

Jumper; for jumper slot; 6-way; insulated; light gray



Item No.: 788-117

Jumper; for jumper slot; 8-way; insulated; light gray

1.1.6 Marking

1.1.6.1 Double marker carrier



Item No.: 209-128

Adaptor; gray

1.1.6.2 Group marker carrier



Item No.: 249-105

Group marker carrier; gray

Item No.: 209-145

Group marker carrier; white

1.1.6.3 Marker



Item No.: 209-183

Marker; white

Item No.: 793-502

WMB marking card; as card; MARKED; 1 ... 10 (10x); not stretchable; Horizontal marking; snap-on type; white

Item No.: 793-503

WMB marking card; as card; MARKED; 11 ... 20 (10x); not stretchable; Horizontal marking; snap-on type; white

Item No.: 793-504

WMB marking card; as card; MARKED; 21 ... 30 (10x); not stretchable; Horizontal marking; snap-on type; white



Item No.: 793-505

WMB marking card; as card; MARKED; 31 ... 40 (10x); not stretchable; Horizontal marking; snap-on type; white

Item No.: 793-501

WMB marking card; as card; not stretchable; plain; snap-on type; white

Item No.: 2009-115

WMB-Inline; for Smart Printer; 1500 pieces on roll; stretchable 5 - 5.2 mm; plain; snap-on type; white

1.1.6.4 Marking device



Item No.: 210-110

Fiber-tip pen

1.1.6.5 Marking strip



Item No.: 2009-110

Marking strips; for Smart Printer; on reel; not stretchable; plain; snap-on type; white

1.1.6.6 Protective marker cover



Item No.: 209-184

Protection cover; transparent

1.1.7 Tool

1.1.7.1 Operating tool

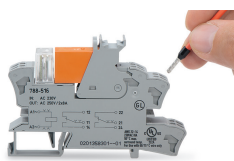


Item No.: 210-720

Operating tool; Blade: 3.5 x 0.5 mm; with a partially insulated shaft; multicoloured

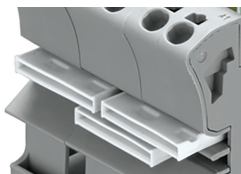
Installation Notes

Conductor termination



Conductor termination

Commoning



Easy commoning using adjacent jumpers

Marking



Marking using WMB Multi markers and group marker carriers.