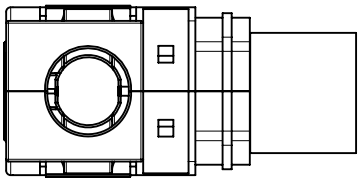
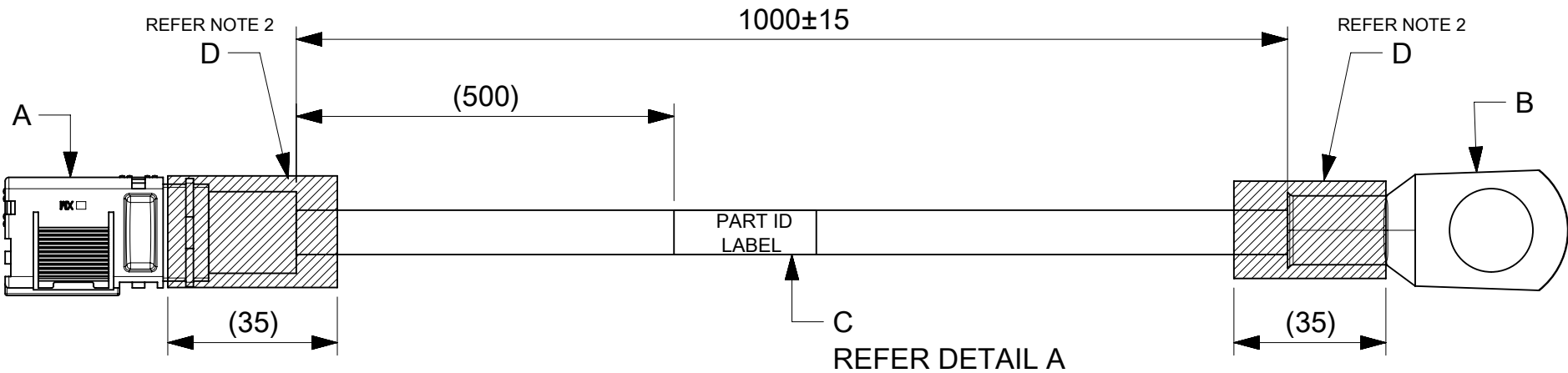


ITEM #	MOLEX PART#	DESCRIPTION	QTY	UOM
A	2178841000	6mm SIDEWIZE ASSY 2 AWG RECEPTACLE BLK	1	PC
B	192210399	BATTERY CABLE LUG (BCL-212-WP) SPM	1	PC
C	-	PART ID LABEL	1	PC
D	-	HST	A/R	M

FROM	TO	CABLE PART#	DESCRIPTION	COLOR
A	B	-	1X2AWG PVC UL1015 BLACK	BLACK



NOTE 4



REFER NOTE 3

2243555116
MOLEX
BATCH WK/YR
DETAIL A

- NOTE:
1. CABLE ASSEMBLY TO BE ENSURED FOR CONTINUITY.
 2. INSTALL HST ON THE BARREL AS SHOWN IN DRAWING.
 3. ENSURE LATCH AND THE CRIMPING PROFILE ARE IN THE SAME PLANE
 4. HST TO BE COVERED FROM THE WIRE INSULATION TO OVER THE RIB, TO ENSURE THERE IS NO EXPOSURE OF BARE MATERIAL

FUNCTIONAL SYMBOLS	THIS DRAWING CONTAINS INFORMATION THAT IS PROPRIETARY TO MOLEX ELECTRONIC TECHNOLOGIES, LLC AND SHOULD NOT BE USED WITHOUT WRITTEN PERMISSION		CURRENT REV DESC:		molex			
	DIMENSION UNITS	SCALE			SW1 6.00MM R-L 1M 2AWG BK			
$\frac{F}{A} = 0$	mm	NTS						
$\frac{F}{E} = 0$	GENERAL TOLERANCES (UNLESS SPECIFIED)							
$\frac{F}{P} = 0$	ANGULAR TOL ± °							
DIVISIONAL SYMBOLS	4 PLACES	±						
	3 PLACES	±						
	2 PLACES	±						
	1 PLACE	±						
	0 PLACES	±						
DRAFT WHERE APPLICABLE MUST REMAIN WITHIN DIMENSIONS			THIRD ANGLE PROJECTION	DRAWING	SERIES	DOCUMENT NUMBER	DOC TYPE	DOC PART
				A4-SIZE	224355	2243555116	PSD	000
					MATERIAL NUMBER	CUSTOMER	REVISION	SHEET NUMBER
					2243555116	GENERAL MARKET	D	1 OF 1

DOCUMENT STATUS	P1	RELEASE DATE	2023/09/07	06:24:51
-----------------	----	--------------	------------	----------