



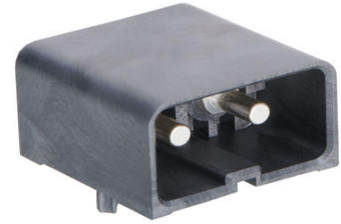
**Part Number :** [2155103031](#)

**Product Description :** PowerWize BMI 3.40mm, 2-circuit, Screw Mount, Right-Angle Header, Tray

**Series Number :** 215510

**Status :** Active

**Product Category :** PCB Headers and Receptacles



---

## Documents and Resources

### Drawings

[2155103031\\_sd.pdf](#)

[2155103121-PK-000.pdf](#)

### 3D Models and Design Files

[STEP AP242](#)

[SOLIDWORKS](#)

[Creo](#)

[Symbol and Footprint \(Multi-Format\)](#)

### Specifications

[2155101000-AS-000.pdf](#)


[2155100003-PS-000.pdf](#)

[2155103000-TS-000.pdf](#)

---

## Product Environment Compliance

### Compliance

GADSL/IMDS	Compliant with Exemption 33
China RoHS	 per SJ/T 11365-2006
EU ELV	Not Relevant
Low-Halogen Status	Low-Halogen per IEC 61249-2-21
REACH SVHC	Not Contained per D(2024)7663-DC (21 Jan 2025)
EU RoHS	Compliant per EU 2015/863

### [Compliance Statements](#)

- EU RoHS
- REACH SVHC
- Low-Halogen

#### Industry Documents

- IPC 1752A Class C
- IPC 1752A Class D
- Molex Product Compliance Declaration
- IEC-62474
- chemSHERPA (xml)

#### Substances of Interest

- PFAS

#### EU RoHS Certificate of Compliance

#### Additional Product Compliance Information

## Part Details

### General

Status	Active
Category	PCB Headers and Receptacles
Series	215510
Description	PowerWize BMI 3.40mm, 2-circuit, Screw Mount, Right-Angle Header, Tray
Application	Panel-to-Board, Panel-to-Busbar, Power
Component Type	PCB Header
Product Name	PowerWize BMI
UPC	195842380806

### Agency

UL	E29179
----	--------

### Electrical

Current - Maximum per Contact	70.0A
Voltage - Maximum	400V

### Physical

Breakaway	No
-----------	----

Circuits (Loaded)	2
Circuits (maximum)	2
Color - Resin	Black
Diameter	3.40mm
Durability (mating cycles max)	200
First Mate / Last Break	No
Flammability	94V-0
Glow-Wire Capable	No
Keying to Mating Part	No
Lock to Mating Part	No
Material - Metal	Copper Alloy
Material - Plating Mating	Silver
Material - Plating Termination	Silver
Material - Resin	Liquid Crystal Polymer
Net Weight	24.220/g
Number of Rows	1
Orientation	Right Angle
Packaging Type	Tray
PCB Locator	Yes
PCB Retention	Yes
PCB Thickness - Recommended	1.58mm min
Pitch - Mating Interface	12.50mm
Pitch - Termination Interface	12.50mm
Plating min - Mating	3.180µm
Plating min - Termination	3.180µm
Polarized to Mating Part	Yes
Polarized to PCB	Yes
Temperature Range - Operating	-40° to +125°C
Termination Interface Style	Screw Mount

---

## Mates With / Use With

### Mates with Part(s)

Description	Part Number
PowerWize BMI 3.40mm, 2-	<u>2155113121</u>

circuit, Black Panel Mount Receptacle Housing, Bag	
---	--

---

This document was generated on Apr 15, 2026