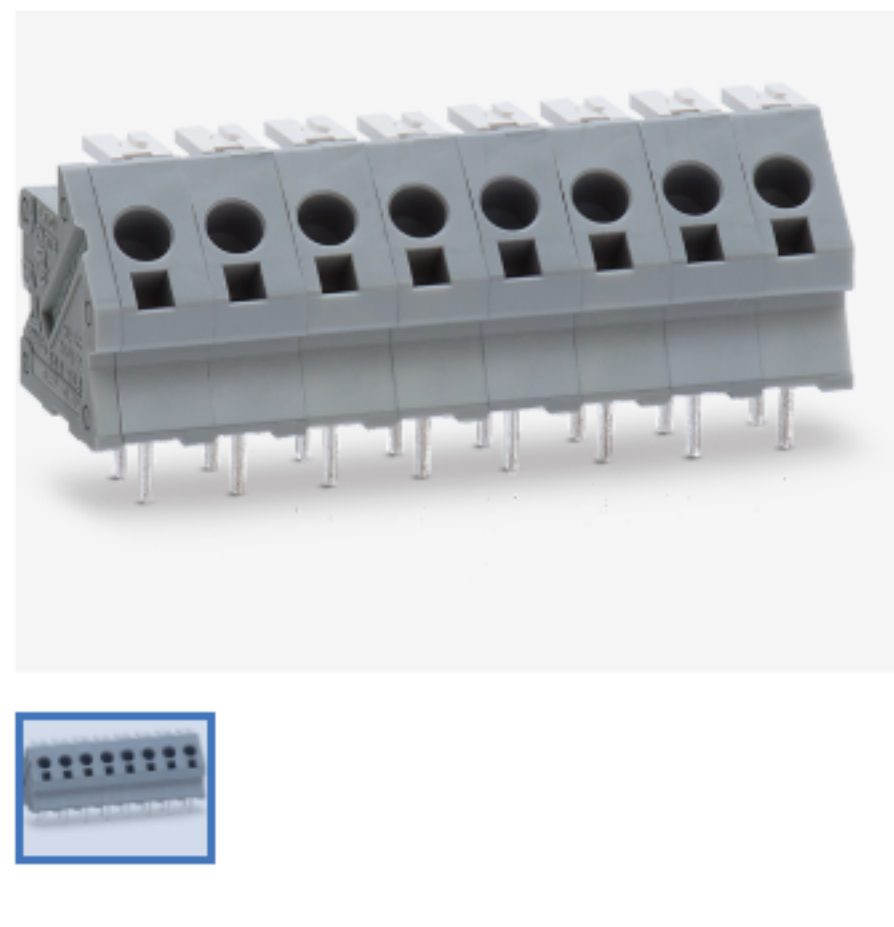


Product mass Precautions for use General notes

ML-1600 made in JAPAN



Pitch 5mm Stranded wire and Solid wire Check hole Press fit

2013-01-25 [Notice of partial product changes.](#) [See other change notifications](#)

	E101073	
	LR65928	
	R9750492	

Order model number
 Order model number ML-1600-[Position]
 Order example ML-1600-2P (An example of ordering with 2 positions.)

Basic information Dimension Soldering heat resistance conditions
 Optional Download

Download Add to My List Sample request (Only available in Japan)

Attention: This download system is not compatible with Internet Explorer. Please use the browsers of Google Chrome, Microsoft Edge and Mozilla Firefox.
 Please read the [download terms](#) when downloading data.
 *For the Environmentally Friendly Substances Report, please see [our Environmental Initiatives](#).
 *For tools to view chemSHERPA data, see the [download procedure PDF](#). For the [survey list PDF](#), please see here.
 * If red phosphorus is intentionally added, it is voluntarily reported by chemSHERPA.
 For the versions of chemSHERPA data, Conflict Minerals Reporting Template (CMRT) and Extended Minerals Reporting Template (EMRT) that are supported by our products, please see [the version correspondence table](#).

Please select the file to download. Items that cannot be checked can only be downloaded by signed-in members. Please sign in and select.

- ML-1600[Common files]**
 - Specification
 - Product test report
 - Certificate of non-applicability of US EAR
 - Parameter Sheet

- ML-1600-1P**
 - chemSHERPA data
 - Report on RoHS Directive
 - 2D CAD data (dxf)
 - 3D CAD data (ipt)
 - 3D CAD data (stp)
 - 3D CAD data (x_b)
 - 3D PDF
 - CMRT
 - EMRT (xlsx)
 - Country of origin (pdf)

- ML-1600-2P**
 - chemSHERPA data
 - Report on RoHS Directive
 - 2D CAD data (dxf)
 - 3D CAD data (ipt)
 - 3D CAD data (stp)
 - 3D CAD data (x_b)
 - 3D PDF
 - CMRT
 - EMRT (xlsx)
 - Country of origin (pdf)

- ML-1600-3P**
 - chemSHERPA data
 - Report on RoHS Directive
 - 2D CAD data (dxf)
 - 3D CAD data (ipt)
 - 3D CAD data (stp)
 - 3D CAD data (x_b)
 - 3D PDF
 - CMRT
 - EMRT (xlsx)
 - Country of origin (pdf)

- ML-1600-4P**
 - chemSHERPA data
 - Report on RoHS Directive
 - 2D CAD data (dxf)
 - 3D CAD data (ipt)
 - 3D CAD data (stp)
 - 3D CAD data (x_b)
 - 3D PDF
 - CMRT
 - EMRT (xlsx)
 - Country of origin (pdf)

- ML-1600-5P**
 - chemSHERPA data
 - Report on RoHS Directive
 - 2D CAD data (dxf)
 - 3D CAD data (ipt)
 - 3D CAD data (stp)
 - 3D CAD data (x_b)
 - 3D PDF
 - CMRT
 - EMRT (xlsx)
 - Country of origin (pdf)

- ML-1600-6P**
 - chemSHERPA data
 - Report on RoHS Directive
 - 2D CAD data (dxf)
 - 3D CAD data (ipt)
 - 3D CAD data (stp)
 - 3D CAD data (x_b)
 - 3D PDF
 - CMRT
 - EMRT (xlsx)
 - Country of origin (pdf)

- ML-1600-7P**
 - chemSHERPA data
 - Report on RoHS Directive
 - 2D CAD data (dxf)
 - 3D CAD data (ipt)
 - 3D CAD data (stp)
 - 3D CAD data (x_b)
 - 3D PDF
 - CMRT
 - EMRT (xlsx)
 - Country of origin (pdf)

- ML-1600-8P**
 - chemSHERPA data
 - Report on RoHS Directive
 - 2D CAD data (dxf)
 - 3D CAD data (ipt)
 - 3D CAD data (stp)
 - 3D CAD data (x_b)
 - 3D PDF
 - CMRT
 - EMRT (xlsx)
 - Country of origin (pdf)

- ML-1600-9P**
 - chemSHERPA data
 - Report on RoHS Directive
 - 2D CAD data (dxf)
 - 3D CAD data (ipt)
 - 3D CAD data (stp)
 - 3D CAD data (x_b)
 - 3D PDF
 - CMRT
 - EMRT (xlsx)
 - Country of origin (pdf)

- ML-1600-10P**
 - chemSHERPA data
 - Report on RoHS Directive
 - 2D CAD data (dxf)
 - 3D CAD data (ipt)
 - 3D CAD data (stp)
 - 3D CAD data (x_b)
 - 3D PDF
 - CMRT
 - EMRT (xlsx)
 - Country of origin (pdf)

- ML-1600-11P**
 - chemSHERPA data
 - Report on RoHS Directive
 - 2D CAD data (dxf)
 - 3D CAD data (ipt)
 - 3D CAD data (stp)
 - 3D CAD data (x_b)
 - 3D PDF
 - CMRT
 - EMRT (xlsx)
 - Country of origin (pdf)

- ML-1600-12P**
 - chemSHERPA data
 - Report on RoHS Directive
 - 2D CAD data (dxf)
 - 3D CAD data (ipt)
 - 3D CAD data (stp)
 - 3D CAD data (x_b)
 - 3D PDF
 - CMRT
 - EMRT (xlsx)
 - Country of origin (pdf)

- ML-1600-13P**
 - chemSHERPA data
 - Report on RoHS Directive
 - 2D CAD data (dxf)
 - 3D CAD data (ipt)
 - 3D CAD data (stp)
 - 3D CAD data (x_b)
 - 3D PDF
 - CMRT
 - EMRT (xlsx)
 - Country of origin (pdf)

- ML-1600-14P**
 - chemSHERPA data
 - Report on RoHS Directive
 - 2D CAD data (dxf)
 - 3D CAD data (ipt)
 - 3D CAD data (stp)
 - 3D CAD data (x_b)
 - 3D PDF
 - CMRT
 - EMRT (xlsx)
 - Country of origin (pdf)

- ML-1600-15P**
 - chemSHERPA data
 - Report on RoHS Directive
 - 2D CAD data (dxf)
 - 3D CAD data (ipt)
 - 3D CAD data (stp)
 - 3D CAD data (x_b)
 - 3D PDF
 - CMRT
 - EMRT (xlsx)
 - Country of origin (pdf)

- ML-1600-16P**
 - chemSHERPA data
 - Report on RoHS Directive
 - 2D CAD data (dxf)
 - 3D CAD data (ipt)
 - 3D CAD data (stp)
 - 3D CAD data (x_b)
 - 3D PDF
 - CMRT
 - EMRT (xlsx)
 - Country of origin (pdf)

- ML-1600-17P**
 - chemSHERPA data
 - Report on RoHS Directive
 - 2D CAD data (dxf)
 - 3D CAD data (ipt)
 - 3D CAD data (stp)
 - 3D CAD data (x_b)
 - 3D PDF
 - CMRT
 - EMRT (xlsx)
 - Country of origin (pdf)

- ML-1600-18P**
 - chemSHERPA data
 - Report on RoHS Directive
 - 2D CAD data (dxf)
 - 3D CAD data (ipt)
 - 3D CAD data (stp)
 - 3D CAD data (x_b)
 - 3D PDF
 - CMRT
 - EMRT (xlsx)
 - Country of origin (pdf)

- ML-1600-19P**
 - chemSHERPA data
 - Report on RoHS Directive
 - 2D CAD data (dxf)
 - 3D CAD data (ipt)
 - 3D CAD data (stp)
 - 3D CAD data (x_b)
 - 3D PDF
 - CMRT
 - EMRT (xlsx)
 - Country of origin (pdf)

- ML-1600-20P**
 - chemSHERPA data
 - Report on RoHS Directive
 - 2D CAD data (dxf)
 - 3D CAD data (ipt)
 - 3D CAD data (stp)
 - 3D CAD data (x_b)
 - 3D PDF
 - CMRT
 - EMRT (xlsx)
 - Country of origin (pdf)