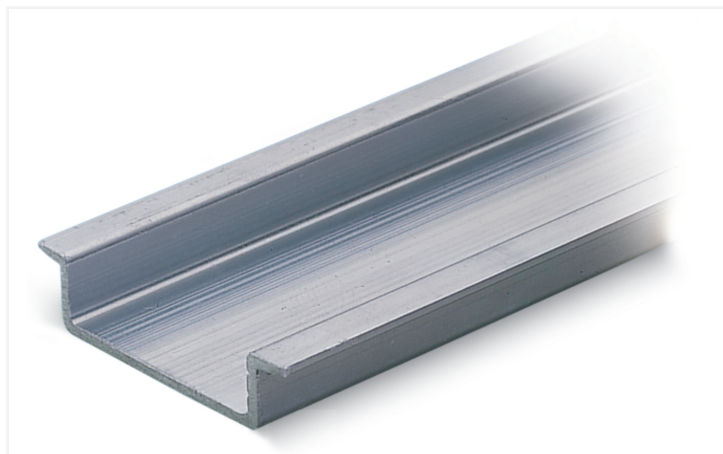


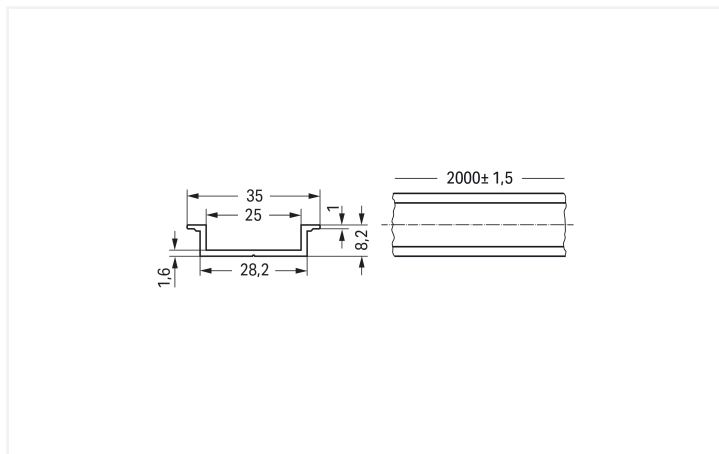
## Data Sheet | Item Number: 210-196

Aluminum carrier rail; 35 x 8.2 mm; 1.6 mm thick; 2 m long; unslotted; similar to EN 60715; silver-colored

<https://www.wago.com/210-196>



Color: ■ silver-colored



Dimensions in mm

### Physical data

Width	2000 mm / 78.74 inches
Height	8.2 mm / 0.323 inches
Depth	35 mm / 1.378 inches

### Material data

Color	silver-colored
Fire load	0 MJ
Weight	400 g
Material	Aluminum (Al Mg Si)

### Commercial data

Product Group	2 (Terminal Block Accessories)
PU (SPU)	20 (1) pcs
Packaging type	Box
Country of origin	DE
GTIN	4017332272315
Customs tariff number	76042990900

### Product Classification

UNSPSC	39121702
eCl@ss 10.0	27-40-06-02
eCl@ss 9.0	27-40-06-02
ETIM 9.0	EC001285
ETIM 10.0	EC001285
ECCN	NO US CLASSIFICATION

**Environmental Product Compliance**

RoHS Compliance Status	Compliant, No Exemption
------------------------	-------------------------

**Downloads**

**Environmental Product Compliance**

Compliance Search	
Environmental Product Compliance 210-196	<a href="#">↓</a>

**Documentation**

Bid Text			
210-196	19.02.2019	xml 2.65 KB	<a href="#">↓</a>
210-196	31.08.2017	doc 24.00 KB	<a href="#">↓</a>

**CAD/CAE-Data**

CAD data	
2D/3D Models 210-196	<a href="#">↓</a>

CAE data	
EPLAN Data Portal 210-196	<a href="#">↓</a>
WSCAD Universe 210-196	<a href="#">↓</a>
ZUKEN Portal 210-196	<a href="#">↓</a>

**1 Compatible Products**

**1.1 Optional Accessories**

**1.1.1 Installation**

**1.1.1.1 Mounting accessories**



**Item No.: 209-137**  
Mounting adapter; can be used as end stop; 6.5 mm wide; gray

**Item No.: 249-117**  
Screwless end stop; 10 mm wide; for DIN-rail 35 x 15 and 35 x 7.5; gray

**Item No.: 249-197**  
Screwless end stop; 14 mm wide; for DIN-rail 35 x 15 and 35 x 7.5; gray

**Item No.: 249-116**  
Screwless end stop; 6 mm wide; for DIN-rail 35 x 15 and 35 x 7.5; gray

## 1.1.2 Marking

### 1.1.2.1 Label



**Item No.: 210-808**

Labels; for Smart Printer; 9.5 x 25 mm; white

**Item No.: 210-708**

Labels; for TP printers; 9.5 x 25 mm; white

## Installation Notes

DIN-Rail	Item No.	Current [A]	Acc. to mm <sup>2</sup> /AWG/GU
DIN 35 x 7.5 (steel)			
slotted	210-112	76	16/6
unslotted	210-113	76	16/6
DIN 35 x 15 (steel)			
1.5 mm thick	210-114	125	35/2
2.3 mm thick	210-118	125	35/2
DIN 35 x 7.5 (Al)			
unslotted	210-196	76	16/6
DIN 35 x 15 (Cu)			
2.3 mm thick	210-198	309	150/6/0
Current applies to rails of 1 m/3'3" length			

When using standard DIN-rails as ground conductor busbars, please refer to the maximum current capacities listed above. Steel DIN-rails are not suited for PEN (ground and N-conductor) applications per EN 60947-7-2 (VDE 0611, Part 3).