



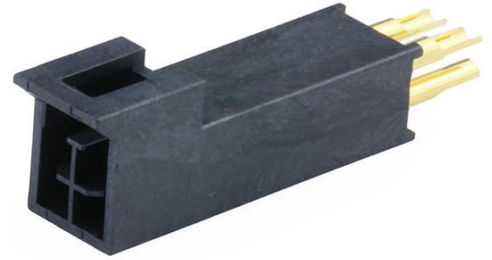
**Part Number :** [2251481104](#)

**Product Description :** Nano-Fit Test Plug, Dual Row, 4 Circuits

**Series Number :** 225148

**Status :** Active

**Product Category :** PCB Headers and Receptacles



---

## Documents and Resources

### Drawings

[2251481104\\_sd.pdf](#)

[2251481000-PK-000.pdf](#)

### 3D Models and Design Files

[STEP AP242](#)

[SOLIDWORKS](#)

[Creo](#)

### Specifications

[AS-105300-100-001.pdf](#)


[2251481000-PS-000.pdf](#)

[2251481000-TS-000.pdf](#)

---

## Product Environment Compliance

### Compliance

GADSL/IMDS	Not Relevant
China RoHS	 per SJ/T 11365-2006
EU ELV	Not Relevant
Low-Halogen Status	Low-Halogen per IEC 61249-2-21
REACH SVHC	Contains Lead per D(2025)7771-DC (04 Feb 2026)
EU RoHS	Compliant with Exemption 6(c) per EU 2015/863

### [Compliance Statements](#)

- EU RoHS
- REACH SVHC
- Low-Halogen

#### Industry Documents

- IPC 1752A Class C
- IPC 1752A Class D
- Molex Product Compliance Declaration
- IEC-62474
- chemSHERPA (xml)

#### Substances of Interest

- PFAS

#### EU RoHS Certificate of Compliance

#### Additional Product Compliance Information

## Part Details

### General

Status	Active
Category	PCB Headers and Receptacles
Series	225148
Description	Nano-Fit Test Plug, Dual Row, 4 Circuits
Application	Power, Wire-to-Board
Component Type	Test Plug
Product Name	Nano-Fit
UPC	198282211020

### Electrical

Current - Maximum per Contact	2.5A
Voltage - Maximum	250V AC (RMS)/DC

### Physical

Breakaway	No
Circuits (Loaded)	4
Circuits (maximum)	4
Color - Resin	Black
Durability (mating cycles max)	10000
First Mate / Last Break	No

Glow-Wire Capable	Yes
Lock to Mating Part	Yes
Material - Metal	Copper Alloy, Stainless Steel
Material - Plating Mating	Gold
Material - Plating Termination	Gold
Material - Resin	High Temperature Thermoplastic
Net Weight	1.420/g
Number of Rows	2
Orientation	Vertical
Packaging Type	Bag
PCB Locator	No
PCB Retention	No
PC Tail Length	4.40mm
Pitch - Mating Interface	2.50mm
Polarized to Mating Part	Yes
Polarized to PCB	No
Shrouded	Fully
Stackable	No
Temperature Range - Operating	-40° to +125°C
Termination Interface Style	Solder or Weld

---

## Mates With / Use With

### Mates with Part(s)

Description	Part Number
Nano-Fit Receptacle Housing, TPA Capable, 2.50mm Pitch, Single Row, 2 Circuits, Black, Glow-Wire Capable	<u>1053071202</u>
Nano-Fit Receptacle Housing, TPA Capable, 2.50mm Pitch, Single Row, 2 Circuits, Natural, Glow-Wire Capable	<u>1053072202</u>
Nano-Fit Receptacle Housing, TPA Capable, 2.50mm Pitch, Single Row, 2 Circuits, Black, Glow-Wire Capable, for UL 1569/1007 Wire	<u>2263541202</u>

Nano-Fit Receptacle Housing, TPA Capable, 2.50mm Pitch, Single Row, 2 Circuits, Natural, Glow-Wire Capable, for UL 1569/1007 Wire	<u>2263542202</u>
Nano-Fit TPA Capable Dual Row Receptacle Housings	<u>105308</u>
Nano-Fit TPA Capable Dual Row Receptacle Housings for UL 1569/1007 Wire	<u>226362</u>

---

This document was generated on Apr 15, 2026