



Part Number : [50579410](#)

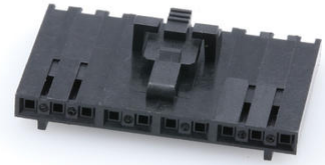
Product Description : SL Crimp Housing, Single Row, Version G, Positive Latch, 10 Circuits, Black

Series Number : 70066

Status : Active

Product Category : Connector Housings

Engineering Part Number : 70066-0184



Documents and Resources

Drawings

[050579410_sd.pdf](#)

[PK-70066-100-001.pdf](#)

3D Models and Design Files

[STEP AP242](#)

[SOLIDWORKS](#)

[Creo](#)

Specifications

[PS-70058-001.pdf](#)


[PS-70400-001.pdf](#)

[PS-71851-001.pdf](#)

[TS-70058-001-001.pdf](#)

Product Environment Compliance

Compliance

GADSL/IMDS	Not Relevant
China RoHS	 per SJ/T 11365-2006
EU ELV	Not Relevant
Low-Halogen Status	Not Low-Halogen per IEC 61249-2-21
REACH SVHC	Not Contained per D(2025)7771-DC (04 Feb 2026)
EU RoHS	Compliant per EU 2015/863

Compliance Statements

- EU RoHS
- REACH SVHC
- Low-Halogen

Industry Documents

- IPC 1752A Class C
- IPC 1752A Class D
- Molex Product Compliance Declaration
- IEC-62474
- chemSHERPA (xml)

Substances of Interest

- PFAS

EU RoHS Certificate of Compliance

Additional Product Compliance Information

Part Details

General

Status	Active
Category	Connector Housings
Series	70066
Description	SL Crimp Housing, Single Row, Version G, Positive Latch, 10 Circuits, Black
Application	Signal, Wire-to-Board
Comments	Version G; Use with CyClone Panel-to-Panel Connector 73099
Product Name	CyClone,SL
UPC	800753577817

Agency

CSA	LR19980
UL	E29179

Physical

Circuits (maximum)	10
Color - Resin	Black
Gender	Receptacle

Glow-Wire Capable	No
Keying to Mating Part	Yes
Lock to Mating Part	Yes
Material - Resin	Polyester
Net Weight	0.900/g
Number of Rows	1
Packaging Type	Bag
Panel Mount	No
Pitch - Mating Interface	2.54mm
Stackable	No
Temperature Range - Operating	-40° to +105°C

Solder Process Data

Lead-Free Process Capability	N/A
------------------------------	-----

Mates With / Use With

Mates with Part(s)

Description	Part Number
SL Single Row Housing Panel Mounts	<u>70018</u>
SL Single Row Crimp Housings	<u>70107</u>
SL Vertical Single Row Headers	<u>70541</u>
SL Vertical Single Row Headers	<u>70543</u>
SL Vertical Single Row Headers	<u>70545</u>
SL Vertical, Single Row, Surface Mount Headers	<u>74099</u>
SL Right-Angle Single Row Headers	<u>70551</u>
SL Right-Angle, Single Row, Low Profile Headers	<u>70553</u>
SL Right-Angle Single Row Headers	<u>70555</u>
SL Right-Angle, Single Row, Low Profile, Surface Mount Headers	<u>70634</u>

Use with Part(s)

Description	Part Number
SL Female Terminals	<u>70058</u>
SL Female Terminals	<u>71851</u>

This document was generated on May 21, 2026