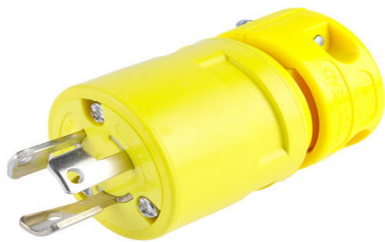




Part Number : [1301410044](#)
Product Description : Super-Safeway Plug with
Locking Blade, 3 Pole/3 Wire, Non-NEMA, 15A/125V,
10A/250V
Series Number : 130141
Status : Active
Product Category : Wiring Devices
Engineering Number : 2407



Documents & Resources

Product Environment Compliance

Compliance

GADSL/IMDS	Not Relevant
China RoHS	Not Relevant
EU ELV	Not Relevant
Low-Halogen Status	Not Reviewed per IEC 61249-2-21
REACH SVHC	Not Reviewed per D(2025)4165-DC (25 June 2025)
EU RoHS	Not Reviewed per EU 2015/863

Compliance Statements

- EU RoHS
- REACH SVHC
- Low-Halogen

Industry Documents

- IPC 1752A Class C
- IPC 1752A Class D
- Molex Product Compliance Declaration
- IEC-62474
- chemSHERPA (xml)

Substances of Interest

- PFAS

EU RoHS Certificate of Compliance

Part Details

General

Status	Active
Category	Wiring Devices
Series	130141
Description	Super-Safeway Plug with Locking Blade, 3 Pole/3 Wire, Non-NEMA, 15A/125V, 10A/250V
IP Rating	N/A
NEMA Configuration	Non-NEMA Locking
Product Name	Super-Safeway
Specialty	N/A
Type	Plug
UPC	78678870480

Electrical

Current - Maximum per Contact	10.0A, 15.0A
GFCI	No
Voltage - Maximum	125V / 250V

Physical

Cord Type	N/A
Flange	No
Flip Lid	No
Gender	Male
Length	N/A
Lighted Connector	No
Locking Blade	Yes
Poles	3-pole/3-wire
Receptacle Type	N/A