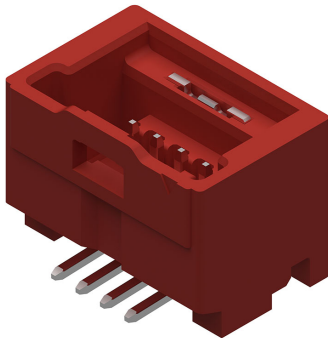





Part Number : [2016480022](#)
Product Description : Spot-On Wire-to-Board Header with Nail, 1.50mm Pitch, Single Row, Vertical, 2 Circuits, with Potting Capability, Matte Tin (Sn) Plating, Red
Series Number : 201648
Status : Not Recommended For New Design
Product Category : PCB Headers and Receptacles



Documents & Resources

Product Environment Compliance

Compliance

GADSL/IMDS	Not Relevant
China RoHS	
EU ELV	Not Relevant
Low-Halogen Status	Not Low-Halogen per IEC 61249-2-21
REACH SVHC	Not Contained per D(2024)7663-DC (21 Jan 2025)
EU RoHS	Compliant per EU 2015/863

Multiple Part Product Compliance Statements

- Eu RoHS
- REACH SVHC
- Low-Halogen

Multiple Part Industry Compliance Documents

- IPC 1752A Class C
- IPC 1752A Class D
- Molex Product Compliance Declaration
- IEC-62474
- chemSHERPA (xml)

EU RoHS Certificate of Compliance

Part Details

General

Status	Not Recommended For New Design
Category	PCB Headers and Receptacles
Series	201648
Description	Spot-On Wire-to-Board Header with Nail, 1.50mm Pitch, Single Row, Vertical, 2 Circuits, with Potting Capability, Matte Tin (Sn) Plating, Red
Application	Signal, Wire-to-Board
Component Type	PCB Header
Product Name	Spot-On
UPC	889056862103

Electrical

Current - Maximum per Contact	2.0A
Voltage - Maximum	100V AC (RMS)/DC

Physical

Breakaway	No
Circuits (Loaded)	2
Circuits (maximum)	2
Color - Resin	Red
Durability (mating cycles max)	30
First Mate / Last Break	No
Glow-Wire Capable	No
Guide to Mating Part	No
Keying to Mating Part	Yes
Lock to Mating Part	Yes
Material - Metal	Brass
Material - Plating Mating	Matte Tin
Material - Plating Termination	Matte Tin
Material - Resin	Polyamide
Net Weight	713.777/mg
Number of Rows	1
Orientation	Vertical

Packaging Type	Embossed Tape on Reel
PCB Locator	No
PCB Retention	Yes
Pitch - Mating Interface	1.50mm
Pitch - Termination Interface	1.50mm
Plating min - Mating	1.000µm
Plating min - Termination	1.000µm
Polarized to Mating Part	Yes
Polarized to PCB	Yes
Robotic Placement	Vacuum Pick-Up Area
Shrouded	Fully
Stackable	No
Temperature Range - Operating	-40° to +105°C
Termination Interface Style	Surface Mount

This document was generated on Apr 22, 2025