

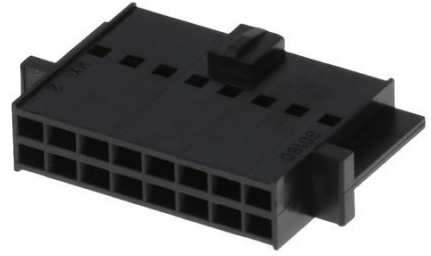
Part Number : [901600116](#)

Product Description : 2.54mm Pitch C-Grid III Crimp Housing Dual Row, 16 Circuits, Black

Series Number : 90160

Status : Active

Product Category : Connector Housings



Documents and Resources

Drawings

[901600116_sd.pdf](#)

[PK-90160-0001-001.pdf](#)

3D Models and Design Files

[STEP AP242](#)

[SOLIDWORKS](#)


[Creo](#)

Specifications

[PS-99020-0001-001.pdf](#)

Product Environment Compliance

Compliance

GADSL/IMDS	Not Relevant
China RoHS	 per SJ/T 11365-2006
EU ELV	Not Relevant
Low-Halogen Status	Low-Halogen per IEC 61249-2-21
REACH SVHC	Contains Triphenyl-phosphate per D(2025)7771-DC (04 Feb 2026)
EU RoHS	Compliant per EU 2015/863

Compliance Statements

- EU RoHS
- REACH SVHC

- Low-Halogen

Industry Documents

- IPC 1752A Class C
- IPC 1752A Class D
- Molex Product Compliance Declaration
- IEC-62474
- chemSHERPA (xml)

Substances of Interest

- PFAS

EU RoHS Certificate of Compliance

Additional Product Compliance Information

Part Details

General

Status	Active
Category	Connector Housings
Series	90160
Description	2.54mm Pitch C-Grid III Crimp Housing Dual Row, 16 Circuits, Black
Application	Signal, Wire-to-Board
Product Name	C-Grid III
UPC	800753530881

Agency

CSA	LR19980
UL	E29179

Physical

Circuits (maximum)	16
Color - Resin	Black
Gender	Receptacle
Glow-Wire Capable	No
Material - Resin	PPO
Net Weight	1.204/g
Number of Rows	2

Packaging Type	Bag
Panel Mount	No
Pitch - Mating Interface	2.54mm
Temperature Range - Operating	-55° to +105°C

Mates With / Use With

Use with Part(s)

Description	Part Number
Pre-Crimped Lead C-Grid III Female-to-C-Grid III Female, Tin (Sn) Plating, 150.00mm Length, 22 AWG, Black	<u>797582022</u>
Pre-Crimped Lead C-Grid III Female-to-C-Grid III Female, Tin (Sn) Plating, 300.00mm Length, 22 AWG, Black	<u>797582023</u>
C-Grid III Female Crimp Terminals	<u>90119</u>

This document was generated on Apr 11, 2026