



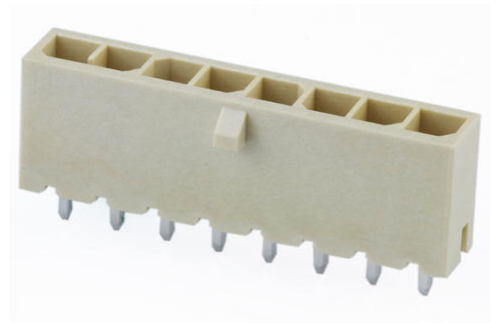
Part Number : [2165713017](#)

Product Description : Micro-Fit+ Versa Color Vertical Header, Through Hole, 3.00mm Pitch, Single Row, 7 Circuits, 0.76µm Gold (Au) Plating, Glow-Wire Capable, Natural (White)

Series Number : 216571

Status : Active

Product Category : PCB Headers and Receptacles



Documents and Resources

Drawings

[2165713017 sd.pdf](#)

[2165710002-PK-000.pdf](#)

3D Models and Design Files

[STEP AP242](#)

[SOLIDWORKS](#)

[Creo](#)

[Symbol and Footprint \(Multi-Format\)](#)

Specifications

[2064600001-AS-000.pdf](#)


[2064600000-PS-000.pdf](#)

[2064600001-TS-000.pdf](#)

[2157590005-TS-000.pdf](#)

Product Environment Compliance

Compliance

GADSL/IMDS	Compliant with Exemption 44; 34; 33
China RoHS	 per SJ/T 11365-2006
EU ELV	Not Relevant
Low-Halogen Status	Low-Halogen per IEC 61249-2-21
REACH SVHC	Not Contained per D(2025)7771-

	DC (04 Feb 2026)
EU RoHS	Compliant per EU 2015/863

Compliance Statements

- EU RoHS
- REACH SVHC
- Low-Halogen

Industry Documents

- IPC 1752A Class C
- IPC 1752A Class D
- Molex Product Compliance Declaration
- IEC-62474
- chemSHERPA (xml)

Substances of Interest

- PFAS

EU RoHS Certificate of Compliance

Additional Product Compliance Information

Part Details

General

Status	Active
Category	PCB Headers and Receptacles
Series	216571
Description	Micro-Fit+ Versa Color Vertical Header, Through Hole, 3.00mm Pitch, Single Row, 7 Circuits, 0.76µm Gold (Au) Plating, Glow-Wire Capable, Natural (White)
Application	Wire-to-Board
Component Type	PCB Header
Product Name	Micro-Fit+ Versa Color
UPC	196823367083

Agency

CSA	LR19980
UL	E29179

Electrical

Current - Maximum per Contact	12.5A
Voltage - Maximum	600V AC (RMS)/DC

Physical

Breakaway	No
Circuits (Loaded)	7
Circuits (maximum)	7
Color - Resin	Natural
Durability (mating cycles max)	200
First Mate / Last Break	No
Flammability	94V-0
Glow-Wire Capable	Yes
Keying to Mating Part	Yes
Lock to Mating Part	Yes
Material - Metal	Copper Alloy
Material - Plating Mating	Gold
Material - Plating Termination	Matte Tin
Material - Resin	Liquid Crystal Polymer (LCP)
Mounting Style	Through Hole
Net Weight	1.091/g
Number of Rows	1
Orientation	Vertical
Packaging Type	Tray
PCB Retention	Yes
PCB Thickness - Recommended	1.57mm
PC Tail Length	3.18mm
Pitch - Mating Interface	3.00mm
Pitch - Termination Interface	3.00mm
Plating min - Mating	0.762µm
Polarized to Mating Part	Yes
Polarized to PCB	Yes
Shrouded	Shrouded
Temperature Range - Operating	-40° to +125°C
Termination Interface Style	Through Hole

Mates With / Use With

Mates with Part(s)

Description	Part Number
Micro-Fit+ Single Row Receptacle Housings	<u>215759</u>

This document was generated on May 26, 2026