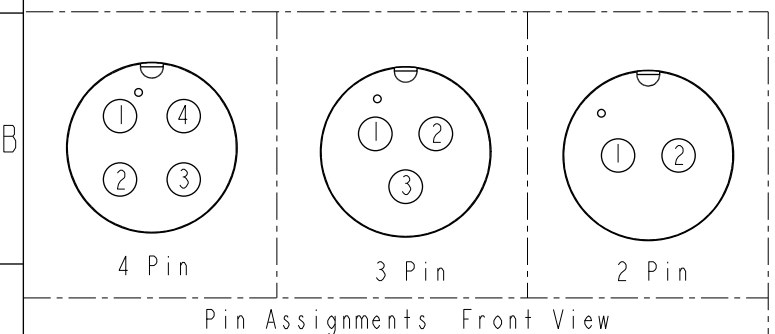
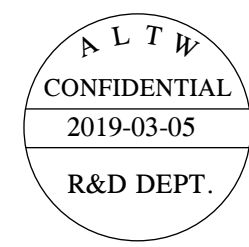
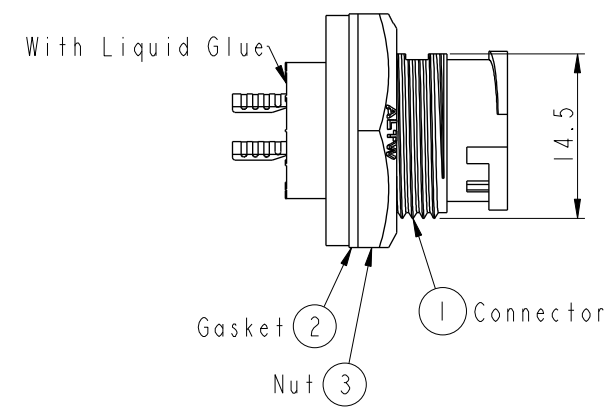
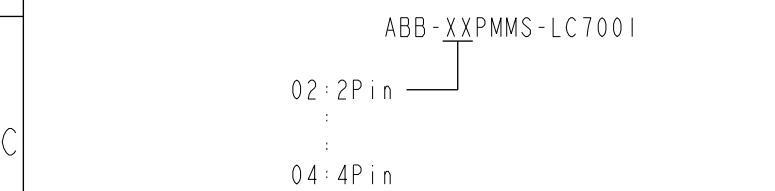
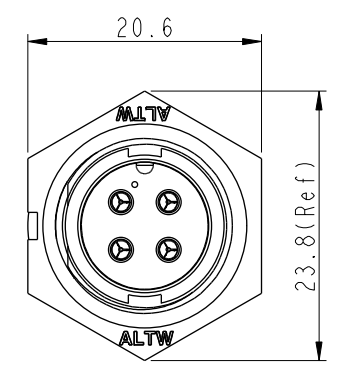
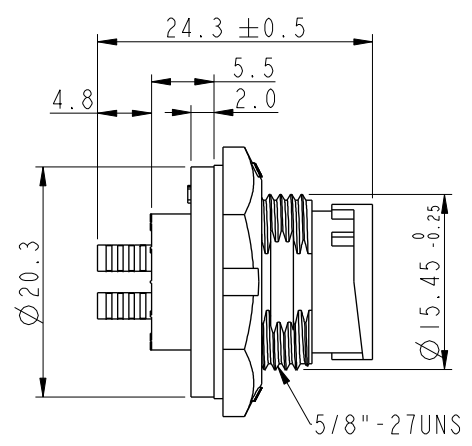
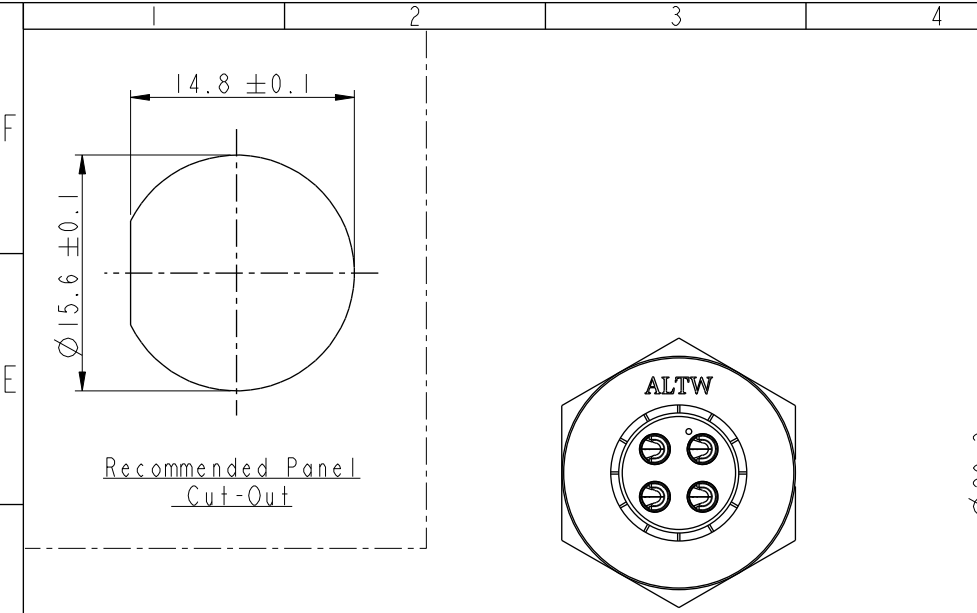


THIS DOCUMENT IS SUBJECT TO CHANGE WITHOUT NOTICE. IT IS CONFIDENTIAL AND A PROPERTY OF Amphenol LTW. DISCLOSURE TO THIRD PARTY HAS TO BE AUTHORIZED BY Amphenol LTW.

REV.	ECN NO.	DATE	SIGN	DESCRIPTION
B	C190346	2019/03/05	Vicky	Change Note



- Note:**
- \* Important Dimension To Check.
  - \* Waterproof Rate: IP67, Unmated.
  - \* Housing: Thermoplastic, Black.
  - \* Pin: Copper Alloy, Gold Plated.
  - \* Nut: Thermoplastic, Black.
  - \* Gasket: Rubber, Gray.
  - \* Use with waterproof cap or dust cap  
Maximum Panel Thickness: 2.8mm
  - \* Use without waterproof cap or dust cap  
Maximum Panel Thickness: 4.0mm
  - \* Gasket and Nut are packed separately in PE bags. (Gasket/Nut不組裝，散裝出貨)

UNIT: mm		TOLERANCE		TITLE		ITEM NO		DRAWN BY		DATE	
TOLERANCE		SCALE		SIZE		DWG NO		CHECKED BY		DATE	
.X ±0.25		3:2		A4		ABB-XXPMMS-LC7001		Rita		2019-03-05	
.XX ±0.1		REV. B		WC-REV. A.1		CUSTOMER		APPROVED BY		DATE	
.XXX ±0.05						ALTW		Max		2019-03-05	
ANGLES ±1°											

**Amphenol LTW**  
安費諾亮泰企業股份有限公司