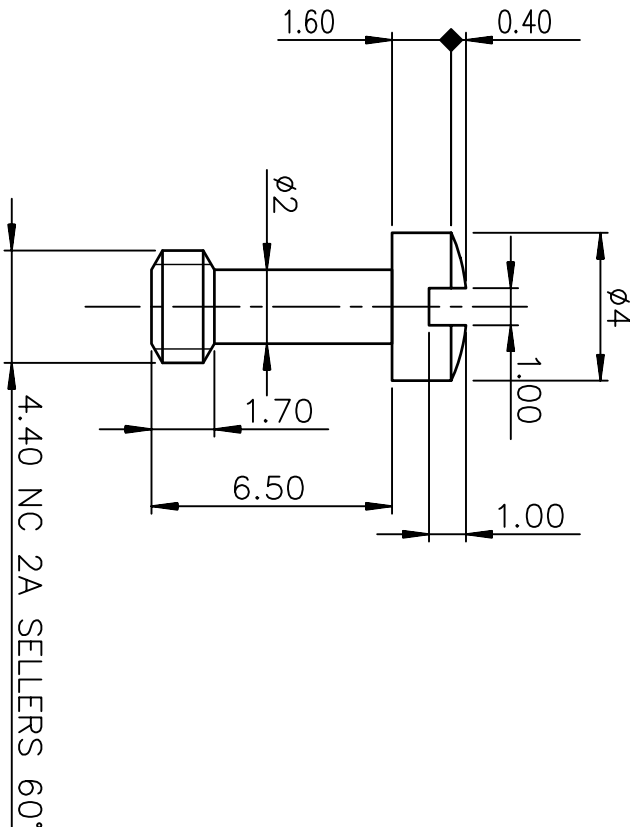


1

2

3

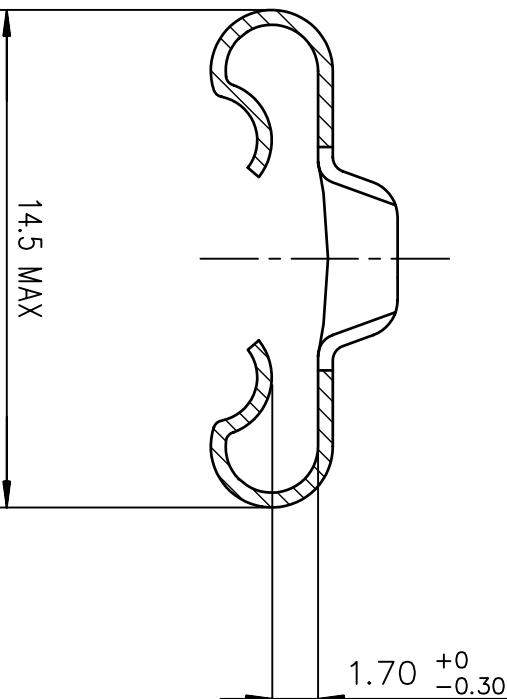
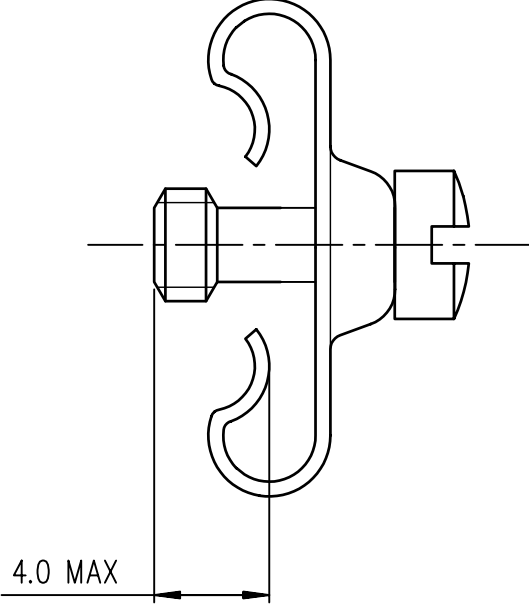
4



NOTES

Pieces assembly  
Packaging : per 100 piece  
Material : steel


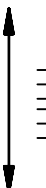
ASSEMBLY VIEW



NOTE : RoHS INFORMATIONS

- The "LF" product meets European union Directives and other country regulations as described in GS-22-008.
- The product is not intended to be exposed to a manufacturing solder process.
- Plating: Sn pure bright over Copper.
- Packaging spec: see GS-14-920.

rev	ecn no	dr	date
A	LS05-0123	LGO	2005/12/28
B	LS06-0097	LGO	2006/07/28
C	LS09-0006	PCR	2009/01/08
D	ELX-H-01663	PK	2012/05/09
E	ELX-H-01666	PK	2012/05/21
-	-	-	-

www.fciconnect.com				surface ISO 1302		✓	tolerance std ISO 406 ISO 1101			mm 	
				TOLERANCES UNLESS OTHERWISE SPECIFIED							
Dr	GOISNARD	2005/12/28	ANGULAR				0.X	±0.1	size	A3	Scale 5
Eng	PESSON	2005/12/28	LINEAR				0.XX	±0.1	ECN		
Chr	LEGARE	2005/12/28	0.XX' ±2				0.XXX	±0.1	ECN	ELX-H-011686	
Appr	LEGARE	2005/12/28	Product family				D-SUB		Spec ref -		
			MALE SCREW LOCKS				no		C01-8655-1634		
			D SUB ACCESSORIES				dwg		Rev. E		
catalog no							-		CUSTOMER sheet 1 of 1		

LEAD-FREE PART-NUMBER

Part number 863004ATLF

European Views

1

2

3

4