



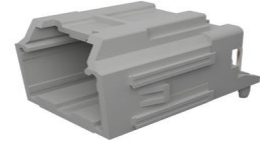
**Part Number :** [346916121](#)

**Product Description :** Stac64 Right-Angle Header Assembly, Plastic Pin-Alignment-Plate, 12 Circuits, Polarization B, Gray, Tray

**Series Number :** 34691

**Status :** Active

**Product Category :** PCB Headers and Receptacles



---

## Documents and Resources

### Drawings

[346916121 sd.pdf](#)

[PK-31300-892-000.pdf](#)

### 3D Models and Design Files

[STEP AP242](#)

[SOLIDWORKS](#)

[Creo](#)

[Symbol and Footprint \(Multi-Format\)](#)

### Specifications

[347290200-AS-CH-000.pdf](#)


[AS-34729-020-001.pdf](#)

[PS-34729-020-001.pdf](#)

---

## Product Environment Compliance

### Compliance

|                    |   |
|--------------------|---|
| GADSL/IMDS         | Compliant with Exemption 44; 33   |
| China RoHS         |  per SJ/T 11365-2006 |
| EU ELV             | Compliant per 2000/53/EC  |
| Low-Halogen Status | Low-Halogen per IEC 61249-2-21  |
| REACH SVHC         | Not Contained per D(2025)6375-DC (05 Nov 2025)  |
| EU RoHS            | Compliant per EU 2015/863   |

### Compliance Statements

- EU RoHS
- REACH SVHC
- Low-Halogen

### Industry Documents

- IPC 1752A Class C
- IPC 1752A Class D
- Molex Product Compliance Declaration
- IEC-62474
- chemSHERPA (xml)

### Substances of Interest

- PFAS

### EU RoHS Certificate of Compliance

### Additional Product Compliance Information

---

## Part Details

### General

|                |  |
|----------------|--|
| Status         | Active   |
| Category       | PCB Headers and Receptacles  |
| Series         | 34691  |
| Description    | Stac64 Right-Angle Header Assembly, Plastic Pin-Alignment-Plate, 12 Circuits, Polarization B, Gray, Tray |
| Application    | Automotive, Power, Wire-to-Board   |
| Comments       | Polarization B   |
| Component Type | PCB Header   |
| Product Name   | Stac64   |
| UPC            | 887191003658   |

### Electrical

|                               |       |
|-------------------------------|-------|
| Current - Maximum per Contact | 10.0A |
| Voltage - Maximum             | 500V  |

### Physical

|                   |    |
|-------------------|----|
| Breakaway         | No |
| Circuits (Loaded) | 12 |

|                                |                                |
|--------------------------------|--------------------------------|
| Circuits (maximum)             | 12                             |
| Color - Resin                  | Gray                           |
| Durability (mating cycles max) | 10                             |
| First Mate / Last Break        | No                             |
| Glow-Wire Capable              | No                             |
| Guide to Mating Part           | No                             |
| Keying to Mating Part          | None                           |
| Lock to Mating Part            | Yes                            |
| Material - Metal               | Brass                          |
| Material - Plating Mating      | Tin                            |
| Material - Plating Termination | Tin                            |
| Material - Resin               | High Temperature Thermoplastic |
| Net Weight                     | 6.472/g                        |
| Number of Rows                 | 2                              |
| Orientation                    | Right Angle                    |
| Packaging Type                 | Tray                           |
| PCB Locator                    | Yes                            |
| PCB Retention                  | None                           |
| PCB Thickness - Recommended    | 1.57mm                         |
| Pitch - Mating Interface       | 2.54mm                         |
| Pitch - Termination Interface  | 2.54mm                         |
| Polarized to Mating Part       | Yes                            |
| Polarized to PCB               | Yes                            |
| Shrouded                       | Yes                            |
| Stackable                      | No                             |
| Temperature Range - Operating  | -40° to +105°C                 |
| Termination Interface Style    | Through Hole                   |

### Solder Process Data

|                              |      |
|------------------------------|------|
| Max-Duration                 | 40   |
| Lead-Free Process Capability | WAVE |
| Max-Cycle                    | 3    |
| Max-Temp                     | 260  |

---

### Mates With / Use With

## Mates with Part(s)

| Description                | Part Number  |
|----------------------------|--------------|
| Stac64 Receptacle Housings | <u>34729</u> |

---

This document was generated on Dec 14, 2025