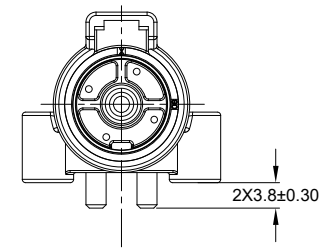
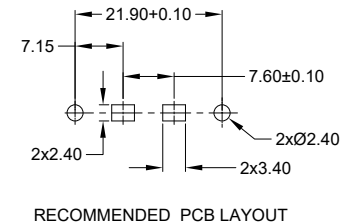
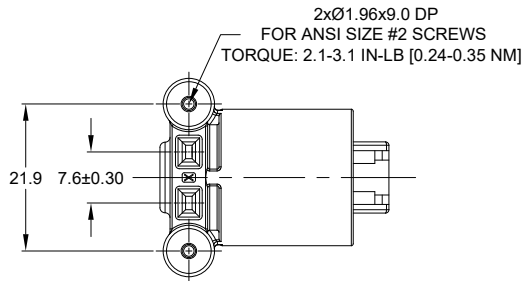


REVISIONS					
REV	ECO	DESCRIPTION	DATE	BY	APPR
A1	-	RELEASED DRAWING	MAY-10-21	VITO	TOMMY



NOTES: UNLESS OTHERWISE SPECIFIED

- MATERIAL:  
HOUSING: THERMOPLASTIC; COLOR:BLACK  
CONTACT: COPPER ALLOY  
SEAL:SILICONE RUBBER
- MODIFICATIONS :RIGHT ANGLE PCB MOUNT,SCREW BOSS
- SPECIFICATIONS:  
3.1 CURRENT RATING: 60 AMPS  
3.2 OPERATING TEMPERATURE: -55°C TO +125°C  
3.3 DIELECTRIC WITHSTANDING VOLTAGE: LESS THAN 2 MILLIAMPS CURRENT LEAKAGE @ 1500 VOLTS AC.  
3.4 INSULATION RESISTANCE: 1000 MEGOHMS MIN @ 25°C.  
3.5 MOISTURE RESISTANCE: IP67&IP69K (MATED CONDITION)  
3.6 MATING CYCLE DURABILITY: 100 CYCLES  
3.7 RoHS COMPLIANT
- MATING PART:ATHD06-1-8S-XX PLUG(XX = MODIFICATIONS )
- ALL DIMENSIONS ARE FOR REFERENCE USE ONLY.



ATFH13-1-8P-BM1X VARIANTS		
CONTACT PLATING	PART NUMBER	WEIGHT (GRAMS)
MATING END: GOLD PCB END: TIN	ATFH13-1-8P-BM11	13.1
MATING END: NICKEL PCB END: TIN	ATFH13-1-8P-BM13	13.1

ATFH13-1-8P-BM1X		DESCRIPTION		ITEM
QUANTITY	PART NUMBER	MATERIALS LIST		
UNLESS OTHERWISE SPECIFIED: 1) All dimensions are in metric(mm). 2) Tolerances are as follows: 1 PL DEC ±0.30 2 PL DEC ±0.15 3 PL DEC ±0.08 Fractions ±1/64 Angles ±1°		SIGNATURES		DATE
3) Note reference =		DRAWN: VITOLI		MAY-10-21
MATERIAL SPECIFICATIONS:		CHECKED: ORION LI		MAY-12-21
PROCESS SPECIFICATIONS:		ENGINEER:		
NEXT ASSY:		APPROVAL: TOMMY XIE		MAY-13-21
		CUSTOMER:		
		THIS DRAWING IS SUPPLIED FOR INFORMATION ONLY. DESIGN FEATURES, SPECIFICATIONS AND PERFORMANCE DATA SHOWN HEREON ARE THE PROPERTY OF THE AMPHENOL CORPORATION. NO RIGHTS OF REPRODUCTION ARE IMPLIED. ALL DIMENSIONS ARE SUBJECT TO NORMAL MANUFACTURING VARIATIONS.		
		Sine Systems - www.amphenol-sine.com 44724 Morley Drive Clinton Township, MI 48036		
		1 POS,RIGHT ANGLE RECEPTACLE,PIN, BOARDLOCK,ATHD SERIES,SIZE 8,SCREW BOSS		
SIZE	TYPE	DWG NO	REVISION	
B	C-	ATFH13-1-8P-BM1X	A1	
SCALE: NONE		SHEET 1 OF 1		

TITLE: 1 POS,RIGHT ANGLE RECEPTACLE,PIN,ATHD SERIES,SIZE 8,SCREW BOSS  
DWG NO: ATFH13-1-8P-BM1X  
REV: A1  
SH: 1  
OF: 1