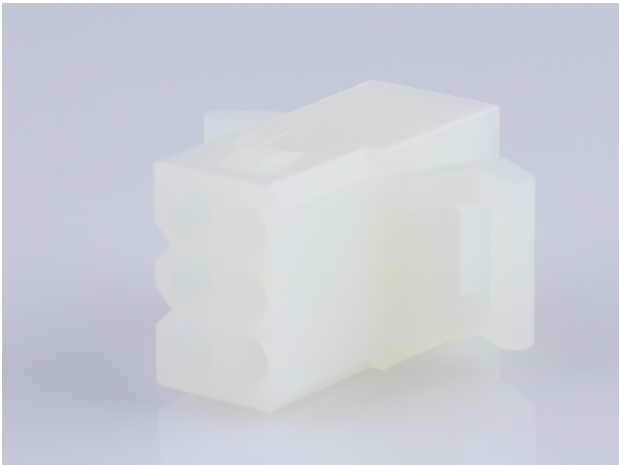




Part Number : [469990805](#)
Product Description : 1.57mm Diameter
Standard .062" Pin and Socket Receptacle
Housing, 6 Circuits, with Pre-bent Mounting
Ears, Natural
Series Number : 1625
Status : Active
Product Category : Connector Housings
Engineering Number : 1625-6R2



Documents & Resources


Drawings
[469990805_sd.pdf](#)

3D Models and Design Files
[469990805_stp.zip](#)

Specifications
[PK-1625-003-001.pdf](#)

Product Environment Compliance

Compliance

GADSL/IMDS	Not Relevant
China RoHS	
EU ELV	Not Relevant
Low-Halogen Status	Low-Halogen per IEC 61249-2-21
REACH SVHC	Not Contained per D(2024)6225-DC (07 Nov 2024)
EU RoHS	Compliant per EU 2015/863

- Multiple Part Product Compliance Statements
- Eu RoHS
 - REACH SVHC
 - Low-Halogen

Multiple Part Industry Compliance Documents

- IPC 1752A Class C
- IPC 1752A Class D
- Molex Product Compliance Declaration
- IEC-62474
- chemSHERPA (xml)

EU RoHS Certificate of Compliance

Part Details

General

Status	Active
Category	Connector Housings
Series	1625
Description	1.57mm Diameter Standard .062" Pin and Socket Receptacle Housing, 6 Circuits, with Pre-bent Mounting Ears, Natural
Application	Power, Wire-to-Wire
Product Name	Standard .062"
UPC	889056852449

Agency

CSA	LR19980
UL	E29179

Physical

Circuits Detail	2x3
Circuits (maximum)	6
Color - Resin	Natural
Flammability	94V-2
Gender	Receptacle
Glow-Wire Capable	No
Keying to Mating Part	None
Lock to Mating Part	Yes
Material - Resin	Nylon
Net Weight	1.867/g
Number of Rows	3

Packaging Type	Bag
Panel Mount	Yes
Pitch - Mating Interface	3.68mm
Pitch - Termination Interface	3.68mm
Polarized to Mating Part	Yes
Stackable	No
Temperature Range - Operating	-40° to +105°C

This document was generated on Feb 08, 2025
