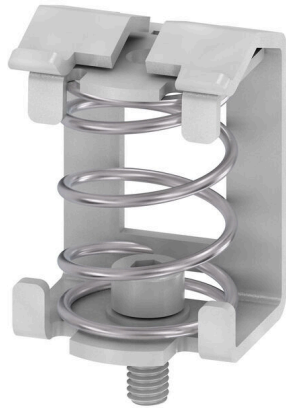


## KLBUE 4-13.5 SC

**Weidmüller Interface GmbH & Co. KG**  
Klingenbergstraße 26  
D-32758 Detmold  
Germany

[www.weidmueller.com](http://www.weidmueller.com)



With our wide range of KLBÜ shield connections, you can achieve flexible and self-adjusting shield contacting and ensure error-free plant operation.

### General ordering data

Version	Clamping yoke, Clamping yoke for shield connection, Steel
Order No.	<a href="#">1712311001</a>
Type	KLBUE 4-13.5 SC
GTIN (EAN)	4032248032358
Qty.	10 items

## KLBUE 4-13.5 SC

Weidmüller Interface GmbH &amp; Co. KG

Klingenbergstraße 26

D-32758 Detmold

Germany

www.weidmueller.com

## Technical data

## Approvals

ROHS	Conform
------	---------

## Dimensions and weights

Depth	31.45 mm	Depth (inches)	1.2382 inch
Height	22 mm	Height (inches)	0.8661 inch
Width	20.1 mm	Width (inches)	0.7913 inch
Mounting dimension - width	18.9 mm	Net weight	17.3 g

## Temperatures

Storage temperature	-25 °C...55 °C	Ambient temperature	-5 °C...40 °C
Continuous operating temp., min.	-60 °C	Continuous operating temp., max.	130 °C

## Environmental Product Compliance

RoHS Compliance Status	Compliant without exemption		
REACH SVHC	No SVHC above 0.1 wt%		
Product Carbon Footprint	Cradle to gate	0.107 kg CO2 eq.	

## Material data

Basic material	Steel	Colour	silver
UL 94 flammability rating	None		

## System specifications

Version	For a shield connection	End cover plate required	No
Mounting rail	Mounting plate		

## Additional technical data

Type of fixing	Snap-on	Installation advice	Direct mounting
Explosion-tested version	No	Type of mounting	Screw

## Conductors for clamping (rated connection)

Stripping length	22 mm	Type of connection	Spring connection
Number of connections	1	Cable diameter, max.	13.5 mm
Cable diameter, min.	4 mm	Connection cross-section, stranded, max.	13.5 mm <sup>2</sup>
Connection cross-section, stranded, min. 4 mm <sup>2</sup>			

## Dimensions

Length of thread	5.3 mm	Pitch in mm (P)	20.00 mm
------------------	--------	-----------------	----------

## General

Installation advice	Direct mounting	Mounting rail	Mounting plate
---------------------	-----------------	---------------	----------------

## Rating data

Rated cross-section	10 mm <sup>2</sup>
---------------------	--------------------

**KLBUE 4-13.5 SC**

**Weidmüller Interface GmbH & Co. KG**  
Klingenbergstraße 26  
D-32758 Detmold  
Germany

[www.weidmueller.com](http://www.weidmueller.com)

**Technical data**

**Classifications**

ETIM 8.0	EC002020	ETIM 9.0	EC002020
ETIM 10.0	EC002020	ECLASS 14.0	27-25-01-20
ECLASS 15.0	27-25-01-20		