

Part Number : [2001220010](#)

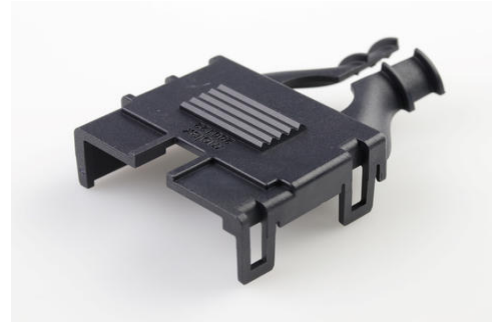
Product Description : Mega-Fit Receptacle Backshell, Dual Row, Low-Halogen, 10 Circuits

Series Number : 200122

Status : Active

Product Category : Connector Accessories

Engineering Part Number : F4068.05-P27



Documents and Resources

Drawings

[2001220010_sd.pdf](#)

3D Models and Design Files

[STEP AP242](#)

[SOLIDWORKS](#)

[Creo](#)

Specifications

[AS-76823-100-001.pdf](#)

Product Environment Compliance

Compliance

GADSL/IMDS	Not Relevant
China RoHS	Not Relevant
EU ELV	Not Relevant
Low-Halogen Status	Not Relevant
REACH SVHC	Not Contained per D(2025)7771-DC (04 Feb 2026)
EU RoHS	Compliant per EU 2015/863

[Compliance Statements](#)

- EU RoHS
- REACH SVHC
- Low-Halogen

[Industry Documents](#)

- IPC 1752A Class C
- IPC 1752A Class D
- Molex Product Compliance Declaration
- IEC-62474
- chemSHERPA (xml)

Substances of Interest

- PFAS

EU RoHS Certificate of Compliance

Additional Product Compliance Information

Part Details

General

Status	Active
Category	Connector Accessories
Series	200122
Description	Mega-Fit Receptacle Backshell, Dual Row, Low-Halogen, 10 Circuits
Component Type	Backshell
Product Name	Mega-Fit
UPC	889056290982

Physical

Circuits (Loaded)	10
Circuits (maximum)	10
Color - Resin	Black
Lock to Mating Part	Yes
Material - Resin	Nylon
Net Weight	3.820/g
Number of Rows	2
Packaging Type	Bag
Temperature Range - Operating	-40° to +105°C

Solder Process Data

Lead-Free Process Capability	N/A
------------------------------	-----

Mates With / Use With

Use with Part(s)

Description	Part Number
Mega-Fit Dual Row Receptacle Housings	<u>171692</u>

This document was generated on May 20, 2026